



Schola Europaea

Office of the Secretary-General

**Ref.: 2016-10-D-2-en-1**

**Orig.: FR**

## **Facts and figures on the beginning of the 2016-2017 school year in the European Schools**

---

**Board of Governors of the European Schools**

Meeting on 7, 8 and 9 December 2016 - Brussels

---

## INTRODUCTION

This document contains a number of facts and figures, as at **15 October 2016**, on the situation of the European Schools after the beginning of the 2016-2017 school year, in terms of pupil population, of choices of languages by pupils and of staff (seconded, locally recruited teachers and AAS).

These facts and figures will subsequently be incorporated into the Secretary-General's annual report, which will be presented to the Board of Governors in April 2017.

## I. DEVELOPMENT OF THE PUPIL POPULATION

### 1. Total pupil population

The table below shows pupil numbers for each school and the total numbers for the system as a whole, year on year, for the period *2013-2016* and the percentage variation year on year over the reference period. The last column shows the percentage variation in pupil numbers over the period as a whole.

As far as the European School, Brussels I is concerned, an additional line has been added in each table, in order to distinguish the Uccle site from the Berkendael one. The reason for this is that at its December 2015 meeting, the Board of Governors approved the decision on temporary use of the Berkendael as an extension to the European School, Brussels I pending the opening of the European School, Brussels V.

#### Pupil population from 2013 to 2016

Schools	2013		2014		2015		2016		Difference between 2013 and 2016	
	Population	%	Population	%	Population	%	Population	%	Population	%
Alicante	1042	-1,0%	1007	-3,4%	980	-2,7%	1010	3,1%	-32	-3,1%
Bergen	565	1,6%	552	-2,3%	537	-2,7%	526	-2,0%	-39	-6,9%
Brussels I (Uccle)	3083	1,4%	3278	6,3%	3394	3,5%	3344	-1,5%	261	8,5%
Brussels I (Berkendael)							154		154	
Brussels II	3078	-2,1%	2958	-3,9%	2998	1,4%	3056	1,9%	-22	-0,7%
Brussels III	2870	-0,8%	2906	1,3%	2989	2,9%	3041	1,7%	171	6,0%
Brussels IV	1932	26,3%	2263	17,1%	2498	10,4%	2703	8,2%	771	39,9%
Culham	600	-12,0%	537	-10,5%	459	-14,5%	390	-15,0%	-210	-35,0%
Frankfurt	1247	4,7%	1424	14,2%	1452	2,0%	1465	0,9%	218	17,5%
Karlsruhe	925	1,5%	863	-6,7%	813	-5,8%	837	3,0%	-88	-9,5%
Luxembourg I	2786	2,6%	2972	6,7%	3081	3,7%	3260	5,8%	474	17,0%
Luxembourg II	2101	6,9%	2243	6,8%	2348	4,7%	2531	7,8%	430	20,5%
Mol	738	-0,8%	723	-2,0%	722	-0,1%	740	2,5%	2	0,3%
Munich	2183	5,8%	2237	2,5%	2261	1,1%	2313	2,3%	130	6,0%
Varese	1397	0,9%	1422	1,8%	1371	-3,6%	1321	-3,6%	-76	-5,4%
<b>Total</b>	<b>24547</b>	<b>2,8%</b>	<b>25385</b>	<b>3,4%</b>	<b>25903</b>	<b>2,0%</b>	<b>26691</b>	<b>3,0%</b>	<b>2144</b>	<b>8,7%</b>

The total population of the European Schools on **15 October 2016** was **26,691** pupils, representing an average growth rate of **3%** compared with 2015, although this covers markedly different situations according to the Schools.

**67.7%** of the total pupil population is to be found in the Brussels (**46%**) and Luxembourg (**21.7%**) Schools.

On 4 September 2012, the European School, Luxembourg II moved into its new premises at Bertrange, a locality situated 7 kilometres to the west of the centre of the city of Luxembourg. It is located on a magnificent 14-hectare site, near another school, Lycée Josy Barthel.

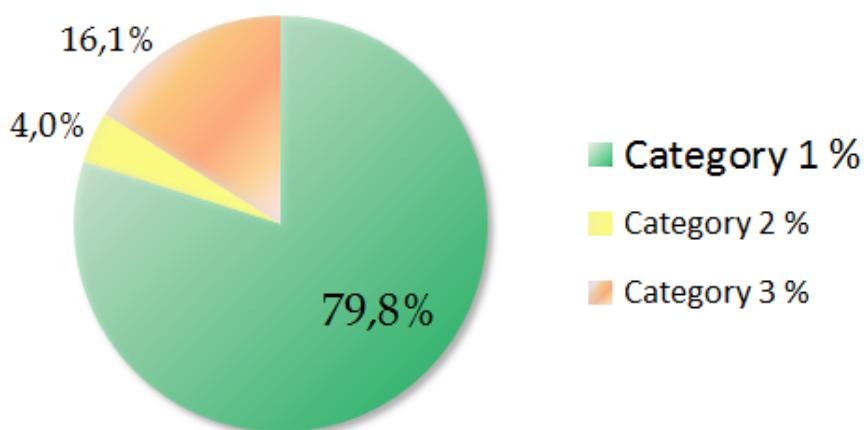
**2531 pupils** (nursery, primary and secondary) are on roll for the 2016-2017 school year.

An increase of **7.8%** in the number of pupils on roll at Luxembourg II **between 2015 and 2016** is to be noted.

The Berkendael site, which is being used temporarily as an extension to the European School, Brussels I pending the opening of the European School, Brussels V, has **154** pupils on roll.

The Brussels IV School, on its new site at Laeken, which opened in September 2012, has **2703** pupils on roll (i.e. up by **over 8%** on last year).

## 2. Pupil population by category



The three tables below show, for each year from 2013 to 2016, the number of pupils in the three categories and the percentage for which each category accounts in relation to the total number of pupils in each school. The last two columns in each of these tables give the variation, in absolute and percentage terms, in pupil numbers in the various categories in each school and in the system as a whole over the same period.

**Pupil population from 2013 to 2016: Category I population**

Schools	2013		2014		2015		2016		Difference between 2013 and 2016	
	Population	%	Population	%	Population	%	Population	%	Population	%
Alicante	606	58,2%	615	61,1%	624	63,7%	650	64,4%	44	7,3%
Bergen	123	21,8%	131	23,7%	124	23,1%	121	23,0%	-2	-1,6%
Brussels I (Uccle)	2843	92,2%	3116	95,1%	3275	97,4%	3236	96,8%	393	13,8%
Brussels I (Berkendael)							154	100,0%		
Brussels II	2910	94,5%	2814	95,1%	2872	95,8%	2944	96,3%	34	1,2%
Brussels III	2736	95,3%	2782	95,7%	2880	95,4%	2943	96,8%	207	7,6%
Brussels IV	1878	97,2%	2191	96,8%	2408	96,4%	2598	96,1%	720	38,3%
Culham	57	9,5%	43	8,0%	36	7,8%	30	7,7%	-27	-47,4%
Frankfurt	903	72,4%	1118	78,5%	1196	82,4%	1241	84,7%	338	37,4%
Karlsruhe	180	19,5%	186	21,6%	167	20,5%	172	20,5%	-8	-4,4%
Luxembourg I	2352	84,4%	2461	82,8%	2510	81,5%	2640	81,0%	288	12,2%
Luxembourg II	1526	72,6%	1614	72,0%	1668	71,0%	1750	69,1%	224	14,7%
Mol	154	20,9%	163	22,5%	157	21,7%	157	21,2%	3	1,9%
Munich	1705	78,1%	1768	79,0%	1815	80,3%	1882	81,4%	177	10,4%
Varese	791	56,6%	821	57,7%	798	58,2%	792	60,0%	1	0,1%
<b>Total</b>	<b>18764</b>	<b>76,4%</b>	<b>19823</b>	<b>78,1%</b>	<b>20530</b>	<b>79,3%</b>	<b>21310</b>	<b>79,8%</b>	<b>2546</b>	<b>13,6%</b>

Category I pupils are mainly children of officials and contract staff (at least one year) of the EU institutions and of the staff of the European Schools, and of the European Patent Office in the case of Munich. The percentage of pupils belonging to Category I has been steadily increasing in recent years and this category now accounts for **almost 80%** of the pupil population of the system as a whole.

The Brussels and Luxembourg Schools, where there are large numbers of EU officials and the inadequacy of the infrastructure requires a restrictive enrolment policy to be enforced for Categories II and III pupils, have a high percentage of Category I pupils – **over 90% in the four Brussels Schools** (100% for Berkendael) whereas the schools located in places where the number of EU officials is small have a far lower percentage of such pupils.

At Varese, **60%** of the pupils are Category I pupils, while at Munich pupils belonging to this category, the vast majority of whom are children of staff of the European Patent Office, account for **over 81%** of the pupil population.

In the two newer schools outside the Brussels/Luxembourg region – Alicante and Frankfurt – the increase in the percentage of this category of pupil has continued, with Frankfurt now having reached **84.7%**.

**Pupil population from 2013 to 2016: Category II population**

Schools	2013		2014		2015		2016		Difference between 2013 and 2016	
	Population	%	Population	%	Population	%	Population	%	Population	%
Alicante	1	0,1%	0	0,0%	0	0,0%	2	0,2%	1	100,0%
Bergen	1	0,2%	1	0,2%	0	0,0%	0	0,0%	-1	-100,0%
Brussels I (Uccle)	43	1,4%	39	1,2%	36	1,1%	32	1,0%	-11	-25,6%
Brussels I (Berkendael)										
Brussels II	81	2,6%	67	2,3%	62	2,1%	50	1,6%	-31	-38,3%
Brussels III	44	1,5%	38	1,3%	38	1,3%	35	1,2%	-9	-20,5%
Brussels IV	27	1,4%	30	1,3%	40	1,6%	45	1,7%	18	66,7%
Culham	27	4,5%	25	4,7%	21	4,6%	18	4,6%	-9	-33,3%
Frankfurt	109	8,7%	89	6,3%	77	5,3%	73	5,0%	-36	-33,0%
Karlsruhe	247	26,7%	216	25,0%	188	23,1%	195	23,3%	-52	-21,1%
Luxembourg I	82	2,9%	91	3,1%	87	2,8%	100	3,1%	18	22,0%
Luxembourg II	188	9,0%	200	8,9%	193	8,2%	216	8,5%	28	14,9%
Mol	11	1,5%	8	1,1%	4	0,6%	5	0,7%	-6	-54,5%
Munich	139	6,4%	150	6,7%	154	6,8%	148	6,4%	9	6,5%
Varese	174	12,5%	185	13,0%	185	13,5%	158	12,0%	-16	-9,2%
<b>Total</b>	<b>1174</b>	<b>4,8%</b>	<b>1139</b>	<b>4,5%</b>	<b>1085</b>	<b>4,2%</b>	<b>1077</b>	<b>4,0%</b>	<b>-97</b>	<b>-8,3%</b>

Category II pupils are admitted under the terms of agreements entered into between the Schools and certain organisations and companies. By virtue of these agreements, a fee is paid for each pupil thus admitted which is equivalent to the actual cost to the school's budget of the education provided.

This category of pupils currently accounts for **4%** of the total pupil population.

Category II pupils account for **23.3%** of the pupil population of the Karlsruhe School and **12%** of that of Varese.

**Pupil population from 2013 to 2016: Category III population**

Schools	2013		2014		2015		2016		Difference between 2013 and 2016	
	Population	%	Population	%	Population	%	Population	%	Population	%
Alicante	435	41,8%	392	38,9%	356	36,3%	358	35,4%	-116	-24,5%
Bergen	441	78,1%	420	76,1%	413	76,9%	405	77,0%	-42	-9,4%
Brussels I (Uccle)	197	6,4%	123	3,8%	83	2,4%	76	2,3%	-105	-58,0%
Brussels I (Berkendael)										
Brussels II	87	2,8%	77	2,6%	64	2,1%	62	2,0%	-42	-40,4%
Brussels III	90	3,1%	86	3,0%	71	2,4%	63	2,1%	-32	-33,7%
Brussels IV	27	1,4%	42	1,9%	50	2,0%	60	2,2%	38	172,7%
Culham	516	86,0%	469	87,3%	402	87,6%	342	87,6%	-236	-40,8%
Frankfurt	235	18,9%	217	15,2%	179	12,3%	151	10,3%	-109	-41,9%
Karlsruhe	498	53,8%	461	53,4%	458	56,3%	470	56,2%	-14	-2,9%
Luxembourg I	352	12,6%	420	14,1%	484	15,7%	520	16,0%	206	65,6%
Luxembourg II	387	18,4%	429	19,1%	487	20,7%	565	22,3%	213	60,5%
Mol	573	77,6%	552	76,4%	561	77,7%	578	78,1%	-15	-2,5%
Munich	339	15,5%	319	14,3%	292	12,9%	283	12,2%	-46	-14,0%
Varese	432	30,9%	416	29,3%	388	28,3%	371	28,1%	-91	-19,7%
<b>Total</b>	<b>4609</b>	<b>18,8%</b>	<b>4423</b>	<b>17,4%</b>	<b>4288</b>	<b>16,6%</b>	<b>4304</b>	<b>16,1%</b>	<b>-391</b>	<b>-8,3%</b>

Category III pupils are pupils whose parents are required to pay school fees.

They currently account for **16.1%** of the pupils of the European Schools.

### 3. Pupil population by nationality

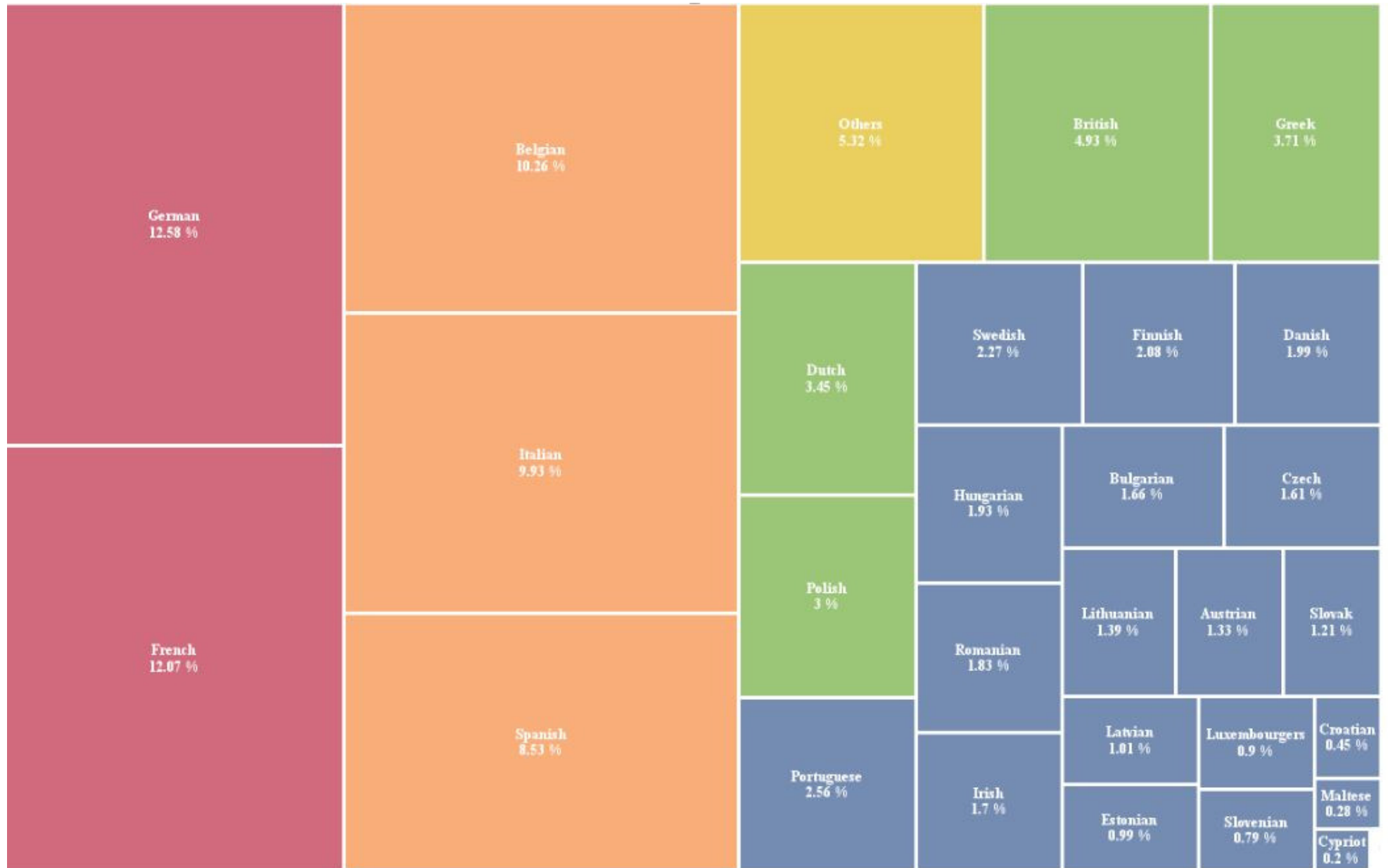
The table below shows the numbers of pupils coming from each of the Member States and the percentage of total pupil numbers accounted for by pupils from each Member State. It should be noted that details of those pupils who are national of countries other than the Member States are not given, although the number and percentage of such pupils are indicated at the bottom of the table. Hence, the total numbers correspond to the figures shown in the previous tables.

**It should be noted that the figures in this table are not 'round numbers'. A large number of pupils enrolled in the European Schools have more than one nationality. Pupils with dual nationality or more are calculated as shares: dual nationality as 0.5+0.5, triple nationality as 0.33+0.33+0.33).**

#### **Pupil population by nationality** **Member States of the European Union**

**Total number of nationalities: 120**

<b>Nationality</b>	<b>Population</b>	<b>%</b>
<b>Austrian</b>	354	1,3%
<b>Belgian</b>	2737,25	10,3%
<b>British</b>	1314,67	4,9%
<b>Bulgarian</b>	442,83	1,7%
<b>Croatian</b>	121,17	0,5%
<b>Cypriot</b>	52,17	0,2%
<b>Czech</b>	431	1,6%
<b>Danish</b>	531,5	2,0%
<b>Dutch</b>	920,67	3,4%
<b>Estonian</b>	264	1,0%
<b>Finnish</b>	554,42	2,1%
<b>French</b>	3222,08	12,1%
<b>German</b>	3358,17	12,6%
<b>Greek</b>	989,83	3,7%
<b>Hungarian</b>	515,08	1,9%
<b>Irish</b>	452,5	1,7%
<b>Italian</b>	2650,75	9,9%
<b>Latvian</b>	270,33	1,0%
<b>Lithuanian</b>	372,17	1,4%
<b>Luxembourg</b>	241,25	0,9%
<b>Maltese</b>	74,75	0,3%
<b>Polish</b>	800,92	3,0%
<b>Portuguese</b>	684	2,6%
<b>Romanian</b>	488,17	1,8%
<b>Slovakian</b>	323	1,2%
<b>Slovenian</b>	210,33	0,8%
<b>Spanish</b>	2275,58	8,5%
<b>Swedish</b>	607,17	2,3%
<b>OTHERS</b>	1431,25	5,4%
<b>TOTAL</b>	<b>26691</b>	<b>100,0%</b>





**Pupil population by nationality and by school**  
**Member States of the European Union – 2016-2017**

	Alicante	Bergen	Brussels I (Uccle)	Brussels I (Berkendael)	Brussels II	Brussels III	Brussels IV	Culham	Frankfurt	Karlsruhe	Luxembourg I	Luxembourg II	Mol	Munich	Varese	TOTAL
<b>Austrian</b>	2,5	0,5	47,17	0,5	54	60,5	54,17	1	13,17	8	21,83	18,5	5,5	47,67	19	<b>354</b>
<b>Belgian</b>	39,5	19	396,5	34,17	378,83	417,67	686,33	11	42,83	4,33	214,58	149,67	224,83	54,5	63,5	<b>2735,25</b>
<b>British</b>	61,17	29,5	111,17	1,83	94,58	135,75	110,08	148	100,67	43,67	156,67	102,83	29,33	97,58	91,83	<b>1314,67</b>
<b>Bulgarian</b>	9,5	0	35,83	4,5	19,33	16	147,5	2	18,5	6,5	134,67	6,5	8	17,5	16,5	<b>442,83</b>
<b>Croatian</b>	0,33	0,5	10,17	0	0	1,83	58,5	0	2,5	2	5,5	35	0	1,33	3,5	<b>121,17</b>
<b>Cyprus</b>	0	0	0,5	1	4	31,83	3	0	1	2	1	3,83	2	1,5	0,5	<b>52,17</b>
<b>Czech</b>	6,5	4,5	11,83	0,5	10	233,67	20,92	0,5	7	7	6,75	97,33	7,5	7,5	9,5	<b>431</b>
<b>Danish</b>	10	4	226,83	0,5	9	9	11,17	9,33	14	8	21,83	173	5	24,83	5,5	<b>531,5</b>
<b>Dutch</b>	30,5	181,5	26,17	0	79,17	104,5	38,67	7,5	41,5	14,5	142,5	10,83	99,5	86,83	57	<b>920,67</b>
<b>Estonian</b>	2,5	0	5,5	0,5	148,5	0,5	17	0	3,5	0	78	1,5	0,5	5,5	0,5	<b>264</b>
<b>Finnish</b>	4,50	4,5	12,33	0,5	307,5	5,5	8,5	1	15,5	3	154,17	5,5	4,5	17,92	9,5	<b>554,42</b>
<b>French</b>	79,33	58,83	448	38	217,92	340,92	364,75	90	115,5	91,83	454,75	428,33	71,17	314,75	108	<b>3222,08</b>
<b>German</b>	95,5	28,83	267,5	17,17	224,67	262,83	217,92	65,5	417,33	379,33	258,08	157,17	28	802,17	136,17	<b>3358,17</b>
<b>Greek</b>	12,5	10,5	30,5	2,5	17,5	483,5	34,5	0	39,5	13	26	181,5	10,5	86,33	41,5	<b>989,83</b>
<b>Hungarian</b>	8,5	4	242,67	2	20,33	22,58	12	1	22,5	11	14	112	3	19	20,5	<b>515,08</b>
<b>Irish</b>	17,17	6,5	50,83	0	40,5	71,5	73,5	2	44,83	5	40,83	28,33	16,5	34,17	20,83	<b>452,5</b>
<b>Italian</b>	34,33	24,33	383	8,33	311,17	77,42	313,67	20	195,17	25	110,75	396,92	28,5	281,33	440,83	<b>2650,75</b>
<b>Latvian</b>	3,5	0	4	0	150	6,5	7	0	10,67	2	79,17	1,5	0	3,5	2,5	<b>270,33</b>
<b>Lithuanian</b>	6,5	4	3,5	1	185,5	3,5	5	0	12,5	0	128,67	4	1	5	12	<b>372,17</b>
<b>Luxembourg</b>	4	0	4,5	1	9,83	4,5	6	0	3,5	0,5	92,58	106,33	0	8	0,5	<b>241,25</b>
<b>Maltese</b>	0	0	44	0	4	1	1	0	1,5	0	10,25	11	0	0	2	<b>74,75</b>
<b>Polish</b>	15,5	5	371,67	5,67	35,33	25,67	33,58	3	34,83	4	193,17	19,83	8	27,17	18,5	<b>800,92</b>
<b>Portuguese</b>	10	9	11,17	0,5	286,67	23,83	18	4,5	54,17	2	198,17	21	1	22,5	21,5	<b>684</b>
<b>Romanian</b>	3	4	36,33	11	17,67	11	233,67	1,5	5,33	11	14,33	93,5	2,5	30,33	13	<b>488,17</b>
<b>Slovakian</b>	9	5	3	5,5	3,5	187,67	3,5	0	11	0	10	62,5	3	11,33	8	<b>323</b>
<b>Slovenian</b>	0	5	84,17	1,5	3,5	3,33	8	0	13,5	0,33	8,5	77	0	4,5	1	<b>210,33</b>
<b>Spanish</b>	497,17	27	359,5	8	65,5	423,83	99,33	8	148,33	20,83	333,08	38,83	21,5	156,67	68	<b>2275,57</b>
<b>Swedish</b>	9,5	3,5	28,5	0	278,75	11,83	17	2,5	16	3,33	173,83	5,08	10,5	29,83	17	<b>607,17</b>
<b>OTHERS</b>	37,5	86,5	87,17	7,83	78,75	62,83	98,75	11,67	58,67	168,83	176,33	181,67	148,67	113,75	112,33	<b>1431,25</b>
<b>TOTAL</b>	<b>1010</b>	<b>526</b>	<b>3344</b>	<b>154</b>	<b>3056</b>	<b>3041</b>	<b>2703</b>	<b>390</b>	<b>1465</b>	<b>837</b>	<b>3260</b>	<b>2531</b>	<b>740</b>	<b>2313</b>	<b>1321</b>	<b>26691</b>

## 4. Pupil population by teaching level

### Population by teaching level from 2013 to 2016

Schools	Cycle	2013		2014		2015		2016		Difference between 2013 and 2016	
		Population	%	Population	%	Population	%	Population	%	Population	%
Alicante	Nursery	117	0,0%	102	-12,8%	96	-5,9%	106	10,4%	-11	-9,4%
	Primary	370	-3,4%	369	-0,3%	363	-1,6%	369	1,7%	-1	-0,3%
	Secondary	555	0,5%	536	-3,4%	521	-2,8%	535	2,7%	-20	-3,6%
<b>Total Alicante</b>		<b>1042</b>	<b>-1,0%</b>	<b>1007</b>	<b>-3,4%</b>	<b>980</b>	<b>-2,7%</b>	<b>1010</b>	<b>3,1%</b>	<b>-32</b>	<b>-3,1%</b>
Bergen	Nursery	46	21,1%	54	17,4%	51	-5,6%	45	-11,8%	-1	-2,2%
	Primary	210	2,4%	192	-8,6%	175	-8,9%	179	2,3%	-31	-14,8%
	Secondary	309	-1,3%	306	-1,0%	311	1,6%	302	-2,9%	-7	-2,3%
<b>Total Bergen</b>		<b>565</b>	<b>1,6%</b>	<b>552</b>	<b>-2,3%</b>	<b>537</b>	<b>-2,7%</b>	<b>526</b>	<b>-2,0%</b>	<b>-39</b>	<b>-6,9%</b>
Brussels I (Uccle)	Nursery	276	15,5%	339	22,8%	343	1,2%	243	-29,2%	-33	-12,0%
	Primary	1083	9,1%	1184	9,3%	1228	3,7%	1255	2,2%	172	15,9%
	Secondary	1724	-4,6%	1755	1,8%	1823	3,9%	1846	1,3%	122	7,1%
<b>Total Brussels I (Uccle)</b>		<b>3083</b>	<b>1,4%</b>	<b>3278</b>	<b>6,3%</b>	<b>3394</b>	<b>3,5%</b>	<b>3344</b>	<b>-1,5%</b>	<b>261</b>	<b>8,5%</b>
Brussels I (Berkendael)	Nursery							75			
	Primary							79			
<b>Total Brussels I (Berkendael)</b>								<b>154</b>			
Brussels II	Nursery	261	-7,4%	268	2,7%	291	8,6%	293	0,7%	32	12,3%
	Primary	1097	-2,7%	1035	-5,7%	1090	5,3%	1098	0,7%	1	0,1%
	Secondary	1720	-0,9%	1655	-3,8%	1617	-2,3%	1665	3,0%	-55	-3,2%
<b>Total Brussels II</b>		<b>3078</b>	<b>-2,1%</b>	<b>2958</b>	<b>-3,9%</b>	<b>2998</b>	<b>1,4%</b>	<b>3056</b>	<b>1,9%</b>	<b>-22</b>	<b>-0,7%</b>
Brussels III	Nursery	293	3,5%	297	1,4%	317	6,7%	314	-0,9%	21	7,2%
	Primary	964	1,8%	1025	6,3%	1077	5,1%	1104	2,5%	140	14,5%
	Secondary	1613	-2,9%	1584	-1,8%	1595	0,7%	1623	1,8%	10	0,6%
<b>Total Brussels III</b>		<b>2870</b>	<b>-0,8%</b>	<b>2906</b>	<b>1,3%</b>	<b>2989</b>	<b>2,9%</b>	<b>3041</b>	<b>1,7%</b>	<b>171</b>	<b>6,0%</b>
Brussels IV	Nursery	264	8,2%	297	12,5%	281	-5,4%	248	-11,7%	-16	-6,1%
	Primary	965	11,4%	1015	5,2%	1063	4,7%	1116	5,0%	151	15,6%
	Secondary	703	67,4%	951	35,3%	1154	21,3%	1339	16,0%	636	90,5%
<b>Total Brussels IV</b>		<b>1932</b>	<b>26,3%</b>	<b>2263</b>	<b>17,1%</b>	<b>2498</b>	<b>10,4%</b>	<b>2703</b>	<b>8,2%</b>	<b>771</b>	<b>39,9%</b>
Culham	Primary	182	-24,8%	132	-27,5%	62	-53,0%				
	Secondary	418	-5,0%	405	-3,1%	397	-2,0%	390	-1,8%	-28	-6,7%
<b>Total Culham</b>		<b>600</b>	<b>-12,0%</b>	<b>537</b>	<b>-10,5%</b>	<b>459</b>	<b>-14,5%</b>	<b>390</b>	<b>-15,0%</b>	<b>-210</b>	<b>-35,0%</b>
Frankfurt	Nursery	160	-3,0%	183	14,4%	168	-8,2%	159	-5,4%	-1	-0,6%
	Primary	506	9,8%	585	15,6%	621	6,2%	615	-1,0%	109	21,5%
	Secondary	581	2,8%	656	12,9%	663	1,1%	691	4,2%	110	18,9%
<b>Total Frankfurt</b>		<b>1247</b>	<b>104,7%</b>	<b>1424</b>	<b>14,2%</b>	<b>1452</b>	<b>2,0%</b>	<b>1465</b>	<b>0,9%</b>	<b>218</b>	<b>17,5%</b>
Karlsruhe	Nursery	92	3,4%	77	-16,3%	77	0,0%	89	15,6%	-3	-3,3%
	Primary	311	3,3%	299	-3,9%	298	-0,3%	321	7,7%	10	3,2%
	Secondary	522	0,2%	487	-6,7%	438	-10,1%	427	-2,5%	-95	-18,2%
<b>Total Karlsruhe</b>		<b>925</b>	<b>1,5%</b>	<b>863</b>	<b>-6,7%</b>	<b>813</b>	<b>-5,8%</b>	<b>837</b>	<b>3,0%</b>	<b>-88</b>	<b>-9,5%</b>
Luxemb. I	Nursery	382	-7,5%	448	17,3%	461	2,9%	444	-3,7%	62	16,2%
	Primary	1042	9,8%	1138	9,2%	1226	7,7%	1320	7,7%	278	26,7%
	Secondary	1362	0,7%	1386	1,8%	1394	0,6%	1496	7,3%	134	9,8%
<b>Total Luxembourg I</b>		<b>2786</b>	<b>2,6%</b>	<b>2972</b>	<b>6,7%</b>	<b>3081</b>	<b>3,7%</b>	<b>3260</b>	<b>5,8%</b>	<b>474</b>	<b>17,0%</b>
Luxemb. II	Nursery	270	13,4%	299	10,7%	307	2,7%	299	-2,6%	29	10,7%
	Primary	773	9,2%	842	8,9%	916	8,8%	1023	11,7%	250	32,3%
	Secondary	1058	3,8%	1102	4,2%	1125	2,1%	1209	7,5%	151	14,3%
<b>Total Luxembourg II</b>		<b>2101</b>	<b>6,9%</b>	<b>2243</b>	<b>6,8%</b>	<b>2348</b>	<b>4,7%</b>	<b>2531</b>	<b>7,8%</b>	<b>430</b>	<b>20,5%</b>
Mol	Nursery	76	22,6%	77	1,3%	77	0,0%	76	-1,3%	0	0,0%
	Primary	245	-2,8%	222	-9,4%	243	9,5%	249	2,5%	4	1,6%
	Secondary	417	-3,0%	424	1,7%	402	-5,2%	415	3,2%	-2	-0,5%
<b>Total Mol</b>		<b>738</b>	<b>-8,0%</b>	<b>723</b>	<b>-2,0%</b>	<b>722</b>	<b>-0,1%</b>	<b>740</b>	<b>2,5%</b>	<b>2</b>	<b>0,3%</b>
Munich	Nursery	136	7,9%	143	5,1%	131	-8,4%	139	6,1%	3	2,2%
	Primary	929	11,4%	913	-1,7%	894	-2,1%	896	0,2%	-33	-3,6%
	Secondary	1118	7,2%	1181	5,6%	1236	4,7%	1278	3,4%	160	14,3%
<b>Total Munich</b>		<b>2183</b>	<b>5,8%</b>	<b>2237</b>	<b>2,5%</b>	<b>2261</b>	<b>1,1%</b>	<b>2313</b>	<b>2,3%</b>	<b>130</b>	<b>6,0%</b>
Varese	Maternel	113	10,8%	119	5,3%	110	-7,6%	103	-6,4%	-10	-8,8%
	Primaire	515	2,6%	527	2,3%	492	-6,6%	491	-0,2%	-24	-4,7%
	Secondaire	769	3,2%	776	0,9%	769	-0,9%	727	-5,5%	-42	-5,5%
<b>Total Varese</b>		<b>1397</b>	<b>0,9%</b>	<b>1422</b>	<b>1,8%</b>	<b>1371</b>	<b>-3,6%</b>	<b>1321</b>	<b>-3,6%</b>	<b>-76</b>	<b>-5,4%</b>
<b>Total</b>	Nursery	<b>2486</b>	<b>3,3%</b>	<b>2703</b>	<b>8,7%</b>	<b>2710</b>	<b>0,3%</b>	<b>2633</b>	<b>-2,8%</b>	<b>147</b>	<b>5,9%</b>
	Primary	<b>9192</b>	<b>3,8%</b>	<b>9478</b>	<b>3,1%</b>	<b>9748</b>	<b>2,8%</b>	<b>10115</b>	<b>3,8%</b>	<b>923</b>	<b>10,0%</b>
	Secondary	<b>12869</b>	<b>2,1%</b>	<b>13204</b>	<b>2,6%</b>	<b>13445</b>	<b>1,8%</b>	<b>13943</b>	<b>3,7%</b>	<b>1074</b>	<b>8,3%</b>
<b>TOTAL</b>		<b>24547</b>	<b>2,8%</b>	<b>25385</b>	<b>3,4%</b>	<b>25903</b>	<b>2,0%</b>	<b>26691</b>	<b>3,0%</b>	<b>2144</b>	<b>8,7%</b>

The table above shows, for each year under review, the number of pupils at each teaching level (Nursery, Primary and Secondary) in each school and in the system as a whole, as well as the percentage variation year on year since 2013.

The last two columns show the differences, in absolute and percentage terms, recorded for each teaching level in each school and in the system as a whole for the period since 2013.

## 5. Pupil population by language section

The table below shows the population of each of the language sections in each of the schools for the current school year.

### Language sections – 2016-2017 school year

Schools	Language section																		Total	
	BG	CS	DA	DE	EL	EN	ES	ET	FI	FR	HU	IT	LT	NL	PL	PT	RO	SK		SV
Alicante				161		292	366			191										1.010
Bergen						240				99				187						526
Brussels I (Uccle)			254	301		463	341			1.064	239	317			365					3.344
Brussels I (Berkendael)				24						125								5		154
Brussels II				283		408			336	743		256	131	230		310			359	3.056
Brussels III		238		315	525	409	422			853				279						3.041
Brussels IV	45			295		556		5		1.238		240		228			96			2.703
Culham				87		162				141										390
Frankfurt				517		562				193		193								1.465
Karlsruhe				376		304				157										837
Luxembourg I				377		586	374	166		899				249	200	201			208	3.260
Luxembourg II		71	200	276	197	528				839	63	357								2.531
Mol				42		320				136				242						740
Munich				1.091	49	299	114			396		259		105						2.313
Varese				196		417				200		417		91						1.321
<b>Total</b>	<b>45</b>	<b>309</b>	<b>454</b>	<b>4.341</b>	<b>771</b>	<b>5.546</b>	<b>1.617</b>	<b>5</b>	<b>502</b>	<b>7.274</b>	<b>302</b>	<b>2.039</b>	<b>131</b>	<b>1.611</b>	<b>565</b>	<b>511</b>	<b>96</b>	<b>5</b>	<b>567</b>	<b>26.691</b>

Broadly speaking, pupil numbers in the different language sections reflect the size of the population in question in Europe, but clearly the languages of those countries which are host countries to the schools and the EU institutions are particularly well represented in the schools.

The concentration of the institutions in cities (Brussels and Luxembourg) which are largely Francophone is reflected in the size of the Francophone sections. All the schools have a Francophone section and an Anglophone and a German section, with the exception, in the case of the latter, of Bergen.

The Anglophone sections have the highest percentage of SWALS.

The Slovakian language section, which is intended in the long term to comprise complete nursery and primary cycles, has been open at the European School, Brussels I – Berkendael Site since 1 September 2016, starting with the nursery cycle. It has five pupils on roll.

The Estonian language section, which is intended in the long term to comprise complete nursery, primary and secondary cycle, has been open at the European School, Brussels IV since 1 September 2016, starting with the nursery cycle.

## SWALS (Students Without A Language Section)

SWALS are those Categories I and II pupils whose mother tongue/dominant language is an official language of an EU Member State (with the exception of Irish and Maltese) but for whom no language section in their mother tongue/dominant language (L1) exists in their school.

If one of the language sections of the European Schools corresponding to a Category I or II pupil's mother tongue/dominant language is not open in the school, this pupil is entitled to tuition in his/her L1, working on the assumption that the School has at its disposal a duly qualified teacher, or can recruit one.

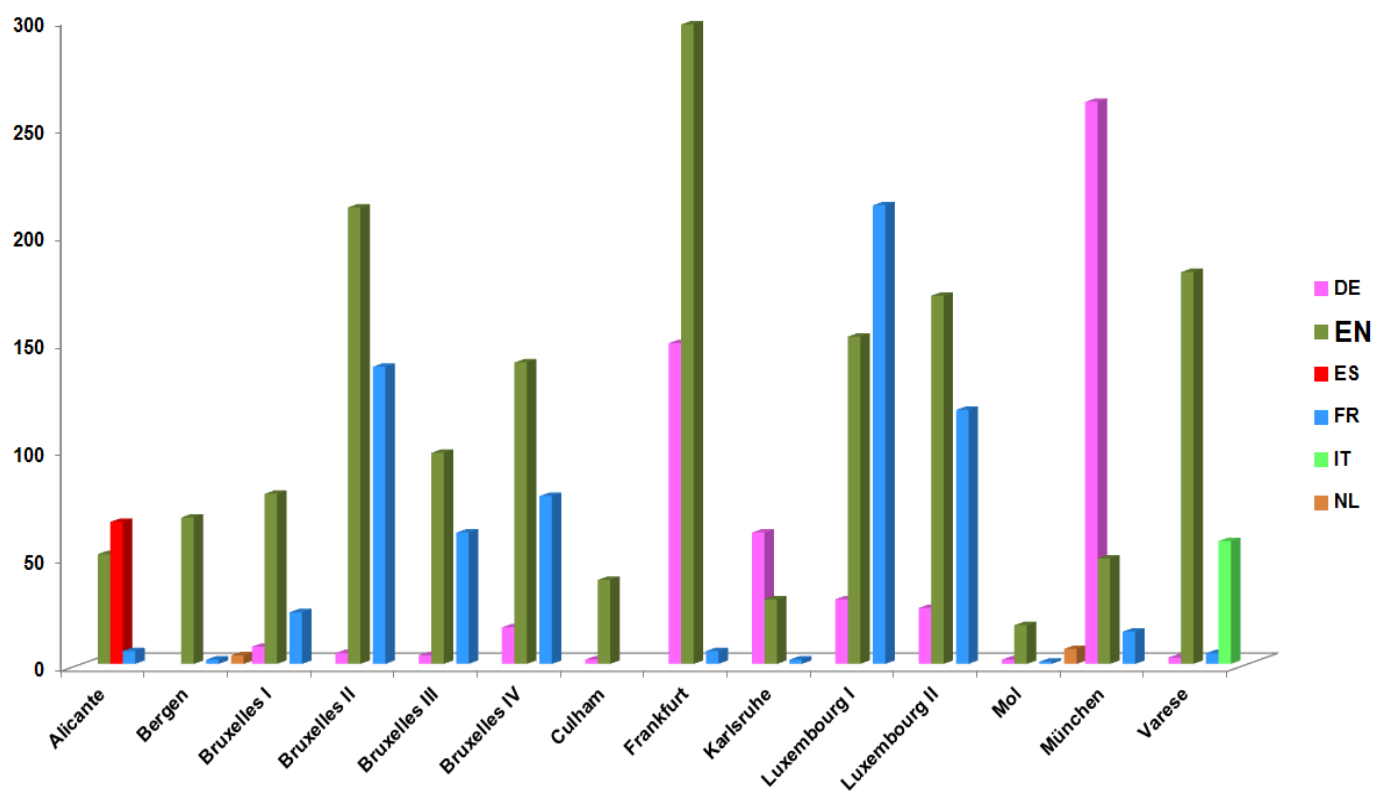
SWALS are normally enrolled in one of the working language (DE, EN, FR) sections. The language of the section is the pupil's L2. SWALS can also be enrolled in the language section of the host country on condition that no additional costs are created. Their L2 must be English, French or German.

SWALS are entitled to receive educational support when lack of knowledge of the language of the section in which they are enrolled is a barrier to communication, integration and learning. This support focuses on the acquisition of this language and thus facilitates SWALS' access to the curriculum.

Since 1 September 2011, Category III pupils have learned as L1 the language of the section in which they are enrolled. Category III pupils who were enrolled before 1 September 2011 and who learned as L1 a language different from that of the section can continue with the same L1 up to the end of their schooling in order to ensure pedagogical continuity.

Schools	Language of the L1 course																				
	BG	CS	DA	DE	EL	ES	ET	FI	HR	HU	IT	LT	LV	NL	PL	PT	RO	SK	SL	SV	TOTAL
<b>Alicante</b>			4		12	1	5	2		6	27	2		31	11	7		5		10	<b>123</b>
<b>Bergen</b>		3	1	13	1	17				5	13	4			3	1	2	2	5	4	<b>74</b>
<b>Brussels I</b>	17								2								3		89		<b>111</b>
<b>Brussels II</b>							154					49	152								<b>355</b>
<b>Brussels III</b>		6																157			<b>163</b>
<b>Brussels IV</b>	72						13		50								100				<b>235</b>
<b>Culham</b>			10			3					13			11		4					<b>41</b>
<b>Frankfurt</b>	20	7	10		35	148	3	9	3	21		10	7	58	25	50	4	7	12	23	<b>452</b>
<b>Karlsruhe</b>	3	6	8		12	19		4		10	10		1		6	7	2			5	<b>93</b>
<b>Luxembourg I</b>	119						73					131	72								<b>395</b>
<b>Luxembourg II</b>		30							30	36							80	61	78		<b>315</b>
<b>Mol</b>			2		3	6		2		1	7				2	1				4	<b>28</b>
<b>Münich</b>	9	8	15		67	87	3	11		13	5	1		2	20	24	13	9	5	33	<b>325</b>
<b>Varese</b>	16	8	5		33	65		14		17		9		19	26	10	7	1	17		<b>247</b>
<b>Total</b>	<b>256</b>	<b>68</b>	<b>55</b>	<b>13</b>	<b>163</b>	<b>346</b>	<b>251</b>	<b>42</b>	<b>85</b>	<b>109</b>	<b>75</b>	<b>206</b>	<b>232</b>	<b>102</b>	<b>86</b>	<b>120</b>	<b>214</b>	<b>248</b>	<b>190</b>	<b>96</b>	<b>2957</b>

Language section							
Schools	DE	EN	ES	FR	IT	NL	TOTAL
Alicante		51	66	6			123
Bergen		68		2		4	74
Brussels I	8	79		24			111
Brussels II	5	212		138			355
Brussels III	4	98		61			163
Brussels IV	17	140		78			235
Culham	2	39					41
Frankfurt	149	297		6			452
Karlsruhe	61	30		2			93
Luxembourg I	30	152		213			395
Luxembourg II	26	171		118			315
Mol	2	18		1		7	28
München	261	49		15			325
Varese	3	182		5	57		247
<b>TOTAL</b>	<b>568</b>	<b>1586</b>	<b>66</b>	<b>669</b>	<b>57</b>	<b>11</b>	<b>2957</b>



## Pupil population by language section, category and cycle for the 2016-2017 school year

This table shows the population of each language section in each school, broken down by pupil categories and by cycle, namely nursery, primary and secondary

Schools	Language section Cycle	Category	bg			cs			da			de			el			en			es			et			fi			fr			hu			it			lt			nl			pl			pt			ro			sk			sv			Total:
			1	2	3	1	2	3	1	2	3	1	2	3	1	2	3	1	2	3	1	2	3	1	2	3	1	2	3	1	2	3	1	2	3	1	2	3	1	2	3	1	2	3	1	2	3													
Alicante	nursery								15	7					27	3	27	12			14	1																													106									
	primary								39	29					60	38	72	48			72	1	10																												369									
	secondary								38	33					86	78	141	66			59	34																										535												
	<b>Total:</b>								<b>92</b>	<b>69</b>					<b>173</b>	<b>119</b>	<b>240</b>	<b>126</b>			<b>145</b>	<b>2</b>	<b>44</b>																									<b>1.010</b>												
Bergen	nursery														7	15					2	5														1	15											45												
	primary														38	54					8	25														10	44											179												
	secondary														38	88					5	54														12	105											302												
	<b>Total:</b>														<b>83</b>	<b>157</b>					<b>15</b>	<b>84</b>											<b>23</b>	<b>164</b>											<b>526</b>															
Brussels I (Uccle)	nursery								22	20					28		28				63		27																33									243												
	primary								85	107	1	1			145	1	106	1	1		383	4	2	108	1	110	4	4											190	1								1.255												
	secondary								142	5	161	2	9		277	4	8	202	3		584	7	21	102	1	157	7	13											135	6								1.846												
	<b>Total:</b>								<b>249</b>	<b>5</b>	<b>288</b>	<b>3</b>	<b>10</b>		<b>450</b>	<b>5</b>	<b>8</b>	<b>336</b>	<b>1</b>	<b>4</b>	<b>1.030</b>	<b>11</b>	<b>23</b>	<b>237</b>	<b>2</b>	<b>288</b>	<b>12</b>	<b>17</b>								<b>358</b>	<b>7</b>								<b>3.344</b>															
Brussels I (Berkendael)	nursery																																															5			75									
	primary																																																		79									
	<b>Total:</b>								<b>24</b>												<b>125</b>																								<b>5</b>			<b>154</b>												
Brussels II	nursery								29						54						27	51	1				25			21	17								34						34			293												
	primary								91	3	2				141	4					113	272	1	4			74	4	2	90	62								103	1					130	1		1.098												
	secondary								152	2	4				190	11	8				192	2	2	389	14	11				137	5	9	20	139	6	6						167	5					190	2	2	1.665									
	<b>Total:</b>								<b>272</b>	<b>5</b>	<b>6</b>				<b>385</b>	<b>11</b>	<b>12</b>				<b>332</b>	<b>2</b>	<b>2</b>	<b>712</b>	<b>15</b>	<b>16</b>				<b>236</b>	<b>9</b>	<b>11</b>	<b>131</b>	<b>218</b>	<b>6</b>	<b>6</b>			<b>304</b>	<b>6</b>					<b>354</b>	<b>2</b>	<b>3</b>	<b>3.056</b>												
Brussels III	nursery								42						24		53	2	51		1	50																	19												314									
	primary								120						121	1	190	7	141	1	3	143	1																92	3	2										1.104									
	secondary								76						165	2	2	259	4	10	197	2	13	224	1	3													157	2	4										1.623									
	<b>Total:</b>								<b>238</b>						<b>310</b>	<b>3</b>	<b>2</b>	<b>502</b>	<b>4</b>	<b>19</b>	<b>389</b>	<b>3</b>	<b>17</b>	<b>417</b>	<b>1</b>	<b>4</b>										<b>268</b>	<b>5</b>	<b>6</b>										<b>3.041</b>												
Brussels IV	nursery								10						38												15															20	1								248									
	primary								35						121	3	2										95	3	3										86	1	2				74	1					1.116									
	secondary														123	3	5										630	8	10										123	1	2										1.339									
	<b>Total:</b>								<b>45</b>						<b>282</b>	<b>6</b>	<b>7</b>				<b>5</b>						<b>1.205</b>	<b>17</b>	<b>16</b>				<b>225</b>	<b>8</b>	<b>7</b>	<b>222</b>	<b>2</b>	<b>4</b>				<b>94</b>	<b>2</b>					<b>2.703</b>												
Culham	secondary														6	5	76																																		390									
	<b>Total:</b>														<b>6</b>	<b>5</b>	<b>76</b>				<b>15</b>	<b>4</b>	<b>143</b>				<b>9</b>	<b>9</b>	<b>123</b>																			<b>390</b>												
Frankfurt	nursery														61	1	3																																		159									
	primary														229	6	5																						48	6	12				40	7	20				615									
	secondary														189	8	15																						55	25	36				53	15	45				691									
	<b>Total:</b>														<b>479</b>	<b>15</b>	<b>23</b>				<b>543</b>	<b>5</b>	<b>14</b>				<b>113</b>	<b>31</b>	<b>49</b>				<b>106</b>	<b>22</b>	<b>65</b>													<b>1.465</b>												



## II. CHOICE OF LANGUAGES

### Choice of foreign languages - 2016-2017 school year

The three tables below give details of European School pupils' choices of language for study.

Language 2 is the first foreign language, which pupils start learning as from primary year 1 and which is compulsory up to Baccalaureate level. It is the medium of instruction in a number of subjects in secondary school. Since 1 September 2014, Language 3 has been a compulsory subject from secondary years 1 to 5 and may be taken up to Baccalaureate level. Learning a Language 4 is an option and starts in secondary year 4. (Some schools also offer a Language 5 which pupils may take at beginner level as a complementary course forming part of the curriculum of secondary years 6 and 7. It is not possible to take a L5 examination in the Baccalaureate).

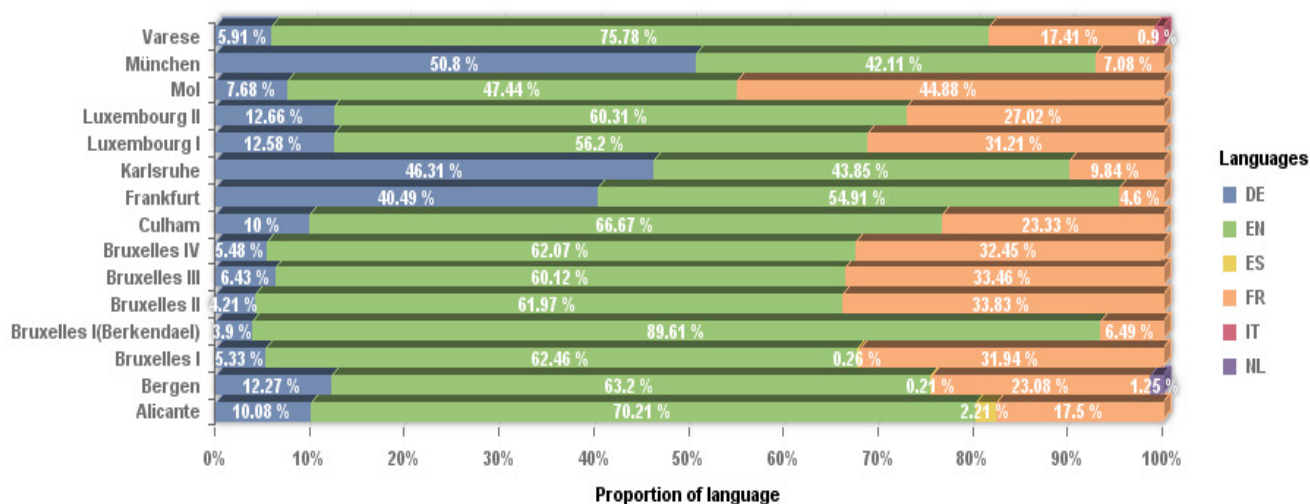
The table 'Choice of language 2' shows the percentage of pupils choosing English, French and German as Language 2 in the current year. Pupils' range of choices of Language 2 is confined to English, French and German up to secondary year 5. In years 6 and 7, although one of these three languages must necessarily be the language of tuition for the study of certain subjects, the choice of a different Language 2 is possible, although this is conditional upon compliance with the rules governing a change of L2 and the conditions regarding knowledge of the language in question. This choice is most often the language of the school's host country.

#### 1. Choice of language 2

Schools	English	French	German	Other (as from secondary year 6)
Alicante	70,2%	17,5%	10,1%	2,2%
Bergen	63,2%	23,1%	12,3%	1,3%
Brussels I (Uccle)	62,5%	31,9%	5,3%	0,3%
Brussels I (Berkendael)	89,6%	6,5%	3,9%	
Brussels II	62,0%	38,8%	4,2%	
Brussels III	60,1%	33,5%	6,4%	
Brussels IV	62,1%	32,5%	5,5%	
Culham	66,7%	23,3%	10,0%	
Frankfurt	54,9%	4,6%	40,5%	
Karlsruhe	43,9%	9,8%	46,3%	
Luxembourg I	56,2%	31,2%	12,6%	
Luxembourg II	60,3%	27,0%	12,7%	
Mol	47,4%	44,9%	7,7%	
Munich	42,1%	7,1%	50,8%	
Varese	75,8%	17,4%	5,9%	0,9%
<b>Total</b>	<b>61,1%</b>	<b>23,3%</b>	<b>15,6%</b>	

English clearly continues to be by far the most popular choice for Language 2, except at the Karlsruhe and Munich Schools, where German is chosen by approximately half of the pupils enrolled in a language section other than the German section, or enrolled in the latter section as SWALS.

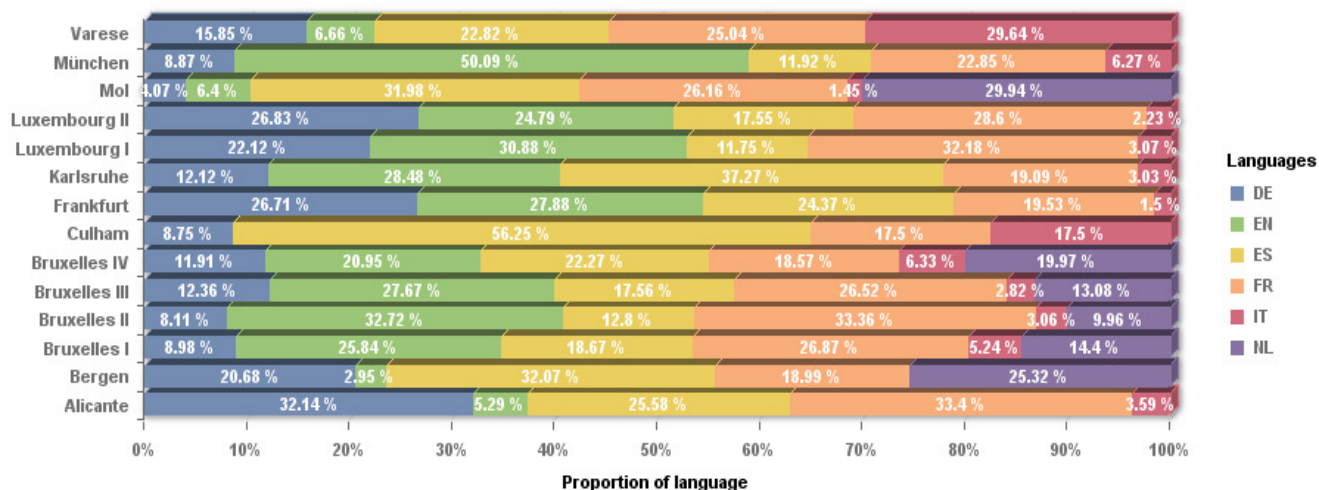




The three tables below show the most popular choices, in each school, of languages for study of Language 3 and Language 4 respectively.

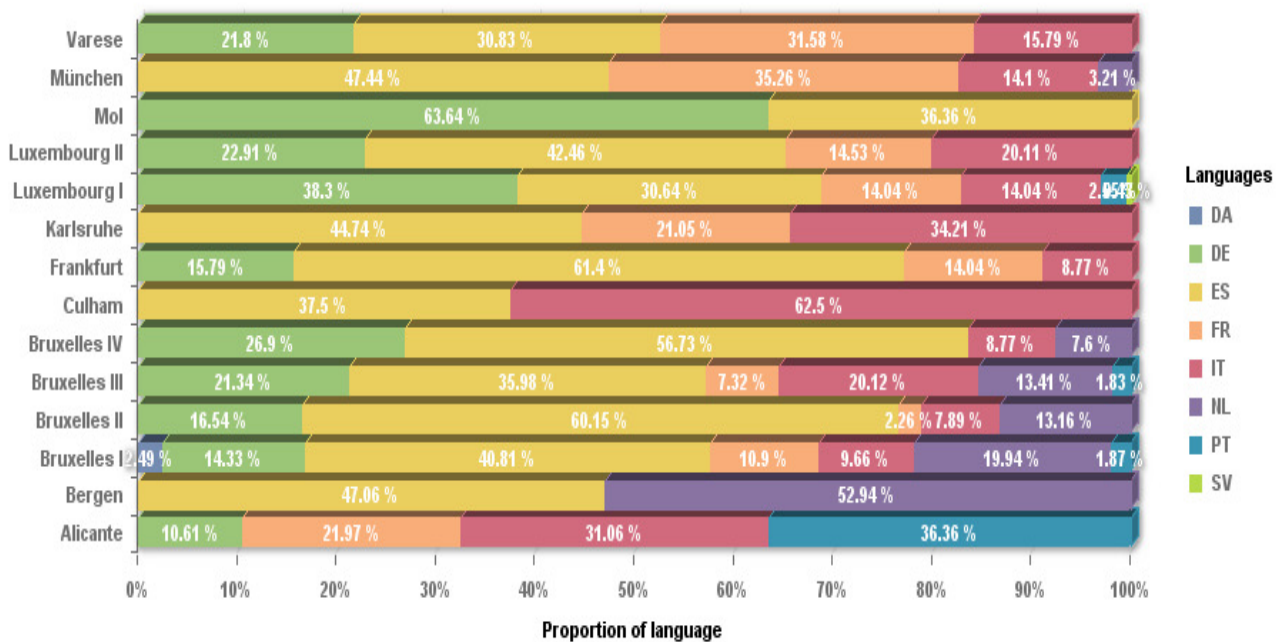
## 2. Choice of language 3

Schools	Choice 1		Choice 2		Choice 3	
	Language	%	Language	%	Language	%
Alicante	French	33,4%	German	32,1%	Spanish	25,6%
Bergen	Spanish	32,1%	Dutch	25,3%	German	20,7%
Brussels I	French	26,9%	English	25,8%	Spanish	18,7%
Brussels II	French	33,4%	English	32,7%	Spanish	12,8%
Brussels III	English	27,7%	French	26,5%	Spanish	17,6%
Brussels IV	Spanish	22,3%	English	21,0%	Dutch	20,0%
Culham	Spanish	56,3%	French	17,5%	Italian	17,5%
Frankfurt	English	27,9%	German	26,7%	Spanish	24,4%
Karlsruhe	Spanish	37,3%	English	28,5%	French	19,1%
Luxembourg I	French	32,2%	English	30,9%	German	22,1%
Luxembourg II	French	28,6%	German	26,8%	English	24,8%
Mol	Spanish	32,0%	Dutch	29,9%	French	26,2%
Munich	English	50,1%	French	22,9%	Spanish	11,9%
Varese	Italian	29,6%	French	25,0%	Spanish	22,8%



### 3. Choice of language 4

Schools	Choice 1		Choice 2		Choice 3	
	Language	%	Language	%	Language	%
Alicante	Portuguese	36,4%	Italian	31,1%	French	22,0%
Bergen	Dutch	52,9%	Spanish	47,1%		
Brussels I	Spanish	40,8%	Dutch	19,9%	German	14,3%
Brussels II	Spanish	60,2%	German	16,5%	Dutch	13,2%
Brussels III	Spanish	36,0%	German	21,3%	Italian	20,1%
Brussels IV	Spanish	56,7%	German	26,9%	Italian	8,8%
Culham	Italian	62,5%	Spanish	37,5%		
Frankfurt	Spanish	61,4%	German	15,8%	French	14,0%
Karlsruhe	Spanish	44,7%	Italian	34,2%	French	21,1%
Luxembourg I	German	38,3%	Spanish	30,6%	French	14,0%
Luxembourg II	Spanish	42,5%	German	22,9%	Italian	20,1%
Mol	German	63,6%	Spanish	36,4%		
Munich	Spanish	47,4%	French	35,3%	Italian	14,1%
Varese	French	31,6%	Spanish	30,8%	German	21,8%



### III. DEVELOPMENT OF STAFF

#### 1. Seconded staff per school

The table below shows, for each school, the number of staff seconded by each Member State to the system as a whole for the 2016-2017 school year.

Schools	Nursery	Primary	Secondary			Executive Staff	Bursars	Office of the Secretary General of the European Schools	TOTAL
			Teachers	Advisers	Librarians				
Alicante	6	18	39	3		3	1		70
Bergen	1	9	23	1		3	1		38
Brussels I (Uccle)	5	55	105	7	1	3			176
Brussels I (Berkendael)	4	4				1			9
Brussels II	8	50	104	10		3			175
Brussels III	8	44	93	5		3	1		154
Brussels IV	9	41	43	5		3	1		102
Culham			19	1		3			23
Frankfurt	3	22	41	4		3	1		74
Karlsruhe	3	14	33	2		3	1		56
Luxembourg I	10	47	87	5	1	3	1		154
Luxembourg II	5	35	64	6		2			112
Mol	2	14	32	2		3			53
Munich	3	33	69	6		3	1		115
Varese	3	22	52	6		3			86
OSG								7	
<b>TOTAL</b>	<b>70</b>	<b>408</b>	<b>804</b>	<b>63</b>	<b>2</b>	<b>42</b>	<b>8</b>	<b>7</b>	<b>1404</b>

## 2. Seconded staff per Member State

The table below shows the number of staff seconded by each Member State to the system as a whole for the 2016-2017 school year.

Nationality	<u>Seconded staff: Teachers</u>	<u>Seconded staff: Advisers</u>	<u>Seconded staff: Librarians</u>	<u>Seconded staff: Executive staff</u>	<u>Seconded staff: Bursars</u>	<u>Seconded staff: OSG</u>	<u>TOTAL Seconded staff in post</u>	(%)
Austrian	24			3			27	1,9%
Belgian	139	35	1	3	2	1	181	12,9%
British	108			3			111	7,9%
Bulgarian	11	3					14	1,0%
Croatian	1						1	0,1%
Cypriot	1						1	0,1%
Czech	15	1		2			18	1,3%
Danish	30			2			32	2,3%
Dutch	67	1		3	1		72	5,1%
Estonian	5	1		3			9	0,6%
Finnish	27	1					28	2,0%
French	199	2		3			204	14,5%
German	219	8		3	3	1	234	16,7%
Greek	26	1		3		1	31	2,2%
Hungarian	15			1			16	1,1%
Irish	60			3			63	4,5%
Italian	103	6		3		1	113	8,0%
Latvian	3						3	0,2%
Lithuanian	11						11	0,8%
Luxembourg	17		1		1		19	1,4%
Maltese	4			1			5	0,4%
Polish	27			1			28	2,0%
Portuguese	28	1		1			30	2,1%
Romanian	6						6	0,4%
Slovakian	13						13	0,9%
Slovenian	5						5	0,4%
Spanish	83	3		2	1	3	92	6,6%
Swedish	35			2			37	2,6%
<b>TOTAL</b>	<b>1282</b>	<b>63</b>	<b>2</b>	<b>42</b>	<b>8</b>	<b>7</b>	<b>1404</b>	

### 3. Development of locally recruited teachers – 2013-2016

The table below gives for each year since 2013 a number of locally recruited teachers for each school. This number corresponds to full-time teacher equivalents, i.e. with a teaching load of 21 weekly periods in the secondary and 25.5 weekly hours in the primary.

Schools	2013	2014	2015	2016	Difference between 2013 and 2016	
	Locally recruited teachers	Locally recruited teachers	Locally recruited teachers	Locally recruited teachers	Locally recruited teachers	%
Alicante	24	23	31	35	11	45,8%
Bergen	21	22	25	28	7	33,3%
Brussels I (Uccle)	49	72	84	97	48	98,0%
Brussels I (Berkendael)				4	4	
Brussels II	75	69	71	75	0	0,0%
Brussels III	49	42	61	75	26	53,1%
Bruxelles IV	50	72	90	96	46	92,0%
Culham	28	28	28	27	-1	-3,6%
Frankfurt	47	63	57	59	12	25,5%
Karlsruhe	40	38	39	43	3	7,5%
Luxembourg I	75	73	84	96	21	28,0%
Luxembourg II	61	64	81	94	33	54,1%
Mol	16	17	22	29	13	81,3%
Munich	70	70	80	83	13	18,6%
Varese	53	54	72	70	17	32,1%
<b>Total</b>	<b>658</b>	<b>707</b>	<b>825</b>	<b>911</b>	<b>253</b>	<b>38,4%</b>

#### 4. Seconded staff and locally recruited teachers (full-time equivalent) for the 2016-2017 school year

Schools	Seconded teachers	Ed. Advisers/ Librarians	Executive staff	Total Seconded staff		Loc. recr. teachers Primary	Loc. recr. teachers Secondary	Loc. recr. teachers religion and ethics	Total Loc. recr. teachers		Total
Alicante	63	3	3	69	66,3%	11	22	2	35	33,7%	104
Bergen	33	1	3	37	56,9%	10	17	1	28	43,1%	65
Brussels I (Uccle)	165	8	3	176	64,5%	30	58	9	97	35,5%	273
Brussels I (Berkendael)	8		1	9	69,2%	4		0	4	30,8%	13
Brussels II	162	10	3	175	70,0%	24	43	8	75	30,0%	250
Brussels III	145	5	3	153	67,1%	23	43	9	75	32,9%	228
Brussels IV	93	5	3	101	51,3%	25	64	7	96	48,7%	197
Culham	19	1	3	23	46,0%		26	1	27	54,0%	50
Frankfurt	66	4	3	73	55,3%	34	20	5	59	44,7%	132
Karlsruhe	50	2	3	55	56,1%	16	24	3	43	43,9%	98
Luxembourg I	144	6	3	153	61,4%	41	46	9	96	38,6%	249
Luxembourg II	104	6	2	112	54,4%	37	50	7	94	45,6%	206
Mol	48	2	3	53	64,6%	9	18	2	29	35,4%	82
Munich	105	6	3	114	57,9%	35	42	6	83	42,1%	197
Varese	77	6	3	86	55,1%	33	32	5	70	44,9%	156
<b>Total</b>	<b>1282</b>	<b>65</b>	<b>42</b>	<b>1389</b>	<b>60,4%</b>	<b>332</b>	<b>505</b>	<b>74</b>	<b>911</b>	<b>39,6%</b>	<b>2300</b>

The above table shows the total number of seconded staff in each school, i.e. the number of teachers, educational advisers, librarians and executive staff (apart from the schools' Bursars), seconded by the Member States for the 2016-2017 school year.

The table also gives a figure for the number of locally recruited teachers for each school. This number corresponds to the one mentioned in the table on page 21. However, it also gives a breakdown of primary and secondary locally recruited teachers and of religion/ethics locally recruited teachers.

## 5. Pupil to Educational Adviser ratio

The table below gives information about the pupil to educational adviser ratio in the secondary schools since 2013.

Schools	2013		2014		2015		2016	
	Ed. Adv.	Pupils-Ed.	Ed. Adv.	Pupils-Ed.	Ed. Adv.	Pupils-Ed.	Ed. Adv.	Pupils-Ed.
		Adv. ratio		Adv. ratio		Adv. ratio		Adv. ratio
Alicante	3	185	3	178	3	173	3	178
Bergen	2	154	2	153	2	155	1	302
Brussels I (Uccle)	10	172	9	195	9	202	7	264
Brussels I (Berkendael)								
Brussels II	9	191	9	183	9	179	10	167
Brussels III	9	179	9	176	5	319	5	325
Brussels IV	2	351	4	237	4	288	5	268
Culham	1	418	1	405	1	397	1	390
Frankfurt	2	290	3	218	4	165	4	173
Karlsruhe	0	522	2	243	2	219	2	214
Luxembourg I	9	151	6	231	4	348	5	374
Luxembourg II	6	176	6	183	6	187	6	202
Mol	3	139	3	141	3	134	2	208
Munich	5	223	6	196	4	309	6	213
Varese	5	153	5	155	4	192	6	121
<b>Total</b>	<b>66</b>	<b>194</b>	<b>68</b>	<b>194</b>	<b>60</b>	<b>224</b>	<b>63</b>	<b>221</b>

## 6. Administrative and ancillary staff

The table below shows the number of posts of administrative and ancillary staff in each school and at the Office of the Secretary-General for the years 2013 to 2016 according to the organigrams appearing in the budgets. It also shows the percentage difference between the number of such staff members at the beginning and end of that period.

<b>Number of posts of administrative and ancillary staff from 2013 to 2016 according to the organigrams appearing in the budgets</b>					
<b>Schools</b>	<b>2013</b>	<b>2014</b>	<b>2015</b>	<b>2016</b>	<b>Diff. 2013-2016 (%)</b>
<b>Alicante</b>	22,50	23,25	23,25	<b>24,50</b>	<b>8,9%</b>
<b>Bergen</b>	15,25	14,50	14,50	<b>15,80</b>	<b>3,6%</b>
<b>Brussels I</b>	43,72	46,12	46,12	<b>53,62</b>	<b>22,6%</b>
<b>Brussels II</b>	37,30	<b>39,30 *</b>	40,30	<b>41,30</b>	<b>10,7%</b>
<b>Brussels III</b>	38,75	38,75	39,75	<b>39,75</b>	<b>2,6%</b>
<b>Brussels IV</b>	24,60	29,60	33,10	<b>33,10</b>	<b>34,6%</b>
<b>Culham</b>	14,50	14,50	14,50	<b>15,50</b>	<b>6,9%</b>
<b>Frankfurt</b>	19,50	19,50	21,50	<b>21,60</b>	<b>10,8%</b>
<b>Karlsruhe</b>	21,90	21,90	21,90	<b>21,60</b>	<b>-1,4%</b>
<b><u>Luxembourg:</u></b>	<b>82,48</b>	<b>86,48</b>	<b>92,93</b>	<b>91,98</b>	<b>11,5%</b>
<b>Luxembourg I</b>	42,30	44,80	<b>47,30 *</b>	<b>47,80</b>	<b>13,0%</b>
<b>Luxembourg II</b>	40,18	41,68	43,63	<b>44,18</b>	<b>10,0%</b>
<b>Mol</b>	20,11	<b>19,11 *</b>	19,11	<b>19,20</b>	<b>-4,5%</b>
<b>Munich</b>	32,50	32,00	32,00	<b>32,50</b>	<b>0,0%</b>
<b>Varese</b>	<b>27,43 *</b>	27,43	27,43	<b>28,43</b>	<b>3,7%</b>
<b>OSGES</b>	39,50	47,50	47,50	<b>46,50</b>	<b>17,7%</b>
<b>TOTAL</b>	<b>440,04</b>	<b>446,94</b>	<b>473,89</b>	<b>485,38</b>	<b>10,3%</b>

Posts of nursery assistant are included in this table (**2013: 66.8 – 2014: 69.06 – 2015: 66.8 – 2016: 80.76**). The year on year variations in the number of AAS posts are due largely to posts of nursery assistant, which are created or discontinued according to the number of pupils in the nursery classes, in accordance with the relevant decisions of the Board of Governors.

The **16.3** posts of auxiliary staff are included in the above table.

\* The boxes highlighted in red mean that a correction had to be made for the Brussels II, Luxembourg I, Mol and Varese Schools. Thus, if this table is compared with the one in the previous versions of this document, it is normal that the totals and averages calculated for this table no longer correspond.



## IV. 2016 BACCALAUREATE RESULTS

The 57th session of the European Baccalaureate was chaired by European Baccalaureate President from Denmark, Prof. Dr. Carl Winsløw.

A total of 1891 candidates from 13 European Schools and 6 Accredited Schools registered for the European Baccalaureate 2016 session. 41 candidates were not awarded the European Baccalaureate Diploma: 6 candidates dropped out from the examinations session and 35 candidates failed.

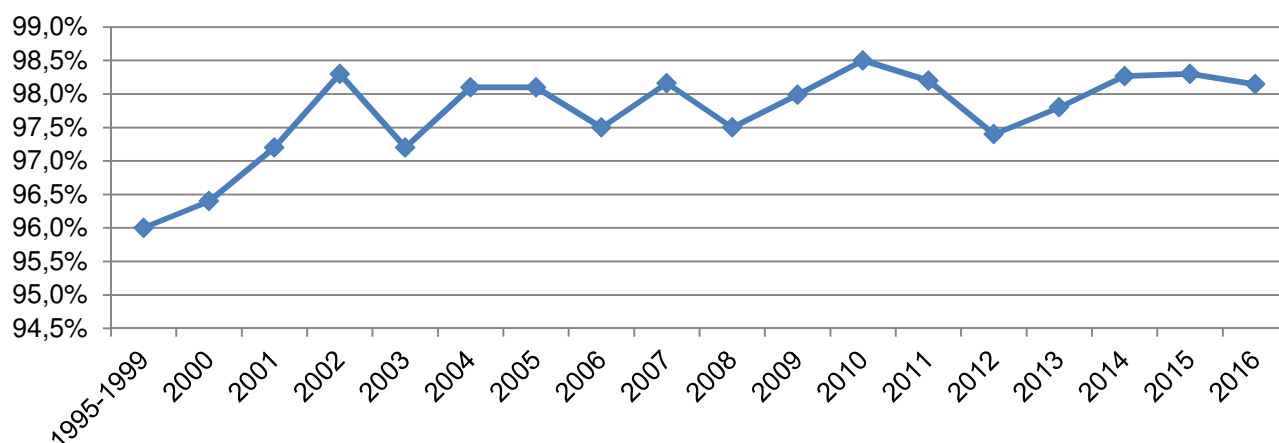
During the written examinations 8 candidates were partially absent due to medical reasons and 11 due to participation in National Examinations, namely the Spanish *Selectividad*. 21 substitute examinations were organised in June 2016.

Three candidates were allowed to take part in an extraordinary session in September 2016, 10 substitute examinations were organised accordingly.

7 written examinations were organised for the appeals cases accepted.

Overall pass rate in 2016 Baccalaureate: 98.1%

**Pass rate**



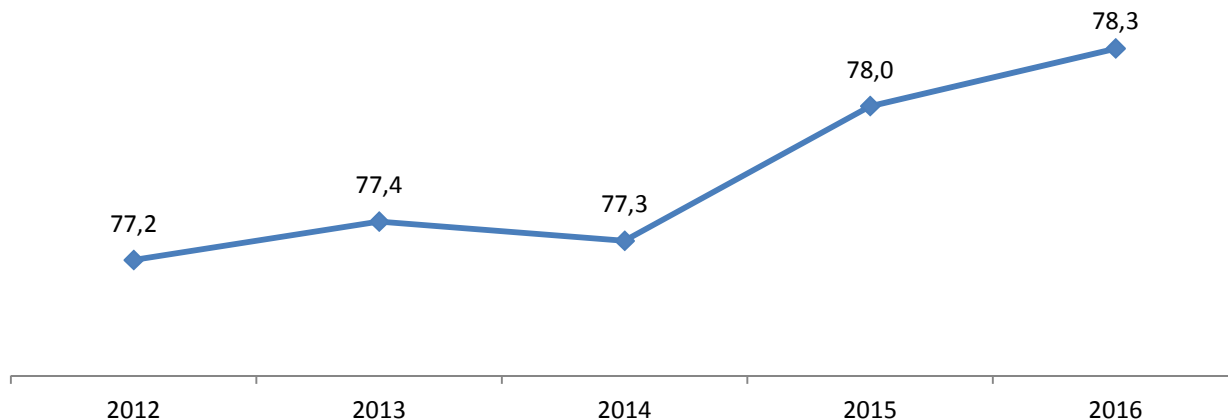
The following table shows the pass rate in the different language sections. This year, the pass rates by language section ranged between 93.6% and 100%. Due to small numbers of bachelors in some sections the results are not always statistically comparable.

**Pass rate by language section**

Ling. Section	Passed	Candidates	Pass rate
DA	29	30	96.7%
DE	343	349	98.3%
EL	57	58	98.3%
EN	446	454	98.2%
ES	105	109	96.3%
FI	40	40	100.0%
FR	439	447	98.2%
HU	15	15	100.0%
IT	178	179	99.4%
NL	109	111	98.2%
PL	17	18	94.4%
PT	44	47	93.6%
SV	28	28	100.0%
<b>Total</b>	<b>1850</b>	<b>1885</b>	<b>98.1%</b>

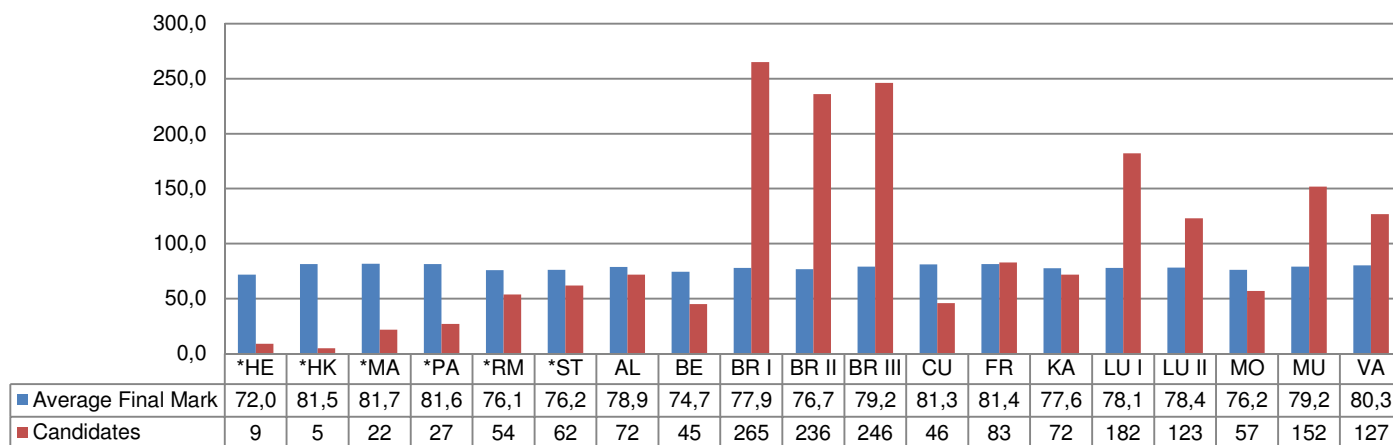
For all the candidates who participated in the 2016 session of the Baccalaureate, the average Final Mark was 78.3. A comparison of the Final Marks shows a slight rise over the past five years.

### Overall average of past five years



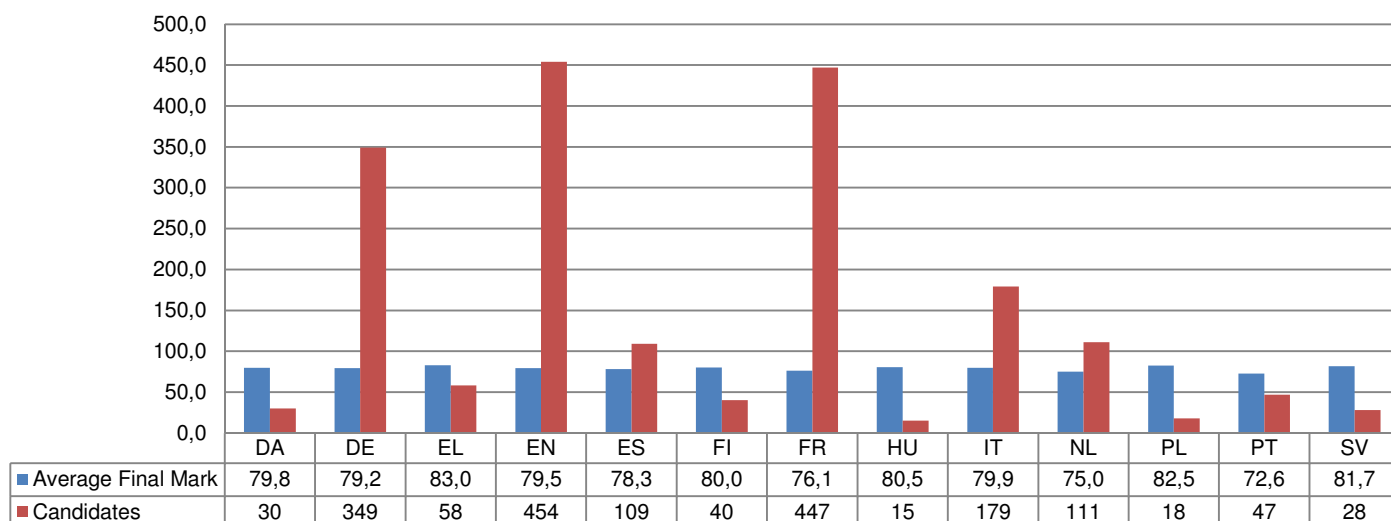
This year the average Final Mark ranged between 72.0 and 81.7 across the schools:

### Final Mark Average per School



Across the Language Sections the average Final Mark ranged between 72.6 and 83.0. The small number of candidates in certain sections does not allow the average to be regarded as statistically significant.

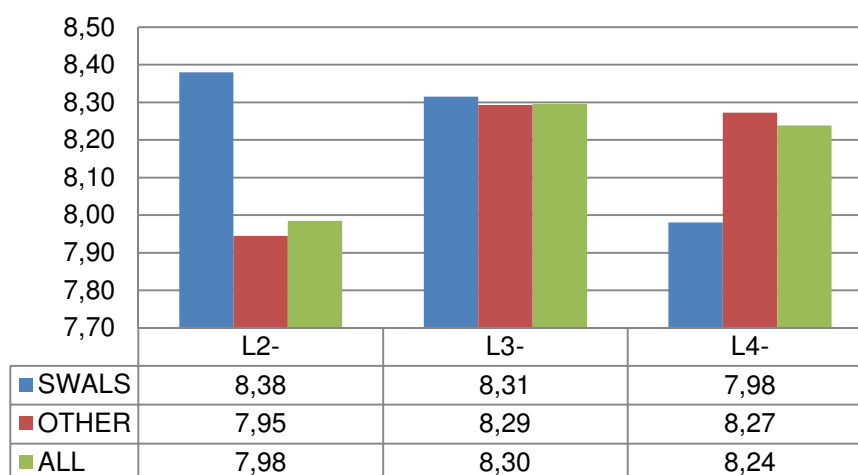
## Final Mark Average per Language Section



This year, 172 Students Without A Language Section registered for the European Baccalaureate session.

In the next graph their performance in Languages 2, 3 and 4 can be seen. It is to be observed that their performance in Language 2 is higher than the average.

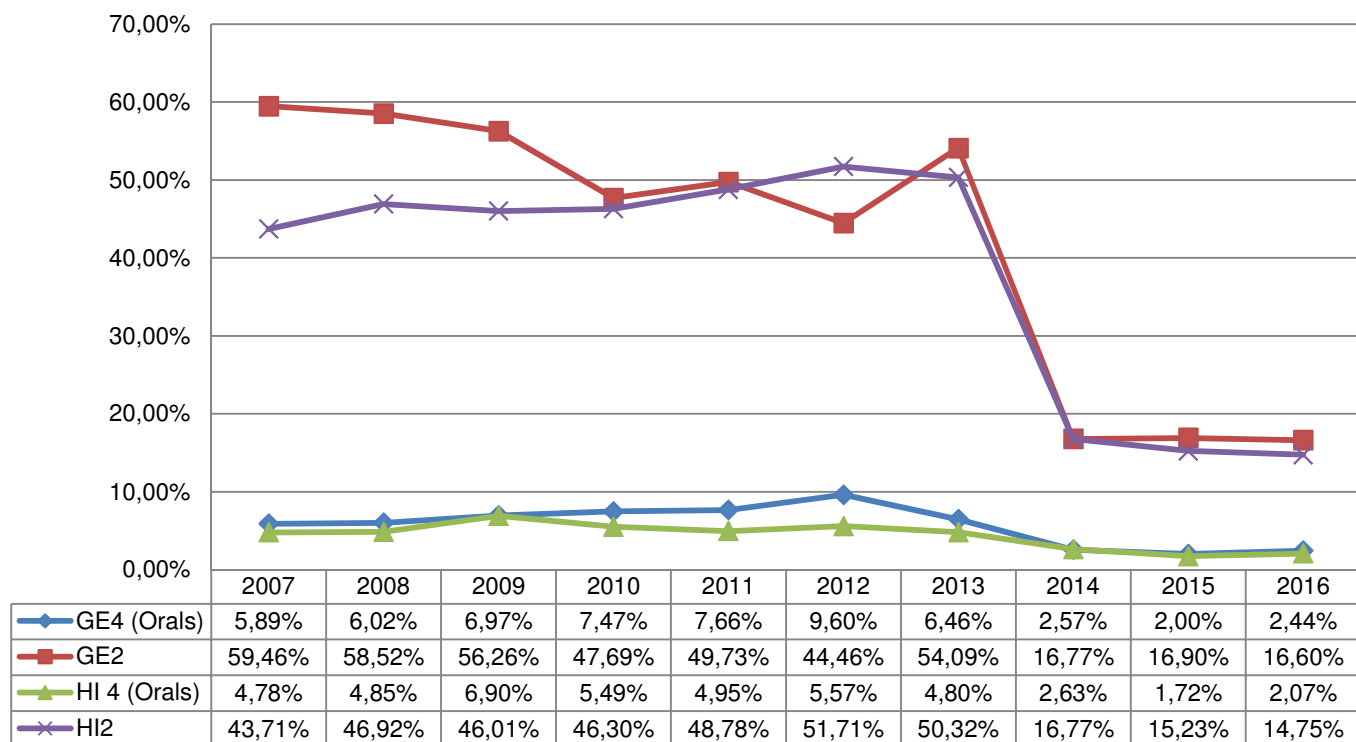
## Final Mark for L2, L3 and L4



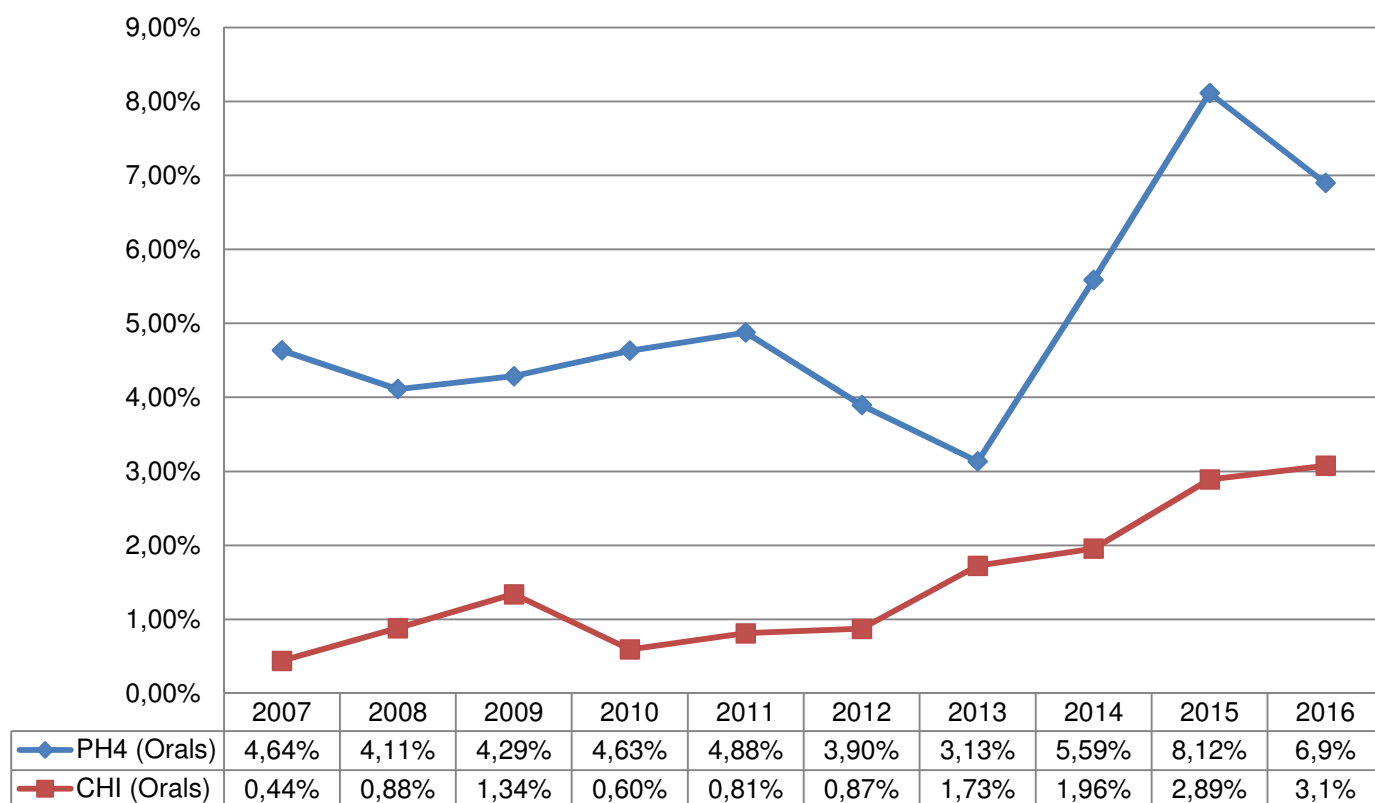
In the following table the performance of SWALS per subject compared with pupils in their language sections can be seen. As can be observed, there is no significant deviation in marks, even for those subjects taught in Language 2 (in yellow) where SWALS would be expected to score higher.

Subject	bi4	chi	eco	ge4	hi4	ma3	ma5	maa	ph4	phy
SWALS	7.47	7.45	7.43	7.39	7.57	6.73	7.49	8.65	7.79	7.56
OTHER	7.47	7.50	7.48	7.57	7.64	6.93	7.26	8.31	8.12	7.48
ALL	7.47	7.50	7.48	7.55	7.63	6.91	7.27	8.34	8.09	7.49

The European Baccalaureate reform's decision to reduce the number of oral examinations from four to three in the year 2013-2014 has had the greatest impact on the orals in History and Geography, 2-period and 4-period options, the number of candidates choosing these examinations falling by more than 64% in HI2, 48% in HI4, 63% in GE2 and 54% in GE4.



Candidates choosing Philosophy 4 almost tripled in number (49 candidates in 2013 to 130 in 2016) and Chemistry orals doubled this year compared with the year 2013 (from 27 to 58)



## Annex 1

PUPILS COMING FROM THE MEMBER STATES/SECONDED TEACHERS BY MEMBER STATE IN ALL SCHOOLS AUTUMN 2016 WITHOUT MUNICH												
A	B	C	E	E	F	G	H	I	J	K	L	M
Nationalities / Member States	Pupils with an EU nationality enrolled 15.10.2016	%	Secoded Staff in post per Member State in October 2016	% Staff out of a Member State	Staff share required in function of pupils	Language section coefficient	Target level	Difference	National average salary	Calculated contribution	Expected contribution in 2017 (33%)	OR expected secoded post contribution in 2017
AT	306.33	1.33	21	1.63	17.12	1.00	17.12	3.90	€ 40,284	€ 0	€ 0	0
BE	2,682.75	11.63	177	13.73	149.96	1.00	149.96	27.00	€ 51,683	€ 0	€ 0	0
BG	425.33	1.84	14	1.09	23.77	0.80	19.02	-5.00	€ 4,436	€ 22,180	€ 8,872	2
CY	50.67	0.22	1	0.08	2.83	0.80	2.27	-1.30	€ 42,323	€ 55,020	€ 0	0
CZ	423.50	1.84	16	1.24	23.67	0.80	18.94	-2.90	€ 13,135	€ 38,092	€ 13,135	1
DE	2,556.00	11.08	192	14.90	142.87	1.00	142.87	49.10	€ 53,860	€ 0	€ 0	0
DK	506.67	2.20	31	2.40	28.32	0.80	22.66	8.30	€ 53,730	€ 0	€ 0	0
EE	258.50	1.12	8	0.62	14.45	0.80	11.56	-3.60	€ 9,293	€ 33,455	€ 9,293	1
EL	903.50	3.92	27	2.09	50.50	0.80	40.40	-13.40	€ 19,713	€ 264,154	€ 78,852	4
ES	2,118.91	9.19	88	6.83	118.44	0.80	94.75	-6.80	€ 28,334	€ 192,671	€ 56,668	2
FI	536.50	2.33	28	2.17	29.99	0.80	23.99	4.00	€ 37,702	€ 0	€ 0	0
FR	2,907.33	12.61	194	15.05	162.51	1.00	162.51	31.50	€ 31,085	€ 0	€ 0	0
HR	119.84	0.52	1	0.08	6.70	0.80	5.36	-4.40	€ 11,400	€ 50,160	€ 11,400	1
HU	496.08	2.15	16	1.24	27.73	0.80	22.18	-6.20	€ 6,638	€ 41,156	€ 13,276	2
IE	418.33	1.81	60	4.65	23.38	1.00	23.38	36.60	€ 48,489	€ 0	€ 0	0
IT	2,369.42	10.27	102	7.91	132.44	0.80	105.95	-4.00	€ 28,215	€ 112,860	€ 28,215	1
LT	367.17	1.59	11	0.85	20.52	0.80	16.42	-5.40	€ 5,223	€ 28,204	€ 10,446	2
LU	233.25	1.01	17	1.32	13.04	1.00	13.04	4.00	€ 91,629	€ 0	€ 0	0
LV	266.83	1.16	3	0.23	14.91	0.80	11.93	-8.90	€ 3,893	€ 34,648	€ 11,679	3
MT	74.75	0.32	5	0.39	4.18	1.00	4.18	0.80	€ 15,332	€ 0	€ 0	0
NL	833.84	3.62	66	5.12	46.61	0.80	37.29	28.70	€ 46,774	€ 0	€ 0	0
PL	773.75	3.36	27	2.09	43.25	0.80	34.60	-7.60	€ 9,300	€ 70,680	€ 27,900	3
PT	661.50	2.87	30	2.33	36.98	0.80	29.58	0.40	€ 24,606	€ 0	€ 0	0
RO	457.84	1.99	6	0.47	25.59	0.80	20.47	-14.50	€ 5,750	€ 83,375	€ 28,750	5
SE	577.34	2.50	36	2.79	32.27	0.80	25.82	10.18	€ 42,804	€ 0	€ 0	0
SI	205.83	0.89	5	0.39	11.51	0.80	9.20	-4.20	€ 21,661	€ 90,976	€ 21,661	1
SK	311.67	1.35	13	1.01	17.42	0.80	13.94	-0.90	€ 7,912	€ 7,121	€ 0	0
UK	1,217.09	5.28	94	7.29	68.03	1.00	68.03	25.97	€ 33,846	€ 0	€ 0	0
TOTAL	23,060.52	100.00	1,289	100.00	1,289.00		1,147.42	141.35		€ 1,124,751	€ 320,147	28

Under the cost sharing agreement, each Member State has five years in which to reach the 'Target level'. In order to achieve balance at the end of the five years, the Member States are requested to second a variable number of teachers in each of the five years:

- The first year, Member States have been requested to second 1/5 (20%) of the number of teachers in the 'Difference' column.
- The second year, Member States have been requested to second 1/4 (25%) of the number of teachers in the 'Difference' column.
- The third year, Member States have been requested to second 1/3 (33%) of the number of teachers in the 'Difference' column.
- The fourth year, Member States will be requested to second 1/2 (50%) of the number of teachers in the 'Difference' column.
- The fifth year, Member States will be requested to second the number of teachers in the 'Difference' column.

In this way, at the end of the five years, the right balance amongst the Member States would be achieved.

Nationalities / Member States	Pupils with an EU nationality enrolled 15.10.2014	Pupils with an EU nationality enrolled 15.10.2015	Pupils with an EU nationality enrolled 15.10.2016	variation
AT	297,00	318,83	306,33	9,33
BE	2.269,00	2.568,42	2.682,75	413,75
BG	308,00	370,83	425,33	117,33
CY	33,00	39,50	50,67	17,67
CZ	308,00	390,83	423,50	115,50
DE	2.689,00	2.596,17	2.556,00	-133,00
DK	559,00	522,83	506,67	-52,33
EE	225,00	232,50	258,50	33,50
EL	805,00	869,17	903,50	98,50
ES	1.978,00	2.024,33	2.118,91	140,91
FI	593,00	559,00	536,50	-56,50
FR	2.747,00	2.802,25	2.907,33	160,33
HR	48,00	100,83	119,84	71,84
HU	357,00	454,08	496,08	139,08
IE	428,00	421,67	418,33	-9,67
IT	2.218,00	2.334,24	2.369,42	151,42
LT	321,00	364,83	367,17	46,17
LU	204,00	216,33	233,25	29,25
LV	217,00	247,33	266,83	49,83
MT	73,00	74,50	74,75	1,75
NL	909,00	878,00	833,84	-75,16
PL	532,00	693,67	773,75	241,75
PT	582,00	635,00	661,50	79,50
RO	293,00	385,00	457,84	164,84
SE	552,00	595,25	577,34	25,34
SI	126,00	187,83	205,83	79,83
SK	227,00	283,67	311,67	84,67
UK	1.416,00	1.265,83	1.217,09	-198,91
TOTAL	21.314,00	22.432,72	23.060,52	1.746,52
% variation		5,25	2,80	
%variation over 2 years			8,19	

## Development of the pupil population of 28 EU nationalities without Munich

Nationalities / Member States	Seconded Staff in post per Member State in September 2014	Seconded Staff in post per Member State in October 2015	Seconded Staff in post per Member State in October 2016	variation
AT	18	20	21	3,00
BE	202	190	177	-25,00
BG	7	8	14	7,00
CY	0	0	1	1,00
CZ	15	16	16	1,00
DE	203	201	192	-11,00
DK	28	30	31	3,00
EE	6	7	8	2,00
EL	38	38	27	-11,00
ES	86	87	88	2,00
FI	31	30	28	-3,00
FR	187	188	194	7,00
HR	0	0	1	1,00
HU	14	15	16	2,00
IE	61	58	60	-1,00
IT	89	98	102	13,00
LT	8	10	11	3,00
LU	17	14	17	0,00
LV	3	3	3	0,00
MT	5	5	5	0,00
NL	75	70	66	-9,00
PL	23	25	27	4,00
PT	30	30	30	0,00
RO	2	4	6	4,00
SE	37	33	36	-1,00
SI	3	4	5	2,00
SK	11	12	13	2,00
UK	143	119	94	-49,00
TOTAL	1.342	1.315	1.289	-53,00
% variation		-2,01	-1,98	
%variation over 2 years			-3,95	

## Development of secondments