



Schola Europaea

Office of the Secretary-General

Ref.: 2015-10-D-6-en-2

Orig.: FR

Facts and figures on the beginning of the 2015-2016 school year in the European Schools

Board of Governors of the European Schools

Meeting on 1, 2 and 3 December 2015 – Brussels

INTRODUCTION

This document contains a number of facts and figures, *as at 15 October 2015*, on the situation of the European Schools after the beginning of the 2015-2016 school year, in terms of pupil population, of choices of languages by pupils and of staff (seconded, locally recruited teachers and AAS).

This document also includes figures on pupils' repeat rate for the 2014-2015 school year and the 2015 Baccalaureate results.

These facts and figures will subsequently be incorporated into the Secretary-General's annual report, which will be presented to the Board of Governors in April 2016.

I.DEVELOPMENT OF THE PUPIL POPULATION

1. Total pupil population

The table below shows pupil numbers for each school and the total numbers for the system as a whole, year on year, for the period 2012-2015 and the percentage variation year on year over the reference period. The last column shows the percentage variation in pupil numbers over the period as a whole.

Pupil population from 2012 to 2015

Schools	2012		2013		2014		2015		Difference between 2012 and 2015	
	Population	%	Population	%	Population	%	Population	%	Population	%
Alicante	1052	2,43%	1042	-0,95%	1007	-3,36%	980	-2,68%	-72	-6,84%
Bergen	556	-4,30%	565	1,62%	552	-2,30%	537	-2,72%	-19	-3,42%
Brussels I	3040	-2,91%	3083	1,41%	3278	6,33%	3394	3,54%	354	11,64%
Brussels II	3144	-1,01%	3078	-2,10%	2958	-3,90%	2998	1,35%	-146	-4,64%
Brussels III	2892	-0,92%	2870	-0,76%	2906	1,25%	2989	2,86%	97	3,35%
Brussels IV	1530	44,48%	1932	26,27%	2263	17,13%	2498	10,38%	968	63,27%
Culham	682	-8,46%	600	-12,02%	537	-10,50%	459	-14,53%	-223	-32,70%
Frankfurt	1191	4,84%	1247	4,70%	1424	14,19%	1452	1,97%	261	21,91%
Karlsruhe	911	-2,46%	925	1,54%	863	-6,70%	813	-5,79%	-98	-10,76%
Luxembourg I	2715	-24,14%	2786	2,62%	2972	6,68%	3081	3,67%	366	13,48%
Luxembourg II	1965	105,33%	2101	6,92%	2243	6,76%	2348	4,68%	383	19,49%
Mol	744	-3,00%	738	-0,81%	723	-2,03%	722	-0,14%	-22	-2,96%
Munich	2063	3,67%	2183	5,82%	2237	2,47%	2261	1,07%	198	9,60%
Varese	1384	1,32%	1397	0,94%	1422	1,79%	1371	-3,59%	-13	-0,94%
Total	23869	2,15%	24547	2,84%	25385	3,41%	25903	2,04%	2034	8,52%

The total population of the European Schools on 15 October 2015 was **25,903** pupils, representing an average growth rate of **2.04%** compared with 2014, although this covers markedly different situations according to the Schools.

66.82% of the total pupil population is to be found in the Brussels (**45.86%**) and Luxembourg (**20.96%**) Schools.

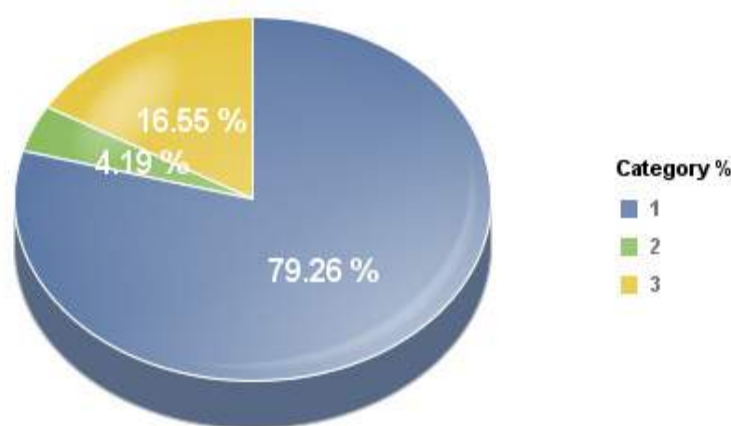
On 4 September 2012, the European School, Luxembourg II moved into its new premises at Bertrange, a locality situated 7 kilometres to the west of the centre of the city of Luxembourg. It is located on a magnificent 14-hectare site, near another school, Lycée Josy Barthel.

2348 pupils (nursery, primary and secondary) are on roll for the 2015-2016 school year.

An increase of **4.68%** in the number of pupils on roll at Luxembourg II between 2014 and 2015 is to be noted.

In Brussels, the three old schools continue to be overcrowded, whilst the Brussels IV School, on its new site at Laeken, which opened in September 2012, has **2498** pupils on roll (i.e. up by **over 10%** on last year).

2. Pupil population by category



The three tables below show, for each year from 2012 to 2015, the number of pupils in the three categories and the percentage for which each category accounts in relation to the total number of pupils in each school. The last two columns in each of these tables give the variation, in absolute and percentage terms, in pupil numbers in the various categories in each school and in the system as a whole over the same period.

Pupil population from 2012 to 2015: Category I population

Schools	2012		2013		2014		2015		Difference between 2012 and 2015	
	Population	%	Population	%	Population	%	Population	%	Population	%
Alicante	577	54,85 %	606	58,16 %	615	61,07%	624	63,67%	47	8,15%
Bergen	108	19,42 %	123	21,77 %	131	23,73%	124	23,09%	16	14,81%
Brussels I	2807	92,34 %	2843	92,22 %	3116	95,06%	3275	97,35%	468	16,67%
Brussels II	2945	93,67 %	2910	94,54 %	2814	95,13%	2872	95,79%	-73	-2,48%
Brussels III	2752	95,16 %	2736	95,33 %	2782	95,73%	2880	95,35%	128	4,65%
Brussels IV	1492	97,52 %	1878	97,20 %	2191	96,82%	2408	96,39%	916	61,39%
Culham	75	11,00 %	57	9,50 %	43	8,01%	36	7,84%	-39	-52,00%
Frankfurt	823	69,10 %	903	72,41 %	1118	78,51%	1196	82,36%	373	45,32%
Karlsruhe	173	18,99 %	180	19,46 %	186	21,55%	167	20,54%	-6	-3,47%
Luxembourg I	2322	85,52 %	2352	84,42 %	2461	82,81%	2510	81,46%	188	8,10%
Luxembourg II	1445	73,54 %	1526	72,63 %	1614	71,96%	1668	71,03%	223	15,43%
Mol	140	18,82 %	154	20,87 %	163	22,54%	157	21,74%	17	12,14%
Munich	1610	78,04 %	1705	78,10 %	1768	79,03%	1815	80,27%	205	12,73%
Varese	748	54,05 %	791	56,62 %	821	57,74%	798	58,20%	50	6,68%
Total	18017	75,48%	18764	76,44%	19823	78,09%	20530	79,26%	2513	13,95%

Category I pupils are mainly children of officials and contract staff (at least one year) of the EU institutions and of the staff of the European Schools, and of the European Patent Office in the case of Munich.

The percentage of pupils belonging to Category I has been steadily increasing in recent years and this category now accounts for **over 79%** of the pupil population of the system as a whole.

The Brussels and Luxembourg Schools, where there are large numbers of EU officials and the inadequacy of the infrastructure requires a restrictive enrolment policy to be enforced for Categories II and III pupils, have a high percentage of Category I pupils – **over 90% in the four Brussels Schools** – whereas the schools located in places where the number of EU officials is small have a far lower percentage of such pupils.

At Varese, **more than half** of the pupils are Category I pupils, while at Munich pupils belonging to this category, the vast majority of whom are children of staff of the European Patent Office, account for **over 80%** of the pupil population.

In the two newer schools outside the Brussels/Luxembourg region – Alicante and Frankfurt – the increase in the percentage of this category of pupil has continued, with Frankfurt now having reached **82.36%**.

Pupil population from 2012 to 2015: Category II population

Schools	2012		2013		2014		2015		Difference between 2012 and 2015	
	Population	%	Population	%	Population	%	Population	%	Population	%
Alicante	1	0,10 %	1	0,10 %	0	0,00%	0	0,00%	-1	-100,00%
Bergen	1	0,18 %	1	0,18 %	1	0,18%	0	0,00%	-1	-100,00%
Brussels I	52	1,71 %	43	1,39 %	39	1,19%	36	1,06%	-16	-30,77%
Brussels II	95	3,02 %	81	2,63 %	67	2,27%	62	2,06%	-33	-34,74%
Brussels III	45	1,56 %	44	1,53 %	38	1,31%	38	1,27%	-7	-15,56%
Brussels IV	16	1,05 %	27	1,40 %	30	1,33%	40	1,60%	24	150,00%
Culham	29	4,25 %	27	4,50 %	25	4,66%	21	4,57%	-8	-27,59%
Frankfurt	108	9,07 %	109	8,74 %	89	6,25%	77	5,30%	-31	-28,70%
Karlsruhe	254	27,88 %	247	26,70 %	216	25,03%	188	23,12%	-66	-25,98%
Luxembourg I	79	2,91 %	82	2,94 %	91	3,06%	87	2,82%	8	10,13%
Luxembourg II	168	8,55 %	188	8,95 %	200	8,92%	193	8,21%	25	14,88%
Mol	11	1,48 %	11	1,49 %	8	1,11%	4	0,55%	-7	-63,64%
Munich	124	6,01 %	139	6,37 %	150	6,71%	154	6,81%	30	24,19%
Varese	174	12,57 %	174	12,46 %	185	13,01%	185	13,49%	11	6,32%
Total	1157	4,85 %	1174	4,78 %	1139	4,49%	1085	4,19%	-72	-6,22%

Category II pupils are admitted under the terms of agreements entered into between the Schools and certain organisations and companies. By virtue of these agreements, a fee is paid for each pupil thus admitted which is equivalent to the actual cost to the school's budget of the education provided.

This category of pupils currently accounts for **4.19%** of the total pupil population.

Category II pupils account for **23.12%** of the pupil population of the Karlsruhe School and **13.49%** of that of Varese.

Pupil population from 2012 to 2015: Category III population

Schools	2012		2013		2014		2015		Difference between 2012 and 2015	
	Population	%	Population	%	Population	%	Population	%	Population	%
Alicante	474	45,06 %	435	41,75 %	392	38,93%	356	36,32%	-118	-24,89%
Bergen	447	80,40 %	441	78,05 %	420	76,09%	413	76,90%	-34	-7,61%
Brussels I	181	5,95 %	197	6,39 %	123	3,75%	83	2,44%	-98	-54,14%
Brussels II	104	3,31 %	87	2,83 %	77	2,60%	64	2,13%	-40	-38,46%
Brussels III	95	3,28 %	90	3,14 %	86	2,96%	71	2,37%	-24	-25,26%
Brussels IV	22	1,44 %	27	1,40 %	42	1,86%	50	2,00%	28	127,27%
Culham	578	84,75 %	516	86,00 %	469	87,34%	402	87,58%	-176	-30,45%
Frankfurt	260	21,83 %	235	18,85 %	217	15,24%	179	12,32%	-81	-31,15%
Karlsruhe	484	53,13 %	498	53,84 %	461	53,42%	458	56,33%	-26	-5,37%
Luxembourg I	314	11,57 %	352	12,63 %	420	14,13%	484	15,70%	170	54,14%
Luxembourg II	352	17,91 %	387	18,42 %	429	19,13%	487	20,74%	135	38,35%
Mol	593	79,70 %	573	77,64 %	552	76,35%	561	77,70%	-32	-5,40%
Munich	329	15,95 %	339	15,53 %	319	14,26%	292	12,91%	-37	-11,25%
Varese	462	33,38 %	432	30,92 %	416	29,25%	388	28,30%	-74	-16,02%
Total	4695	19,67 %	4609	18,78 %	4423	17,42%	4288	16,55%	-407	-8,67%

Category III pupils are pupils whose parents are required to pay school fees.

They currently account for **16.55%** of the pupils of the European Schools.

3. Pupil population by nationality

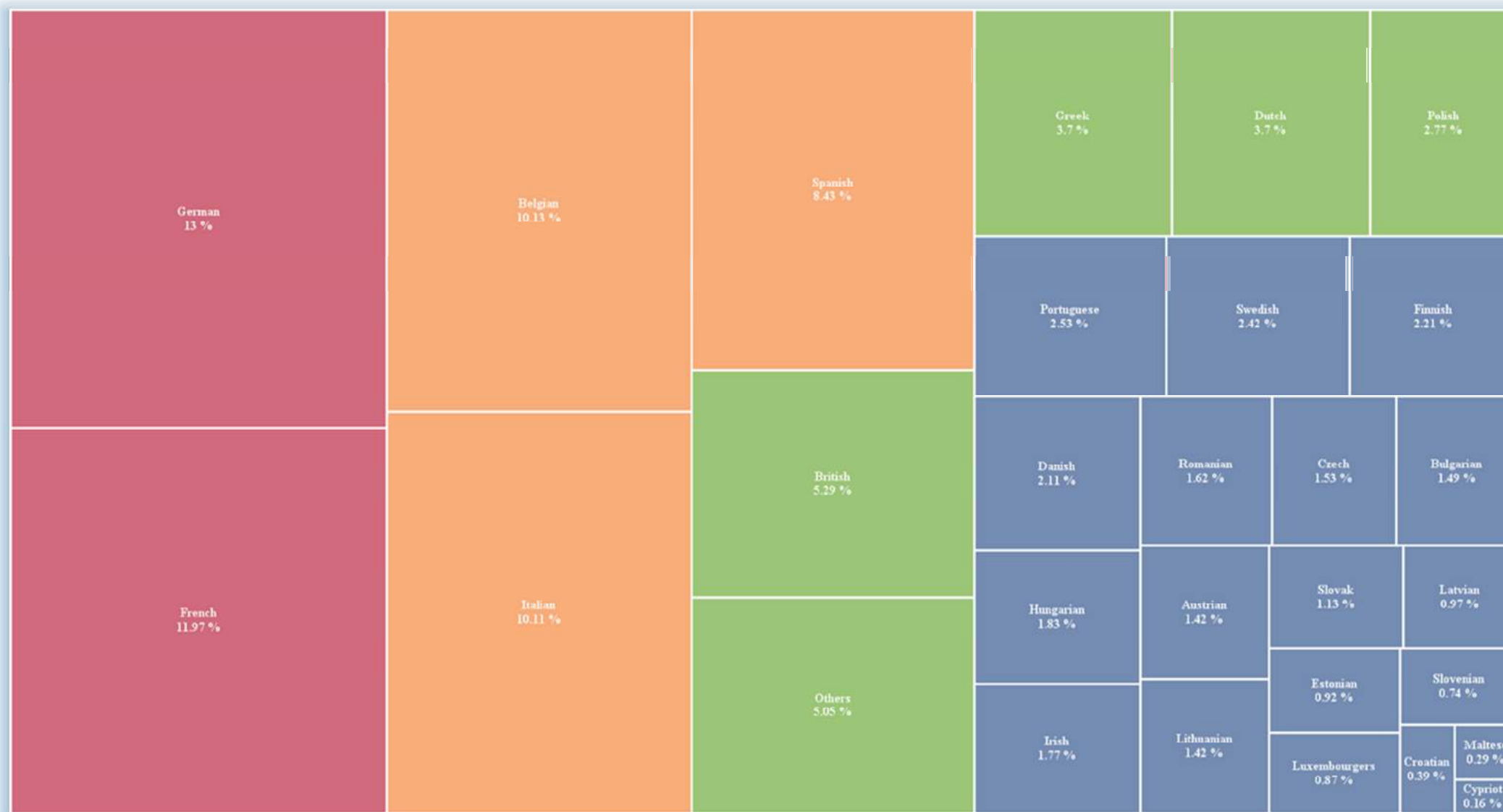
The table below shows the numbers of pupils coming from each of the Member States and the percentage of total pupil numbers accounted for by pupils from each Member State. It should be noted that details of those pupils who are national of countries other than the Member States are not given, although the number and percentage of such pupils are indicated at the bottom of the table. Hence, the total numbers correspond to the figures shown in the previous tables.

It should be noted that the figures in this table are not 'round numbers'. A large number of pupils enrolled in the European Schools have more than one nationality. Pupils with dual nationality or more are calculated as shares: dual nationality as 0.5+0.5, triple nationality as 0.33+0.33+0.33).

Pupil population by nationality Member States of the European Union

Total number of nationalities: 120

Nationality	Population	%
Austrian	368	1,42%
Belgian	2624,42	10,13%
British	1371,33	5,29%
Bulgarian	386,83	1,49%
Croatian	101,83	0,39%
Cypriot	40,5	0,16%
Czech	395,83	1,53%
Danish	546,33	2,11%
Dutch	959	3,70%
Estonian	238	0,92%
Finnish	573,5	2,21%
French	3101,75	11,97%
German	3366,67	13,00%
Greek	959,17	3,70%
Hungarian	473,08	1,83%
Irish	457,67	1,77%
Italian	2618,75	10,11%
Latvian	250,83	0,97%
Lithuanian	367,83	1,42%
Luxembourg	224,83	0,87%
Maltese	74,5	0,29%
Polish	718,5	2,77%
Portuguese	656	2,53%
Romanian	420	1,62%
Slovakian	292,67	1,13%
Slovenian	192,33	0,74%
Spanish	2182,83	8,43%
Swedish	627,25	2,42%
OTHERS	1312,75	5,05%
TOTAL	25903	



Pupil population by nationality and by school
Member States of the European Union – 2015-2016

	Alicante	Bergen	Brussels I	Brussels II	Brussels III	Brussels IV	Culham	Frankfurt	Karlsruhe	Luxembourg I	Luxembourg II	Mol	Munich	Varese	TOTAL
Austrian	3,5	1	50	55	62	56	1	13,33	8	23,5	17	6,5	49,17	22	368
Belgian	45	18,5	403,33	349,83	412,67	638,25	17,5	44,83	9,33	201,67	143,83	219,17	56	64,5	2624,42
British	65,33	35	132,67	99,25	142,42	104,67	156,33	94,67	44	172,5	99,5	26,17	105,5	93,33	1371,33
Bulgarian	10	1	42,83	13,33	12,17	123,5	2	15,5	5,5	119,5	4,5	8	16	13	386,83
Croatian			16		1,33	51		1	1	5	22		1	3,5	101,83
Cyprus			1	2,5	27,5	3		0,5		1	3,5		1	0,5	40,5
Czech	5,5	4,5	10,33	9,17	219,67	18,83	1,5	6	7	6	86,83	6,5	5	9	395,83
Danish	9,5	4	225,83	11	9	9,67	10	13	6	22,83	190	3,5	23,50	8,5	546,33
Dutch	24	192,33	26,5	83,5	112,83	33,67	15,5	46,5	13	148,5	10,33	103,33	81	68	958,99
Estonian	2,5		3	147,5		2		2,5		68	2	3,5	5,5	1,5	238
Finnish	4,5	5,5	13	317	7	8,17	1	18,5	3	157,83	7,5	5,5	14,5	10,5	573,5
French	77,83	59,83	465,83	210,08	331,58	352,17	110,33	123,25	99,83	409,5	377,33	72,67	299,5	112,0	3101,75
German	95	26,83	287,17	240,5	269,17	205,42	88,5	417,08	379,17	253,33	157,17	32,5	770,5	144,33	3366,67
Greek	11	10	34	20,5	467,17	29,17		41,83	13,5	24,5	174	7,5	90	36	959,17
Hungarian	6	3	225,67	14,83	18,08	15		22	10	15	99,5	1,5	19	23,5	473,08
Irish	16,83	6,5	52	42,5	77,83	74	2	37,5	6	37,33	28,83	16,5	36	23,83	457,67
Italian	32,17	24,33	396	300,67	77,58	301,17	26	200,67	30	99,67	383	22	284,5	441	2618,75
Latvian	3,5		3,5	144	5	6,5		6,33	1	73,5	1,5		3,5	2,5	250,83
Lithuanian	7,5	4	4,5	189,33	3	3,5		11,5	0,5	125	4	1	3	11	367,83
Luxembourg	4	1	5,5	8	5,5	7		4	1	89	90,83		8,5	0,5	224,83
Maltese			45,5	2,5	0,5	1,5		1,5		7,5	13,5			2	74,5
Polish	10,5	5	337,17	26,5	21,17	28,17	3,5	33	4,5	185,83	12,33	9,5	24,83	16,5	718,5
Portuguese	9,5	4	14,17	274,83	21	19	4,5	60	2	179	19,5	1,5	21	26	656
Romanian	3	6,5	35	13,17	10,5	201,67	2	4,33	12	11,83	72	0,5	35	12,5	420
Slovakian	6	4	3	2,5	170,67	3		10		10	63,0	3,0	9	8,5	292,67
Slovenian	1	5	82,5	1,5	1,83	5,5		14		7	68,5		4,5	1	192,33
Spanish	486,83	27,5	354,5	65,33	423,83	94	6,5	133,67	15	293,33	36,5	18,83	158,5	68,5	2182,83
Swedish	8	5	32,5	280,25	12,33	15,5	0,5	16,5	3,33	184,33	6	10,5	32	20,5	627,25
OTHERS	31,5	82,67	91	72,92	65,67	87	10,33	58,5	138,33	149	153,5	142,33	103,5	126,5	1312,75
TOTAL	980	537	3394	2998	2989	2498	459	1452	813	3081	2348	722	2261	1371	25903

4. Pupil population by teaching level

Population by teaching level from 2012 to 2015

Schools	Cycle	2012		2013		2014		2015		Difference between 2012 and 2015	
		Population	%	Population	%	Population	%	Population	%	Population	%
Alicante	Nursery	117	0,00%	117	0,00%	102	-12,82%	96	-5,88%	-21	-17,95%
	Primary	383	6,09%	370	-3,39%	369	-0,27%	363	-1,63%	-20	-5,22%
	Secondary	552	0,55%	555	0,54%	536	-3,42%	521	-2,80%	-31	-5,62%
Total Alicante		1052	2,43%	1042	-0,95%	1007	-3,36%	980	-2,68%	-72	-6,84%
Bergen	Nursery	38	-29,63%	46	21,05%	54	17,39%	51	-5,56%	13	34,21%
	Primary	205	0,00%	210	2,43%	192	-8,57%	175	-8,85%	-30	-14,63%
	Secondary	313	-2,80%	309	-1,27%	306	-0,97%	311	1,63%	-2	-0,64%
Total Bergen		556	-4,30%	565	1,61%	552	-2,30%	537	-2,72%	-19	-3,42%
Brussels I	Nursery	239	-10,15%	276	15,48%	339	22,83%	343	1,18%	104	43,51%
	Primary	993	-6,59%	1083	9,06%	1184	9,33%	1228	3,72%	235	23,67%
	Secondary	1808	0,33%	1724	-4,64%	1755	1,80%	1823	3,87%	15	0,83%
Total Brussels I		3040	-2,91%	3083	1,41%	3278	6,33%	3394	3,54%	354	11,64%
Brussels II	Nursery	282	-4,41%	261	-7,44%	268	2,68%	291	8,58%	9	3,19%
	Primary	1127	-5,21%	1097	-2,66%	1035	-5,65%	1090	5,31%	-37	-3,28%
	Secondary	1735	2,54%	1720	-0,86%	1655	-3,78%	1617	-2,30%	-118	-6,80%
Total Brussels II		3144	-1,01%	3078	-2,09%	2958	-3,90%	2998	1,35%	-146	-4,64%
Brussels III	Nursery	283	8,43%	293	3,53%	297	1,37%	317	6,73%	34	12,01%
	Primary	947	1,61%	964	1,79%	1025	6,33%	1077	5,07%	130	13,73%
	Secondary	1662	-3,71%	1613	-2,94%	1584	-1,80%	1595	0,69%	-67	-4,03%
Total Brussels III		2892	-0,92%	2870	-0,76%	2906	1,25%	2989	2,86%	97	3,35%
Brussels IV	Nursery	244	22,61%	264	8,19%	297	12,50%	281	-5,39%	37	15,16%
	Primary	866	28,68%	965	11,43%	1015	5,18%	1063	4,73%	197	22,75%
	Secondary	420	124,60%	703	67,38%	951	35,28%	1154	21,35%	734	174,76%
Total Brussels IV		1530	44,48%	1932	26,27%	2263	17,13%	2498	10,38%	968	63,27%
Culham	Nursery										
	Primary	242	-17,41%	182	-24,79%	132	-27,47%	62	-53,03%	-180	-74,38%
	Secondary	440	-2,65%	418	-5,00%	405	-3,11%	397	-1,98%	-43	-9,77%
Total Culham		682	-8,46%	600	-12,02%	537	-10,50%	459	-14,53%	-223	-32,70%
Frankfurt	Nursery	165	10,74%	160	-3,03%	183	14,38%	168	-8,20%	3	1,82%
	Primary	461	3,83%	506	9,76%	585	15,61%	621	6,15%	160	34,71%
	Secondary	565	4,05%	581	2,83%	656	12,91%	663	1,07%	98	17,35%
Total Frankfurt		1191	4,84%	1247	104,70%	1424	14,19%	1452	1,97%	261	21,91%
Karlsruhe	Nursery	89	-11,00%	92	3,37%	77	-16,30%	77	0,00%	-12	-13,48%
	Primary	301	-3,53%	311	3,32%	299	-3,86%	298	-0,33%	-3	-1,00%
	Secondary	521	-0,19%	522	0,19%	487	-6,70%	438	-10,06%	-83	-15,93%
Total Karlsruhe		911	-2,46%	925	1,53%	863	-6,70%	813	-5,79%	-98	-10,76%
Luxemb. I	Nursery	413	10,43%	382	-7,50%	448	17,28%	461	2,90%	48	11,62%
	Primary	949	2,04%	1042	9,79%	1138	9,21%	1226	7,73%	277	29,19%
	Secondary	1353	-40,53%	1362	0,66%	1386	1,76%	1394	0,58%	41	3,03%
Total Luxembourg I		2715	-24,14%	2786	2,61%	2972	6,68%	3081	3,67%	366	13,48%
Luxemb. II	Nursery	238	-3,64%	270	13,44%	299	10,74%	307	2,68%	69	28,99%
	Primary	708	-0,28%	773	9,18%	842	8,93%	916	8,79%	208	29,38%
	Secondary	1019		1058	3,82%	1102	4,16%	1125	2,09%	106	10,40%
Total Luxembourg II		1965	105,33%	2101	6,92%	2243	6,76%	2348	4,68%	383	19,49%
Mol	Nursery	62	-15,07%	76	22,58%	77	1,32%	77	0,00%	15	24,19%
	Primary	252	2,86%	245	-2,77%	222	-9,39%	243	9,46%	-9	-3,57%
	Secondary	430	-4,23%	417	-3,02%	424	1,68%	402	-5,19%	-28	-6,51%
Total Mol		744	-3,00%	738	-8,00%	723	-2,03%	722	-0,14%	-22	-2,96%
Munich	Nursery	126	9,57%	136	7,93%	143	5,15%	131	-8,39%	5	3,97%
	Primary	894	2,05%	929	11,39%	913	-1,72%	894	-2,08%	0	0,00%
	Secondary	1043	4,40%	1118	7,19%	1181	5,64%	1236	4,66%	193	18,50%
Total Munich		2063	3,67%	2183	5,81%	2237	2,47%	2261	1,07%	198	9,60%
Varese	Nursery	111	-3,48%	113	10,78%	119	5,31%	110	-7,56%	-1	-0,90%
	Primary	528	-1,12%	515	-2,58%	527	2,33%	492	-6,64%	-36	-6,82%
	Secondary	745	3,91%	769	3,22%	776	0,91%	769	-0,90%	24	3,22%
Total Varese		1384	1,32%	1397	0,93%	1422	1,79%	1371	-3,59%	-13	-0,94%
Total	Nursery	2407	1,78%	2486	3,28%	2703	8,73%	2710	0,26%	303	12,59%
	Primary	8856	1,02%	9192	3,79%	9478	3,11%	9748	2,85%	892	10,07%
	Secondary	12606	3,03%	12869	2,08%	13204	2,60%	13445	1,83%	839	6,66%
		23869	2,15%	24547	2,84%	25385	3,41%	25903	2,04%	2034	8,52%

The table above shows, for each year under review, the number of pupils at each teaching level (Nursery, Primary and Secondary) in each school and in the system as a whole, as well as the percentage variation year on year since 2012.

The last two columns show the differences, in absolute and percentage terms, recorded for each teaching level in each school and in the system as a whole for the period since 2012.

5. Pupil population by language section

The table below shows the population of each of the language sections in each of the schools for the current school year, while the overall situation for the system as a whole is summarised in the accompanying chart below.

Language sections – 2015-2016 school year

Ecoles	BG	CS	DE	DA	EL	EN	ES	FI	FR	HU	IT	LT	NL	PL	PT	RO	SV	Total
Alicante			154			274	364		188									980
Bergen						226			95				216					537
Brussels I			330	250		492	333		1.113	222	327			327				3.394
Brussels II			289			414		348	710		258	125	204		303		347	2.998
Brussels III		214	319		499	420	426		840				271					2.989
Brussels IV	33		283			504			1.167		233		203			75		2.498
Culham			110			183			166									459
Frankfurt			487			558			199		208							1.452
Karlsruhe			371			279			163									813
Luxembourg I			367			559	340	172	805				246	189	185		218	3.081
Luxembourg II		67	262	218	188	453			754	58	348							2.348
Mol			48			292			137				245					722
Munich			1.046		49	316	109		390		256		95					2.261
Varese			208			431			201		433		98					1.371
Total	33	281	4.274	468	736	5.401	1.572	520	6.928	280	2.063	125	1.578	516	488	75	565	25.903

Broadly speaking, pupil numbers in the different language sections reflect the size of the population in question in Europe, but clearly the languages of those countries which are host countries to the schools and the EU institutions are particularly well represented in the schools.

The concentration of the institutions in cities (Brussels and Luxembourg) which are largely Francophone is reflected in the size of the Francophone sections. The Francophone section accounts for **almost a third** of the total number of pupils on roll at the Brussels I School and for almost **47%** at the Brussels IV School. All the schools have a Francophone section and an Anglophone and a German section, with the exception, in the case of the latter, of Bergen.

The Anglophone sections have the highest percentage of SWALS.

SWALS (Students Without A Language Section)

SWALS are those Categories I and II pupils whose mother tongue/dominant language is an official language of an EU Member State (with the exception of Irish and Maltese) but for whom no language section in their mother tongue/dominant language (L1) exists in their school.

If one of the language sections of the European Schools corresponding to a Category I or II pupil's mother tongue/dominant language is not open in the school, this pupil is entitled to tuition in his/her L1, working on the assumption that the School has at its disposal a duly qualified teacher, or can recruit one.

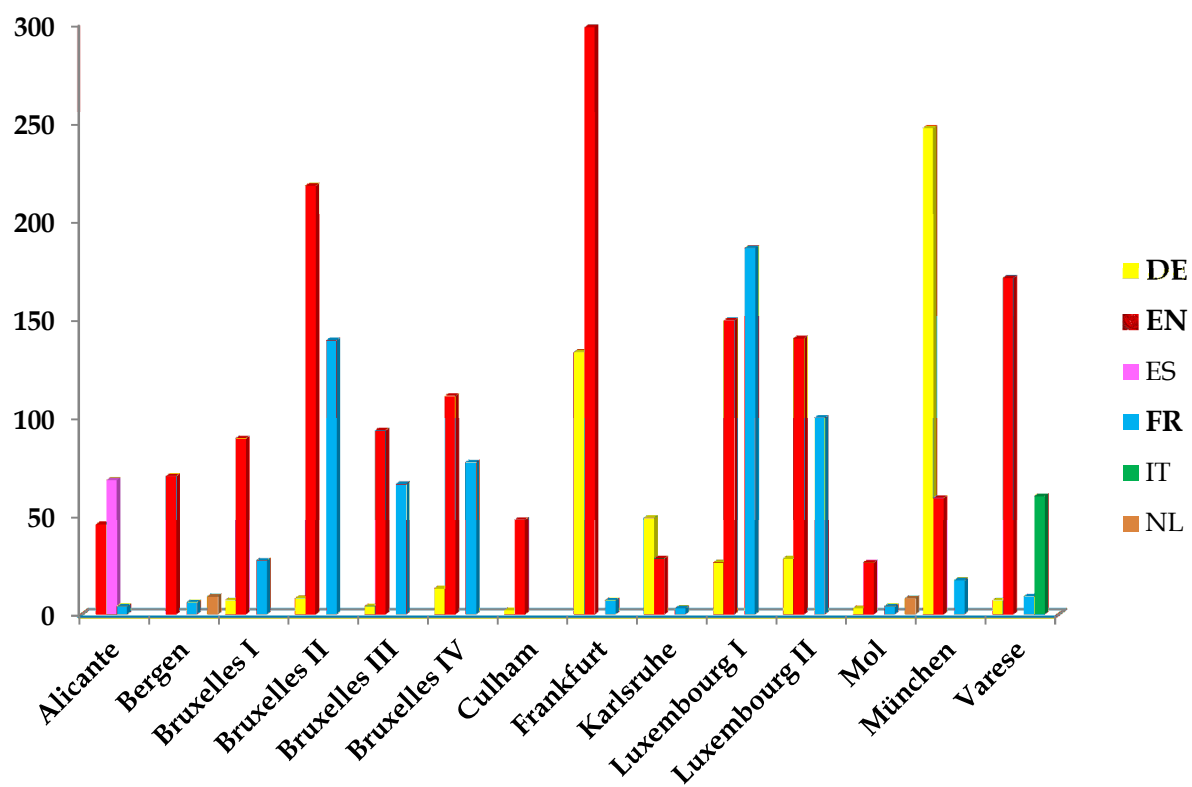
SWALS are normally enrolled in one of the working language (DE, EN, FR) sections. The language of the section is the pupil's L2. SWALS can also be enrolled in the language section of the host country on condition that no additional costs are created. Their L2 must be English, French or German.

SWALS are entitled to receive educational support when lack of knowledge of the language of the section in which they are enrolled is a barrier to communication, integration and learning. This support focuses on the acquisition of this language and thus facilitates SWALS' access to the curriculum.

Since 1 September 2011, Category III pupils have learned as L1 the language of the section in which they are enrolled. Category III pupils who were enrolled before 1 September 2011 and who learned as L1 a language different from that of the section can continue with the same L1 up to the end of their schooling in order to ensure pedagogical continuity.

Language of the L1 course	BG	CS	DA	DE	EL	ES	ET	FI	FR	HR	HU	IT	LT	LV	NL	PL	PT	RO	SK	SL	SV	TOTAL
Alicante			5		11		4	3			5	28	4		31	6	7		3	1	9	117
Bergen	1	3	2	14	1	19					3	13	4			3	1	7	2	5	7	85
Brussels I	23									5								7		88		123
Brussels II							156						64	145								365
Brussels III		12							1										150			163
Brussels IV	65			1						42								93				201
Culham			11			3						13			19		4					50
Frankfurt	19	6	10		34	130	2	14		1	18		11	3	62	28	56	4	4	12	24	438
Karlsruhe	1	3	4		12	17		4			8	15		1	2	4	4				5	80
Luxembourg I	105						64						123	68					1			361
Luxembourg II		25								19	34							63	59	68		268
Mol			2	1	3	9	3	2		1	2	10				4					4	41
Munich	8	7	16		64	90	4	9			17	11	1		3	16	26	10	6	5	30	323
Varese	12	7	9		31	64		15			18		8			16	30	9	9	1	18	247
Total	234	63	59	16	156	332	233	47	1	68	105	90	215	217	117	77	128	193	234	180	97	2862

LANGUAGE SECTION	DE	EN	ES	FR	IT	NL	TOTAL
Alicante		45	68	4			117
Bergen		70		6		9	85
Brussels I	7	89		27			123
Brussels II	8	218		139			365
Brussels III	4	93		66			163
Brussels IV	13	111		77			201
Culham	2	48					50
Frankfurt	133	298		7			438
Karlsruhe	49	28		3			80
Luxembourg I	26	149		186			361
Luxembourg II	28	140		100			268
Mol	3	26		4		8	41
Munich	247	59		17			323
Varese	7	171		9	60		247
TOTAL	527	1545	68	645	60	17	2862



Pupil population by language section, category and cycle for the 2015-2016 school year

This table shows the population of each language section in each school, broken down by pupil categories and by cycle, namely nursery, primary and secondary

Schools	Language section	bg	cs			de			da			el			en			es			fi			fr			hu			it			lt			nl			pl			pt			ro			sv			Total:
	Cycle	Category	1	1	3	1	2	3	1	2	3	1	2	3	1	2	3	1	2	3	1	2	3	1	2	3	1	2	3	1	3	1	2	3	1	2	3	1	2	3	1	1	2	3	1	1	2	3			
Alicante	nursery					12		7							19		5	22		15				15		1																							96		
	primary					35		28							68		25	81		49				68		9																							363		
	secondary					40		32							81		76	127		70				56		39																							521		
Alicante		Total:				87		67							168		106	230		134				139		49																							980		
Bergen	nursery														13		13						4		3								4		14													51			
	primary														27		51						8		19								15		55													175			
	secondary														38		84						5		56								10		118													311			
Bergen		Total:													78		148						17		78								29		187													537			
Culham	primary					2		9									26						1	1	23																							62			
	secondary					6	12	81							16	2	139						11	6	124																								397		
Culham		Total:				8	12	90							16	2	165						12	7	147																									459	
Brussels I	nursery					48			27						48			28					113			19	1	25	1							33													343		
	primary					111	1	1	89						131	1		98		2			407	3	2	92	2	113	5	3					166	1												1.228			
	secondary					155	3	11	129		5				293	6	13	198		7			561	8	19	106	1	1	159	6	15				126		1												1.823		
Brussels I		Total:				314	4	12	245		5				472	7	13	324		9			1.081	11	21	217	1	4	297	12	18					325	1	1											3.394		
Brussels II	nursery					26									47					25			59		1			24			27		12					35				35						291			
	primary					93	3	2							122	2	3			130	1		248	3	3		75	3	2	87	1	54	2			105		2			147		2					1.090			
	secondary					160	2	3							218	13	9			191	1		367	17	12		137	5	12	10		124	5	7			153	3	5			161	2					1.617			
Brussels II		Total:				279	5	5							387	15	12			346	2		674	20	16			236	8	14	124	1	190	7	7			293	3	7			343	2	2				2.998		
Brussels III	nursery					42		24					43		3	51			55				77									22																	317		
	primary					106		113	1				184	2	8	144	2	4	148		1		267	7	4							81	3	2															1.077		
	secondary					65	1	178	2	1			242	2	15	202	2	15	216	2	4		463	13	9							157	2	4															1.595		
Brussels III		Total:	213	1		315	3	1					469	4	26	397	4	19	419	2	5			807	20	13						260	5	6																2.989	
Brussels IV	nursery		11			45									36	1							125				20	1				15								27								281			
	primary		22			123	4	1							186	1	5						475	9	10		88	4	2			83	1	1					48									1.063			
	secondary					105	2	3							254	7	14						532	6	10		113	3	2			100	1	2														1.154			
Brussels IV		Total:	33			273	6	4							476	9	19						1.132	15	20			221	8	4			198	2	3						75								2.498		
Frankfurt	nursery					59		1							75		1						15				13		4																				168		
	primary					221	7	7							235		2						56	6	16		41	11	19																				621		
	secondary					164	6	22							222	3	20						53	25	28		42	19	59																				663		
Frankfurt		Total:				444	13	30							532	3	23						124	31	44			96	30	82																				1.452	

Schools	Language section		bg	cs	de			da			el			en			es			fi			fr			hu			it			lt			nl			pl			pt			ro			sv			
	Cycle	Category	1	1	3	1	2	3	1	2	3	1	2	3	1	2	3	1	2	3	1	2	3	1	2	3	1	3	1	2	3	1	2	3	1	2	3	1	1	2	3	Total:								
Karlsruhe	nursery					17	2	17							2	7	18						2	1	11																		77							
	primary					47	38	49							9	31	55						14	10	45																		298							
	secondary					53	39	109							13	52	92						10	8	62																		438							
Karlsruhe		Total:				117	79	175							24	90	165						26	19	118																		813							
Luxembourg 1	nursery					50		2							86	3	21	36		7	16	2	126		6						18		7	34	2	15	1	10		13	1	5	461							
	primary					135	1	11							151	5	50	112	3	23	48	2	9	329	4	15					51	9	25	81	3	10	48	2	16		51	5	27	1.226						
	secondary					129	2	37							201	2	40	124	10	25	86	1	8	303	5	17					76	14	46	44	3	12	69	3	21		78	8	30	1.394						
Luxembourg 1		Total:				314	3	50							438	10	111	272	13	55	150	3	19	758	9	38					145	23	78	159	6	24	132	6	47		142	14	62	3.081						
Luxembourg II	nursery			15	1	12		4	10	3	7	17	1	4	54	3	31						75	1	28	13	2	21	3	2													307							
	primary			46	5	57	7	30	40	5	25	58	4	15	114	10	27						220	13	70	42	1		84	25	18												916							
	secondary					92	9	51	72	23	33	65	7	17	152	27	35						279	22	46			130	29	36													1.125							
Luxembourg II		Total:	61	6	161	16	85	122	31	65	140	12	36	320	40	93							574	36	144	55	1	2	235	57	56													2.348						
Mol	nursery					6		6							11	1	15						5		9						8		16										77							
	primary					10		6							25	1	80						8		31						14		68										243							
	secondary					3		17							30	2	127						13		71						24		115										402							
Mol		Total:				19		29							66	4	222						26		111						46		199											722						
Munich	nursery					53	1								20	2	2	14	1	6			30	1	1																		131							
	primary					333	7	5			17		32	93	8	9	70	8	10				153	8	5			67	22	10		19	2	16									894							
	secondary					538	30	79						131	25	26						179	5	8			72	33	52		26	1	31										1236							
Munich		Total:				924	38	84			17		32	244	35	37	84	9	16									139	55	62		45	3	47										2261						
Varese	nursery					8	1	6							35	14	2						10	1	2			16	2	3		8	1	1									110							
	primary					33	1	36							106	49	16						42	8	31			97	14	30		15	3	11									492							
	secondary					60	1	62							114	47	48						63	2	42			167	37	67		24	4	31									769							
Varese		Total:				101	3	104							255	110	66											280	53	100		47	8	43										1.371						
GRAND TOTALS			bg	cs	de			da			el			en			es			fi			fr			hu			it			lt			nl			pl			pt			ro			sv			
			1	1	3	1	2	3	1	2	3	1	2	3	1	2	3	1	2	3	1	2	3	1	2	3	1	3	1	2	3	1	2	3	1	2	3	1	2	3	1	1	2	3	Total:					
Nursery			11	57	1	360	4	43	37	3	7	60	1	7	497	31	108	155	1	28	41	2	656	4	62	32	3	119	7	9	27		87	1	38	67	2	50		10	27	48	1	5	2.710					
Primary			22	152	5	1.313	70	185	129	5	25	259	6	55	1.411	110	353	509	11	85	178	3	9	2.296	72	283	134	1	2	565	84	84	87	1	332	20	178	247	4	10	153	18	48	198	5	29	9.748			
Secondary				65	1	1.683	108	508	201	23	38	307	9	32	1.965	188	738	665	12	106	277	2	8	2.895	117	543	106	1	1	820	132	243	10	541	27	354	170	3	13	222	9	26		239	10	30	13.445			
Total:			33	274	7	3.356	182	736	367	31	70	626	16	94	3.873	329	1.199	1.329	24	219	496	5	19	5.847	193	888	272	2	6	1.504	223	336	124	1	960	48	570	484	7	25	425	9	54	75	485	16	64	25.903		

II. CHOICES OF LANGUAGES

Choices of foreign languages – 2015-2016 School year

The three tables below give details of European School pupils' choices of language for study.

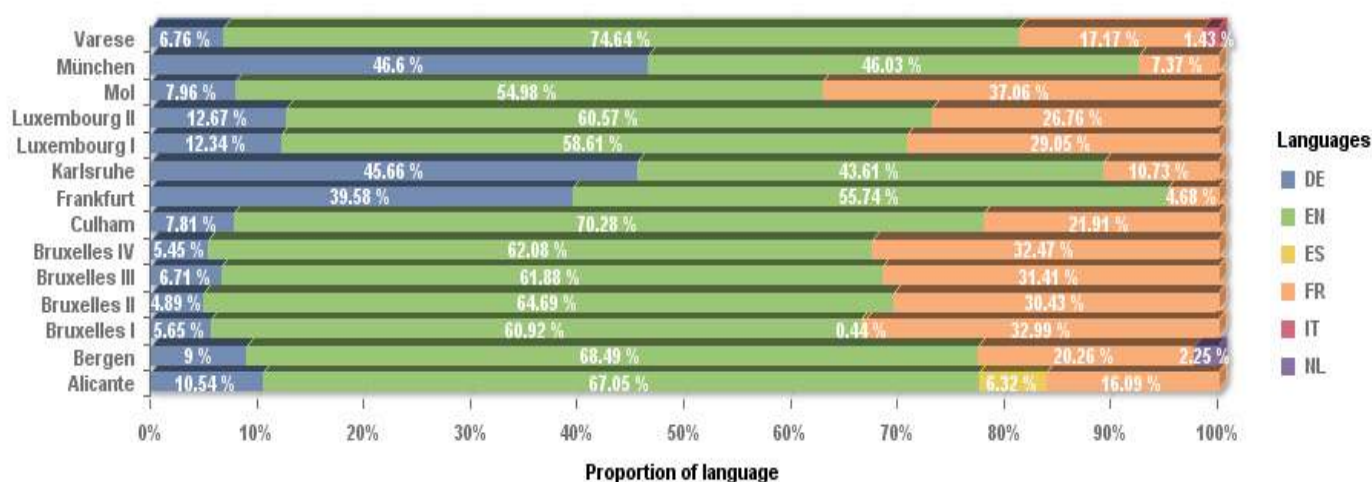
Language 2 is a pupil's first foreign language, which is studied from primary year 1 and is taken up to Baccalaureate level. It is the medium of instruction in a number of subjects in secondary school. Since 1 September 2014, Language 3 has been a compulsory subject from secondary years 1 to 5 and may be taken up to Baccalaureate level. Learning a Language 4 is an option and starts in secondary year 4. (Some schools also offer a Language 5 which pupils may take at beginner level as a complementary course forming part of the curriculum of secondary years 6 and 7).

The table 'Choice of language 2' shows the percentage of pupils choosing English, French and German as Language 2 in the current year. Pupils' range of choices of Language 2 is confined to English, French and German up to secondary year 5. In years 6 and 7, although one of these three languages must be the language of tuition for the study of certain subjects, the choice of a different Language 2 may be possible, conditional upon proven knowledge of the language in question. This is the most often the language of the school's host country.

1. Choice of Language 2

Schools	German	English	French	Other (as from secondary year 6)
Alicante	10,54 %	67,05 %	16,09 %	6,32 %
Bergen	9,00 %	68,49 %	20,26 %	2,25 %
Brussels I	5,65 %	60,92 %	32,99 %	0,44 %
Brussels II	4,89 %	64,69 %	30,43 %	
Brussels III	6,71 %	61,88 %	31,41 %	
Brussels IV	5,45 %	62,08 %	32,47 %	
Culham	7,81 %	70,28 %	21,91 %	
Frankfurt	39,58 %	55,74 %	4,68 %	
Karlsruhe	45,66 %	43,61 %	10,73 %	
Luxembourg I	12,34 %	58,61 %	29,05 %	
Luxembourg II	12,67 %	60,57 %	26,76 %	
Mol	7,96 %	54,98 %	37,06 %	
Munich	46,60 %	46,03 %	7,37 %	
Varese	6,76 %	74,64 %	17,17 %	1,43 %
Total	15,83%	60,68%	22,74%	

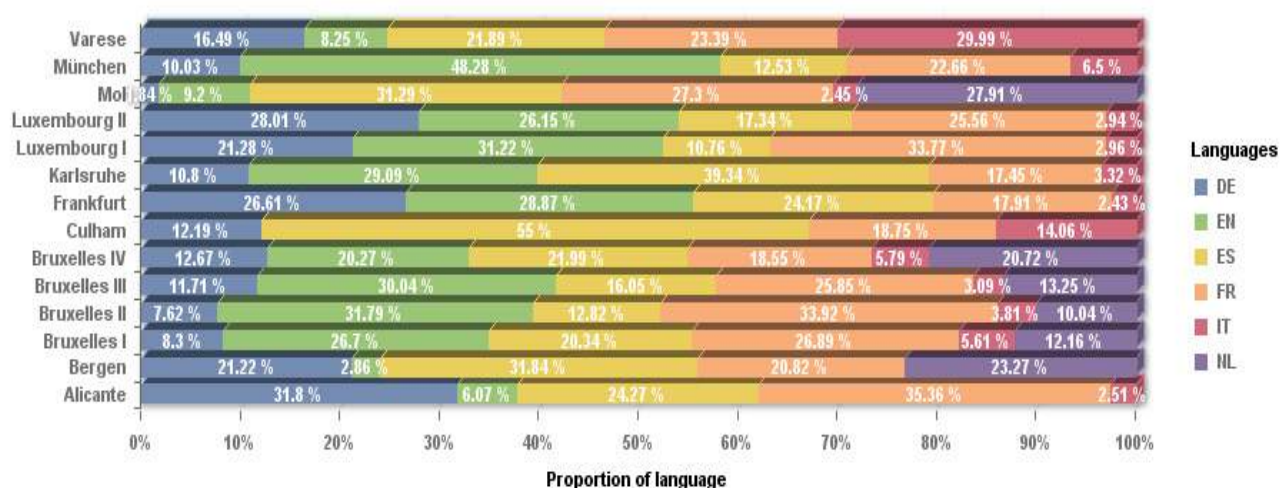
English clearly continues to be by far the most popular choice for Language 2, except in the schools of Karlsruhe and Munich where German is chosen by approximately half of the pupils enrolled in a language section other than the German section, or enrolled in the latter section as SWALS.



The three tables below show the most popular choices, in each school, of languages for study of Language 3 and Language 4 respectively.

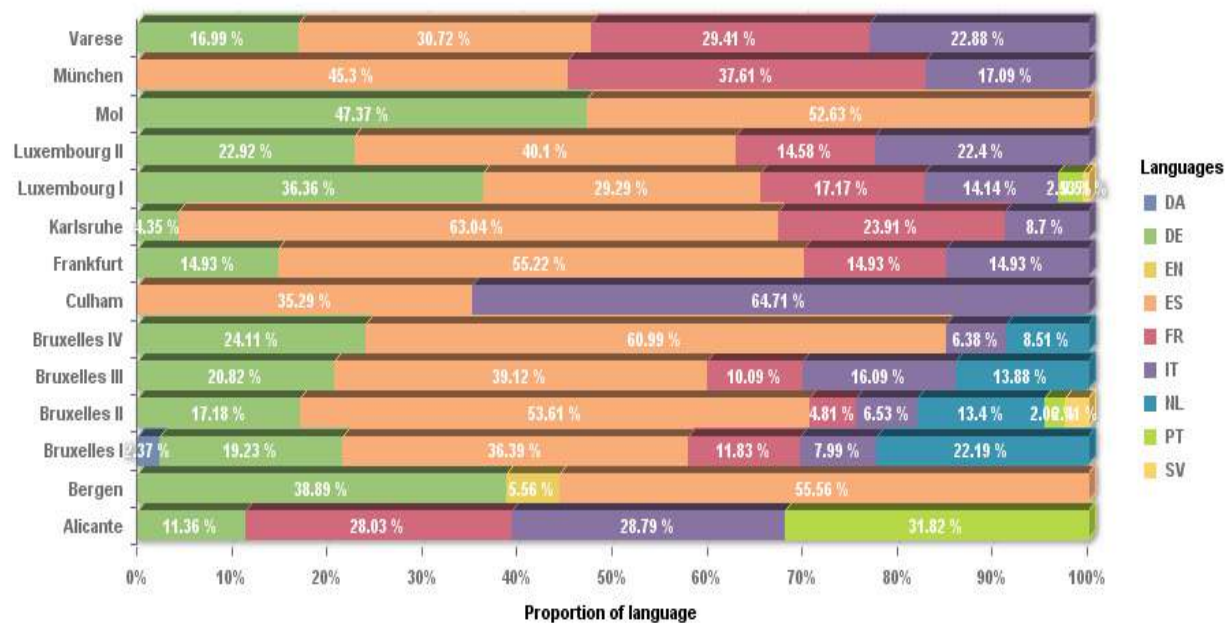
2. Choice of Language 3

Schools	Choice 1		Choice 2		Choice 3	
	Language	%	Language	%	Language	%
Alicante	French	35,36 %	German	31,80 %	Spanish	24,27 %
Bergen	Spanish	31,84 %	Dutch	23,27 %	German	21,22 %
Brussels I	French	26,89 %	English	26,70 %	Espagnol	20,34 %
Brussels II	Français	33,92 %	English	31,79 %	Spanish	12,82 %
Brussels III	English	30,04 %	French	25,85 %	Espagnol	16,05 %
Brussels IV	Spanish	21,99 %	Dutch	20,72 %	English	20,27 %
Culham	Spanish	55,00 %	French	18,75 %	Italian	14,06 %
Frankfurt	English	28,87 %	German	26,61 %	Spanish	24,17 %
Karlsruhe	Espagnol	39,34 %	English	29,09 %	Français	17,45 %
Luxembourg I	French	33,77 %	English	31,22 %	German	21,28 %
Luxembourg II	German	28,01 %	English	26,15 %	French	25,56 %
Mol	Spanish	31,29 %	Dutch	27,91 %	French	27,30 %
Munich	English	48,28 %	French	22,66 %	Spanish	12,53 %
Varese	Italian	29,99 %	French	23,39 %	Spanish	21,89 %



3. Choice of language 4

Schools	Choice 1		Choice 2		Choice 3	
	Language	%	Language	%	Language	%
Alicante	Portuguese	31,82%	Italian	28,79%	Français	28,03%
Bergen	Spanish	55,56%	German	38,89%	English	5,56%
Brussels I	Spanish	36,39%	Dutch	22,19%	German	19,23%
Brussels II	Spanish	53,61%	German	17,18%	Dutch	13,40%
Brussels III	Spanish	39,12%	German	20,82%	Italian	16,09%
Brussels IV	Spanish	60,99%	German	24,11%	Dutch	8,51%
Culham	Italian	64,71%	Spanish	35,29%		
Frankfurt	Spanish	55,22%	German	14,93%	Italian	14,93%
Karlsruhe	Spanish	63,04%	French	23,91%	Italian	8,70%
Luxembourg I	German	36,36%	Spanish	29,29%	French	17,17%
Luxembourg II	Spanish	40,10%	German	22,92%	Italian	22,40%
Mol	Spanish	52,63%	German	47,37		
Munich	Spanish	45,30%	French	37,61%	Italian	17,09%
Varese	Spanish	30,72%	French	29,41%	Italian	22,88%



III. DEVELOPMENT OF STAFF

1. Seconded staff per school

The table below shows, for each school, the number of staff seconded by each Member State to the system as a whole for the 2015-2016 school year.

	Nursery	Primary	Secondary			Executive Staff	Bursars	Office of the Secretary General of the European Schools	TOTAL
			Teachers	Advisers	Librarians				
Alicante	5	18	40	3		3	1		70
Bergen	2	10	25	2		3	1		43
Brussels I	9	54	113	9	1	3			189
Brussels II	9	51	106	9		3			178
Brussels III	9	44	100	5		3	1		162
Brussels IV	9	40	36	4		3	1		93
Culham		3	21	1		2			27
Frankfurt	3	20	42	4		3	1		73
Karlsruhe	3	14	32	2		3	1		55
Luxembourg I	10	51	86	4	1	3	1		156
Luxembourg II	11	37	61	6	1	3			119
Mol	2	13	34	3		3			55
Munich	2	34	69	4		3	1		113
Varese	4	22	55	4		3			88
OSG								7	7
TOTAL	78	411	820	60	3	41	8	7	1428

2. Seconded staff per Member State

The table below shows the number of staff seconded by each Member State to the system as a whole for the 2015-2016 school year.

Nationality	<u>Seconded staff:</u> Teachers	<u>Seconded staff:</u> Advisers	<u>Seconded staff:</u> Librarians	<u>Seconded staff:</u> Executive staff	<u>Seconded staff:</u> Bursars	<u>Seconded staff:</u> OSG	<u>TOTAL</u> <u>Seconded staff in</u> <u>post</u>	(%)
Austrian	23			3			26	1,81%
Belgian	155	33	1	2	2	1	194	13,57%
British	133			3			136	9,51%
Bulgarian	6	2					8	0,56%
Croatian								
Cypriot								
Czech	15			2			17	1,19%
Danish	30			1			31	2,16%
Dutch	70	2		3	1		76	5,31%
Estonian	4	1		3			8	0,56%
Finnish	28	1				1	30	2,09%
French	193	1		3			197	13,78%
German	230	8		3	3	1	245	17,14%
Greek	35	2	1	3		1	42	2,93%
Hungarian	14			1			15	1,05%
Irish	57			3			60	4,19%
Italian	100	5		3		1	109	7,62%
Latvian	3						3	0,21%
Lithuanian	9			1			10	0,70%
Luxembourg	14		1		1		16	1,12%
Maltese	4			1			5	0,35%
Polish	24	1		1			26	1,81%
Portuguese	28	1		1			30	2,09%
Romanian	4						4	0,20%
Slovakian	12						12	0,84%
Slovenian	4						4	0,28%
Spanish	81	3		3	1	2	90	6,30%
Swedish	33			1			34	2,37%
TOTAL	1309	60	3	41	8	7	1428	

3. Development of locally recruited teachers – 2012-2015

The table below gives for each year since 2012 a number of locally recruited teachers for each school. This number corresponds to full-time teacher equivalents, i.e. with a teaching load of 21 weekly periods in the secondary and 25.5 weekly hours in the primary.

Schools	2012	2013	2014	2015	Difference between 2012 and 2015	
	Locally recruited teachers	Locally recruited teachers	Locally recruited teachers	Locally recruited teachers	Locally recruited teachers	%
Alicante	21	24	23	31	10	47,62%
Bergen	21	21	22	25	4	19,05%
Brussels I	56	49	72	84	28	50,00%
Brussels II	55	75	69	71	16	29,09%
Brussels III	57	49	42	61	4	7,02%
Brussels IV	27	50	72	90	63	233,33%
Culham	28	28	28	28	0	0,00%
Frankfurt	42	47	63	57	15	35,71%
Karlsruhe	33	40	38	39	6	18,18%
Luxembourg I	69	75	73	84	15	21,74%
Luxembourg II	51	61	64	81	30	58,82%
Mol	17	16	17	22	5	29,41%
Munich	66	70	70	80	14	21,21%
Varese	45	53	54	72	27	60,00%
Total	588	658	707	825	237	40,30%

4. Seconded staff and locally recruited teachers (full-time equivalent) for the 2015-2016 school year

	Seconded teachers	Ed. Advisers/ Librarians	Executive staff	Total Seconded staff		Loc. recr. teachers Primary	Loc. recr. teachers Secondary	Loc. recr. teachers religion and ethics	Total Loc. recr. teachers		Total
Alicante	63	3	3	69	69%	10	19	2	31	31%	100
Bergen	37	2	3	42	63%	8	16	1	25	37%	67
Brussels I	176	10	3	189	69%	28	46	10	84	31%	273
Brussels II	166	9	3	178	71%	26	38	7	71	28%	249
Brussels III	153	5	3	161	73%	22	31	8	61	27%	222
Brussels IV	85	4	3	92	51%	26	57	7	90	49%	182
Culham	24	1	2	27	49%	2	24	2	28	51%	55
Frankfurt	65	4	3	72	56%	34	19	4	57	44%	129
Karlsruhe	49	2	3	54	58%	14	23	2	39	42%	93
Luxembourg I	147	5	3	155	65%	32	44	8	84	35%	239
Luxembourg II	109	7	3	119	60%	29	47	5	81	41%	200
Mol	49	3	3	55	71%	7	13	2	22	29%	77
Munich	105	4	3	112	58%	31	43	6	80	42%	192
Varese	81	4	3	88	55%	32	35	5	72	45%	160
Total	1309	63	41	1413	63%	301	455	69	825	37%	2238

The above table shows the total number of seconded staff in each school, i.e. the number of teachers, educational advisers, librarians and executive staff (Directors and Deputy Directors) seconded by the Member States for the 2015-2016 school year.

The table also gives a figure for the number of locally recruited teachers for each school. This number corresponds to the one mentioned in the table on page 21. However, it also gives a breakdown of primary and secondary locally recruited teachers and of religion/ethics locally recruited teachers.

5. Pupil to Educational Adviser ratio

The table below gives information about the pupil to educational adviser ratio in the secondary schools.

	2012		2013		2014		2015	
	Ed. Adv.	Pupils-Ed. Adv. ratio	Ed. Adv.	Pupils-Ed. Adv. ratio	Ed. Adv.	Pupils-Ed. Adv. ratio	Ed. Adv.	Pupils-Ed. Adv. Ratio
Alicante	3	184	3	185	3	178	3	173
Bergen	1	313	2	154	2	153	2	155
Brussels I	10	180	10	172	9	195	9	202
Brussels II	9	192	9	191	9	183	9	179
Brussels III	9	184	9	179	9	176	5	319
Brussels IV	2	210	2	351	4	237	4	288
Culham	1	440	1	418	1	405	1	397
Frankfurt	2	282	2	290	3	218	4	165
Karlsruhe	1	521	0	522	2	243	2	219
Luxembourg I	8	169	9	151	6	231	4	348
Luxembourg II	5	203	6	176	6	183	6	187
Mol	3	143	3	139	3	141	3	134
Munich	4	260	5	223	6	196	4	309
Varese	5	149	5	153	5	155	4	192
Total	63	200	66	194	68	194	60	224

6. Administrative and ancillary staff

The table below shows the number of posts of administrative and ancillary staff in each school and at the Office of the Secretary-General for the years 2012 to 2015 according to the organigrams appearing in the budgets. It also shows the percentage difference between the number of such staff members at the beginning and end of that period.

Number of posts of administrative and ancillary staff from 2012 to 2015 according to the organigrams appearing in the budgets					
Schools	2012	2013	2014	2015	Diff. 2012- 2015 (%)
Alicante	22,50	22,50	23,25	23,25	3,33
Bergen	15,50	15,25	14,50	14,50	-6,45
Brussels I	40,95	43,72	46,12	46,12	12,63
Brussels II	41,00	37,30	28,80	40,30	-1,71
Brussels III	38,75	38,75	38,75	39,75	2,58
Brussels IV	23,50	24,60	29,60	33,10	40,85
Culham	14,50	14,50	14,50	14,50	0,00
Frankfurt	19,00	19,50	19,50	21,50	13,16
Karlsruhe	21,90	21,90	21,90	21,90	0,00
<u>Luxembourg:</u>	69,30	82,48	86,48	92,93	34,10
Luxembourg I	42,30	42,30	44,80	49,30	16,55
Luxembourg II	27,00	40,18	41,68	43,63	61,59
Mol	20,00	20,11	16,61	19,11	-4,45
Munich	32,50	32,50	32,00	32,00	-1,54
Varese	30,43	30,43	27,43	27,43	-9,86
OSGES	39,50	39,50	47,50	47,50	20,25
TOTAL	429,33	443,04	446,94	473,89	10,38

Posts of nursery assistant are included in this table (2012: 67.01 – 2013: 66.8 – 2014: 69.06 – 2015: 66.8). The year on year variations in the number of AAS posts are due largely to posts of nursery assistant, which are created or discontinued according to the number of pupils in the nursery classes, in accordance with the relevant decisions of the Board of Governors.

The 23.95 posts of auxiliary staff are included in the above table.

IV. 2015 BACCALAUREATE RESULTS

The 56th session of the European Baccalaureate was chaired by European Baccalaureate President from Czech Republic, Mrs Ivana Bozdechova.

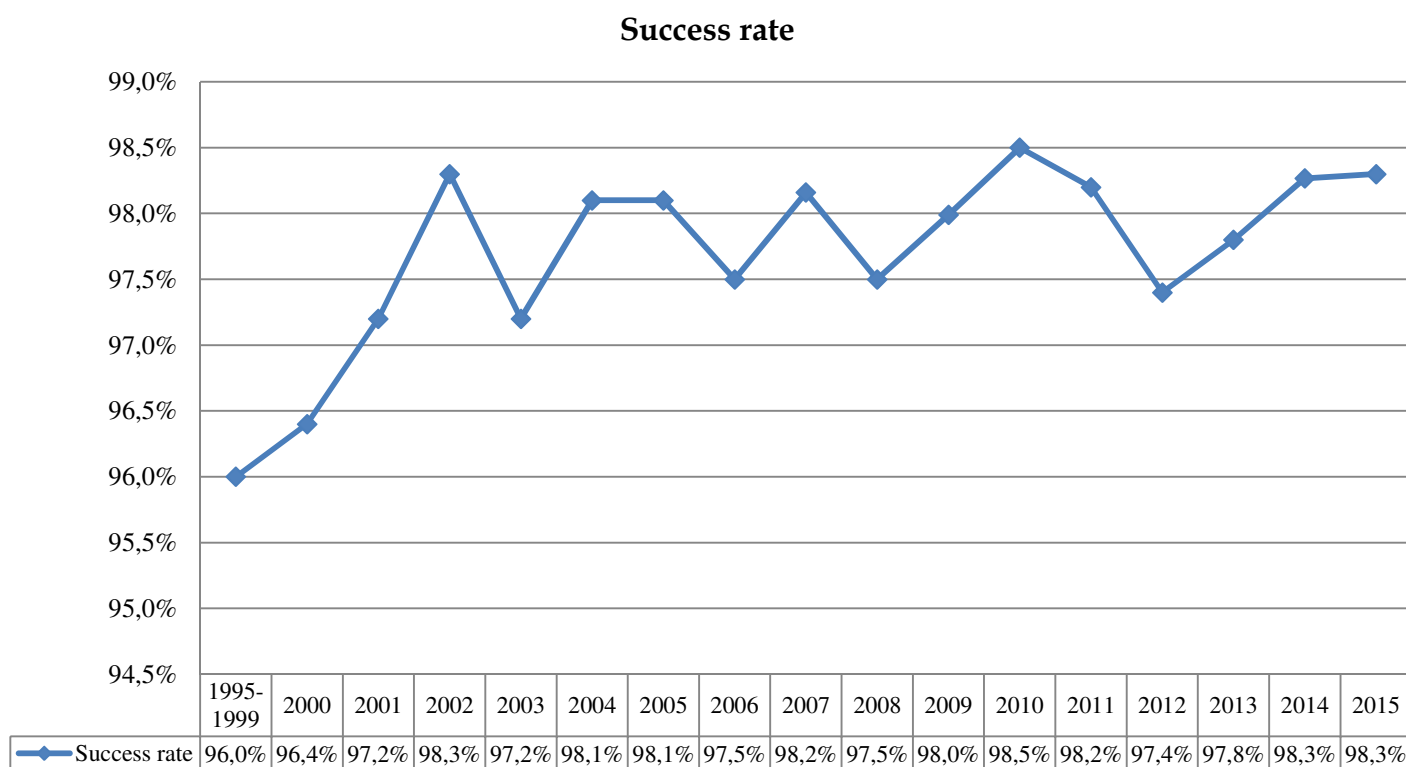
A total of 1814 candidates from 13 European Schools and 5 Accredited Schools registered for the European Baccalaureate 2015 session. 45 candidates were not awarded the European Baccalaureate Diploma: 15 candidates dropped out from the examinations session and 30 candidates failed.

During the written examinations 19 candidates were partially absent due to medical reasons and 7 due to participation in National Examinations, namely the Spanish *Selectividad*. 31 substitute examinations were organised in June 2015.

Two candidates were allowed to take part in an extraordinary session in September 2015, 3 substitute examinations were organised accordingly.

6 candidates chose to resit their Math 5 examination, this possibility was organised in 4 corresponding schools.

Global pass rate for 2015 Baccalaureate: 98.3%



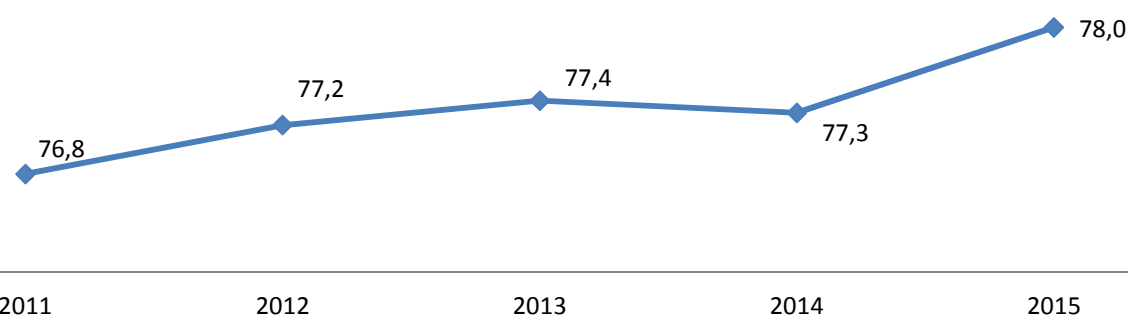
The following table shows the success rate in the different language sections. This year, the success rates by language section ranged between 97.1% and 100%. Due to small numbers of bachelors in some sections the results are not always statistically comparable.

Success rate by language section

Language section	Number of pupils	Passed	Success rate
DA	37	37	100.0%
DE	280	276	98.6%
EL	55	55	100.0%
EN	443	436	98.4%
ES	104	101	97.1%
FI	38	37	97.4%
FR	436	429	98.4%
HU	9	9	100.0%
IT	203	200	98.5%
NL	116	114	98.3%
PL	23	22	95.7%
PT	32	30	93.8%
SV	23	23	100.0%
Total	1799	1769	98.3%

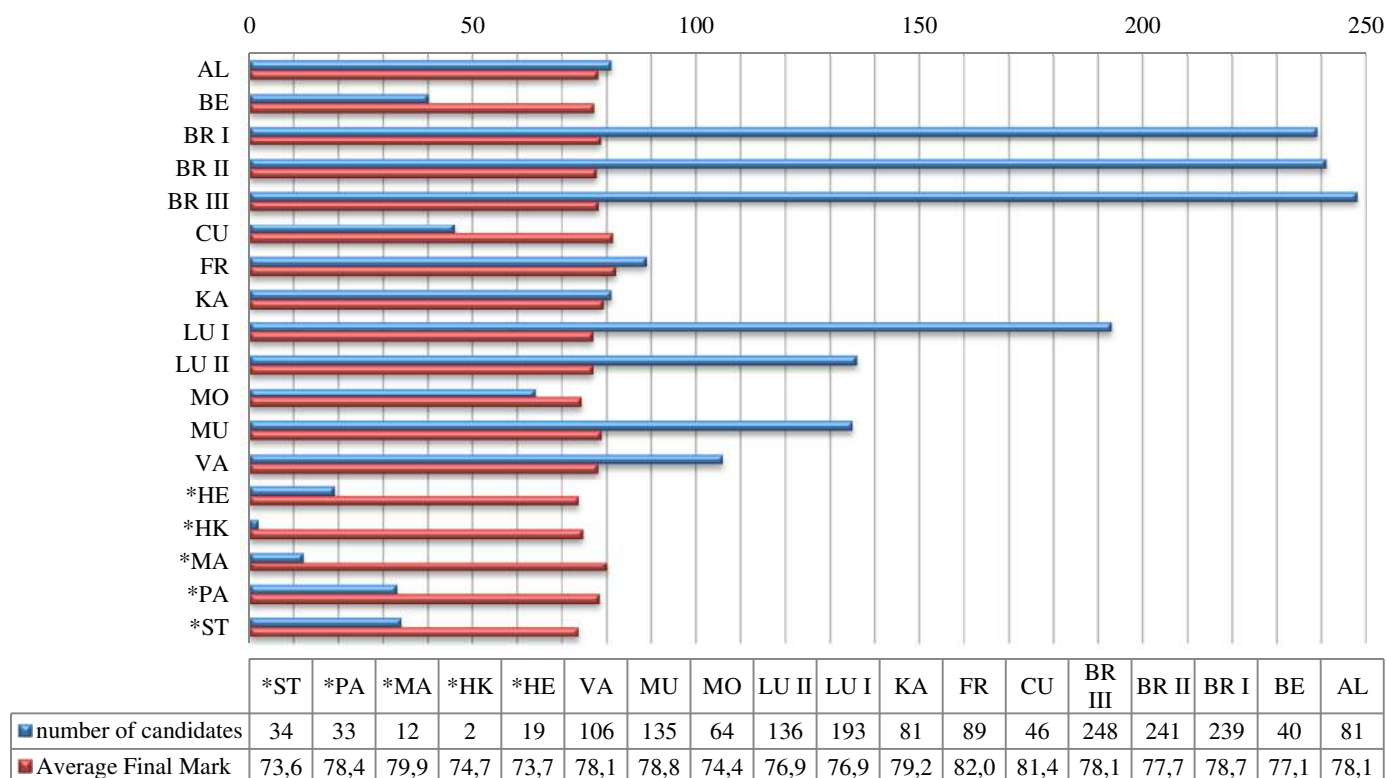
For all the candidates who participated in the 2015 session of the Baccalaureate, the average Final Marks amounted to 78.0. A comparison of the Final Marks shows a slight rise throughout the past five years.

Overall average of past five years



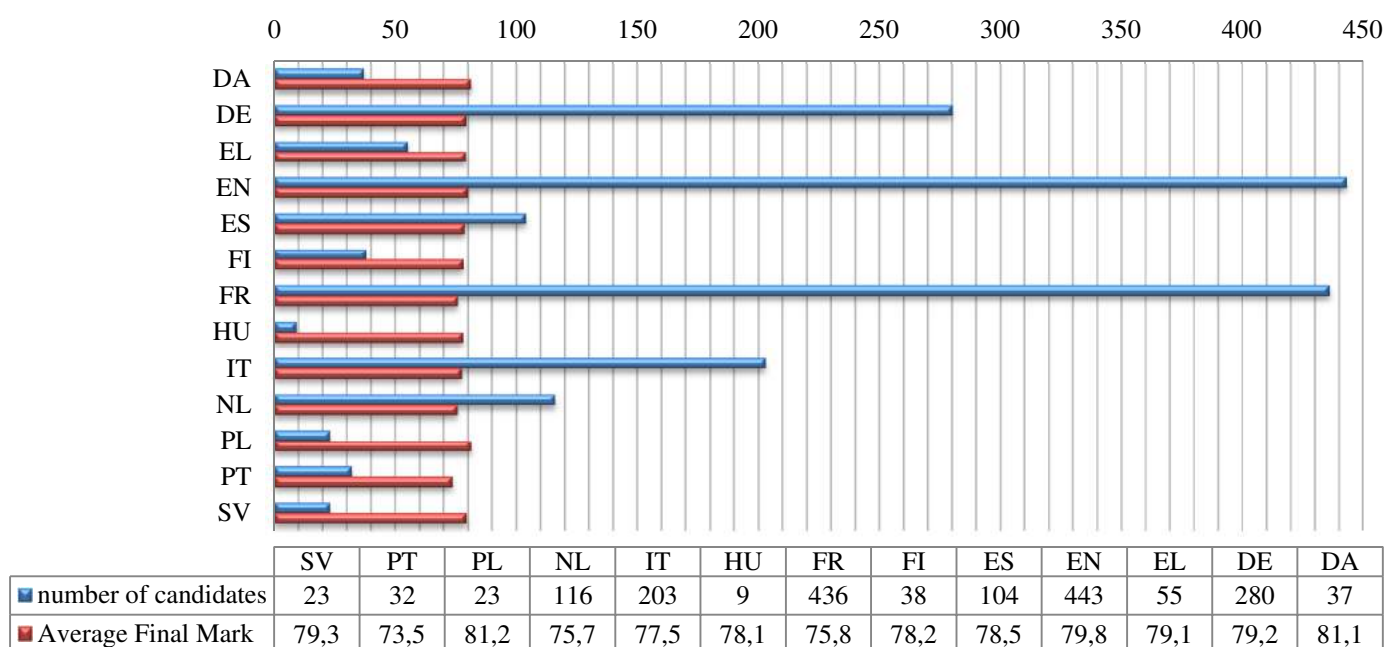
This year the average Final Mark ranged between 73.6 and 82.0 throughout schools:

Final Mark average per school



Throughout the Language Sections the average Final Mark ranged between 73.5 and 81.2. Small number of candidates in certain sections doesn't allow the average to be regarded as statistically significant.

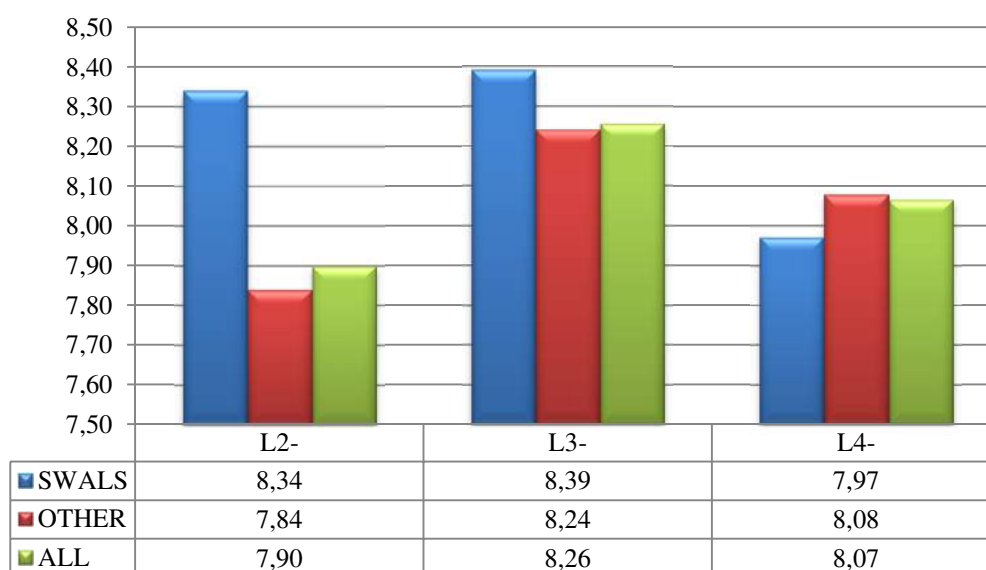
Final Mark average per language section



This year, 173 Students Without A Language Section registered for the European Baccalaureate session.

In the next graph we can see their performance in Languages II, III and IV. We can observe that their performance in Language II and III is higher than the average.

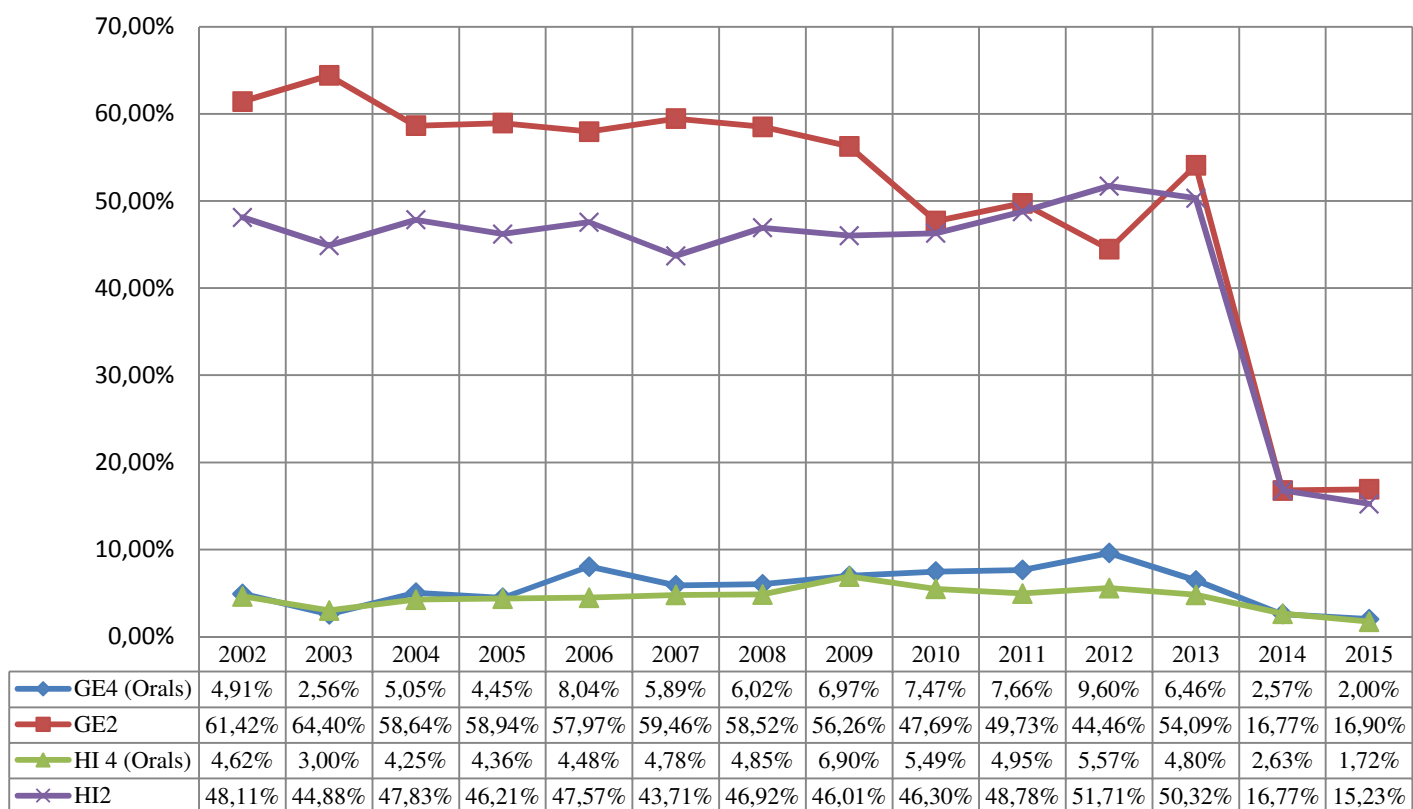
Final Mark for L2, L3 and L4



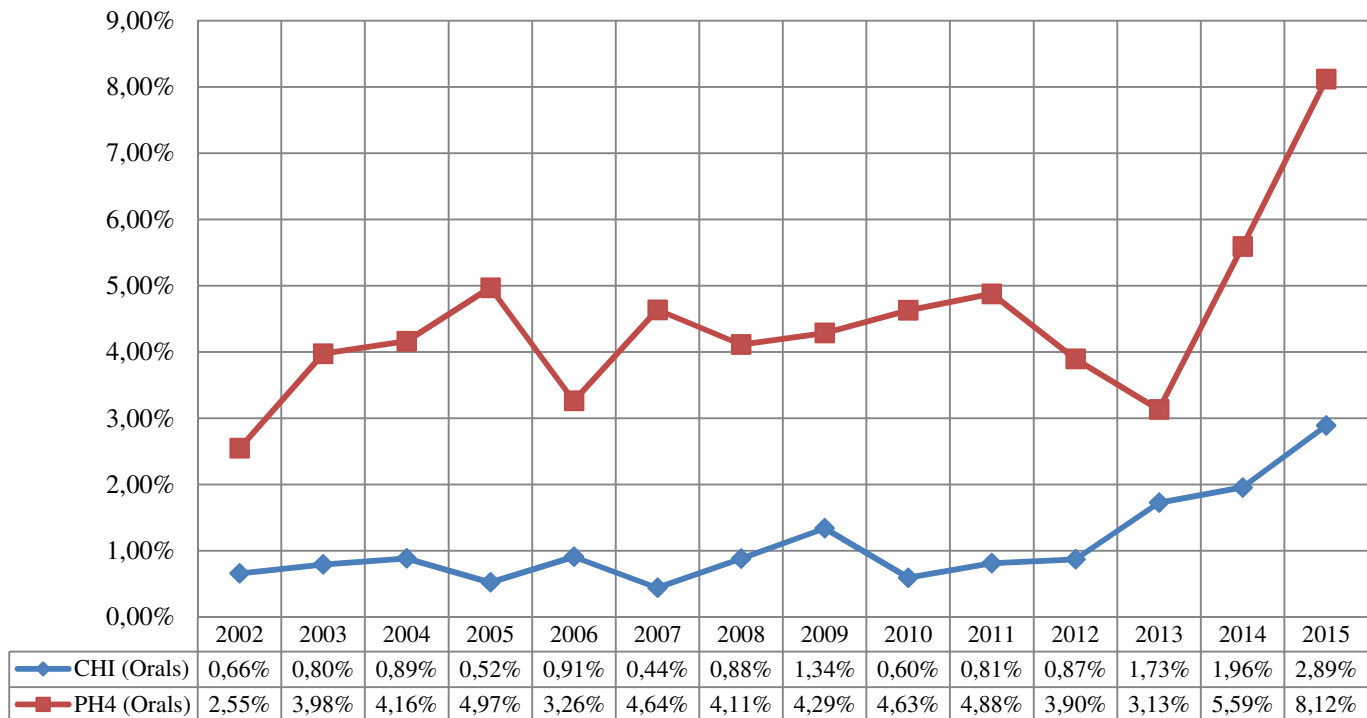
In the following table we can see the performance of SWALS pupils per subject compared to pupils in their language sections. As it can be observed there is no significant deviation of marks even for those subjects taught in Language II (in yellow) where one could expect that SWALS pupils would score higher.

Subject	bi4	chi	eco	ge4	hi4	ma3	ma5	maa	ph4	phy
SWALS	7.44	7.74	7.65	7.55	7.76	7.15	7.35	8.97	8.50	7.49
OTHER	7.47	7.55	7.34	7.54	7.57	6.86	7.47	8.23	8.10	7.41
ALL	7.46	7.57	7.37	7.54	7.60	6.89	7.46	8.28	8.14	7.42

The Baccalaureate reform entered into force in the school year 2013-2014. For the second year, all the candidates sat 5 written and only 3 oral examinations. The most affected choices were Orals in History and Geography, both 2 and 4 hour option courses, number of candidates choosing these examinations falling more than 64% in GE2, GE4 and HI2, and 54% in HI4:



Candidates choosing Philosophy 4 almost tripled in number (49 candidates in 2013 to 146 in 2015) and Chemistry orals doubled this year comparing to year 2013 (from 27 to 52):



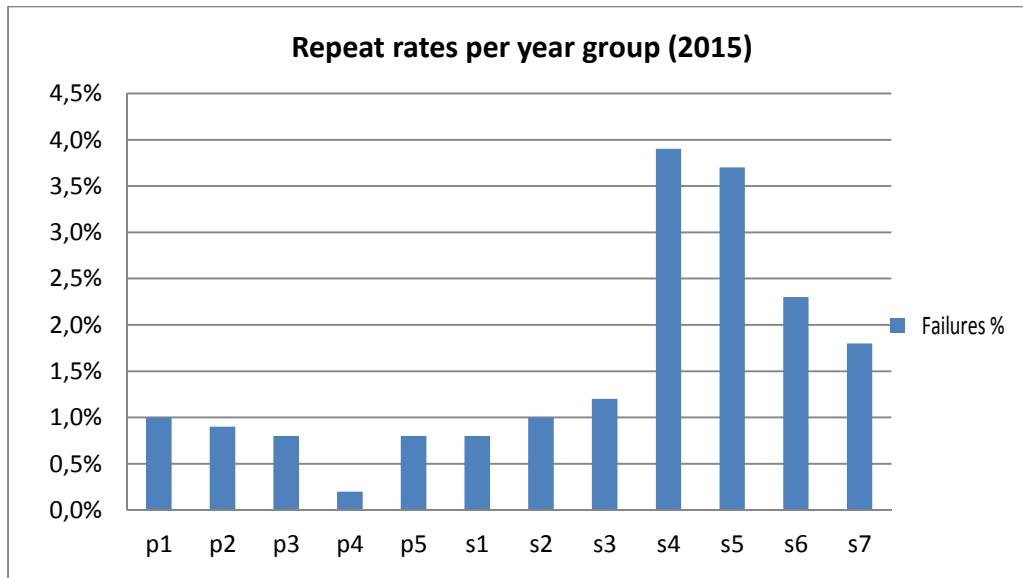
V. REPEAT RATES IN 2015

In 2014-2015, 25 385 primary and secondary pupils received an end-of-year school report. The table below shows the total number of pupils per year group for all 14 schools, the number of pupils repeating in relation to that total number and the percentage of repeats which that represents in relation to each year group, comparing the 2012-2013, 2013-2014 and 2014-2015 school years.

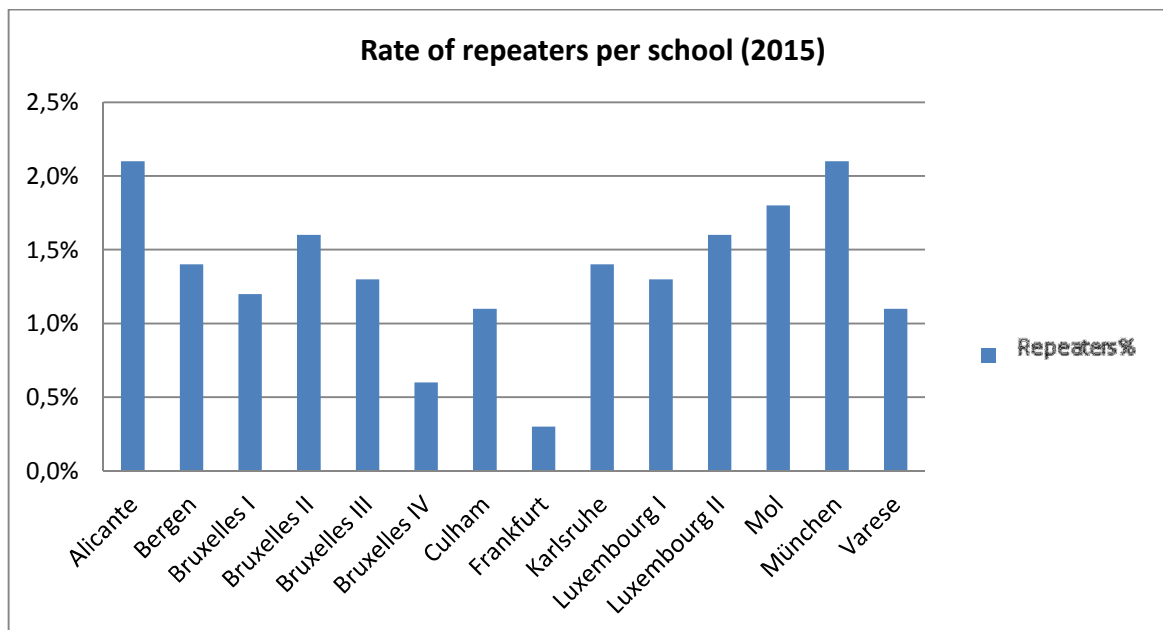
	2013			2014			2015		
Year	Pupils	Repeaters	Repeat rate	Pupils	Repeaters	Repeat rate	Pupils	Repeaters	Repeat rate
p1	1 701	6	0.4%	1 805	13	0.7%	1787	17	1.0%
p2	1 761	8	0.5%	1 792	14	0.8%	1918	17	0.9%
p3	1 748	3	0.2%	1 903	8	0.4%	1881	15	0.8%
p4	1 788	1	0.1%	1 839	9	0.5%	1979	3	0.2%
p5	1 787	5	0.3%	1 889	4	0.2%	1913	16	0.8%
s1	1 926	21	1.1%	1 918	15	0.8%	2010	17	0.8%
s2	1 937	26	1.3%	1 944	30	1.5%	2013	20	1.0%
s3	1 809	26	1.4%	1 901	39	2.1%	1957	23	1.2%
s4	1 819	57	3.1%	1 803	72	4.0%	1915	75	3.9%
s5	1 794	63	3.5%	1 784	87	4.9%	1823	67	3.7%
s6	1 754	32	1.8%	1 769	44	2.5%	1763	40	2.3%
s7	1 521	26	1.7%	1 714	33	1.9%	1720	31	1.8%
TOTAL	21 345	274	1.3%	24 635	423	1.7%	25385	341	1.3%

It can be observed from the table above that the average repeat rate for the 2014-2015 school year stands at 1.3 % (341 pupils). The rate was 1.3% for the 2012-2013 school year and for the 2013-2014 school year it was 1.7%.

The repeat rate is not uniform across the year groups. The following graph brings this variability clearly to light and also the year groups characterised by a higher repeat rate.



The table below shows the percentage rate of repeaters for each school as a whole, all sections taken together, and for the primary and secondary cycles combined.



It can be observed that for 2014-2015, the average repeat rate by school ranges between 0.6% and 2.1%. In 2012-2013, the same rate ranged between 0.3% and 1.8% and in 2013-2014 between 0.6% and 2.8%.

The table below shows the number of repeaters in relation to the total number of pupils in the secondary cycle and, amongst them, the number of pupils who left the European School system and the percentage which that represents in relation to the total number of pupils.

Secondary	Total number of pupils per year group (secondary)	Repeaters	Repeaters who left the European Schools	Percentage of repeaters who left the European Schools in relation to the total population in the year group	Percentage of repeaters who left the European Schools in relation to repeaters in the year group
s1	2010	17	8	0.4%	47%
s2	2013	20	3	0.1%	15%
s3	1957	23	7	0.4%	30%
s4	1915	75	21	1.1%	28%
s5	1823	67	24	1.3%	36%
s6	1763	40	10	0.6%	25%
s7	1720	31	2	0.1%	6%
Total	13201	273	75	0.6%	27%

Out of the 13 201 pupils enrolled in the secondary school, 273 were declared repeaters and 75 left the European School system, which corresponds to 0.6% of the pupils in the secondary. In 2012-2013 the figure was 0.7% and in 2013-2014 it was 0.8%

The percentage of repeaters at the end of the 2014-2015 school year remains appreciably lower than that recorded for previous years.

In the context of analysis of the statistics, the Pedagogical Development Unit was responsible for following up on repeat rates and for introducing the 19 measures to combat school failure approved by the Board of Governors at its December 2010 meeting. The schools were able to implement those measures as from the 2010-2011 school year.

In December 2010, the Board of Governors also revised several articles of the General Rules connected with Class Council meetings (Revision of Article 62 of the General Rules of the European Schools, 2010-D-189-en-4), bearing the following objectives in mind:

- Simplification of the rules as a whole through abolition of the system of promotion indices / weightings.
- Simplification of calculation of the average.
- Allowing the Class Council to take account to a greater extent of the 'student's interest'.
- Clarification of the appeal procedures.
- Harmonisation of the provisions of the rules applicable to the primary and secondary cycles.
- Clarification of certain key concepts such as 'new fact'

An initial report on follow-up on implementation was presented to the Board of Governors at its December 2011 meeting and was entitled: 'Follow-up on the report on the analysis of repeat rates and external evaluation of competences acquired by pupils of the European School system' (2011-09-D-50-en-3).

In that same context, the Board of Governors approved the changes made to old Article 60.3 (new Article 59) of the General Rules, which seek to give a more precise definition of the terminology of the A and B marks used for assessment purposes in the secondary cycle (years S4-S7).

A second report on school failures and repeat rates – 2013-01-D-56-en-3 – was presented to the Board of Governors at its April 2013 meeting. That report also contains a follow-up report at the schools' level on implementation of the 19 special measures to combat repeating adopted by the Board of Governors at its October 2009 meeting.

In 2013, the Board of Governors approved the amendments made to Article 61 of the General Rules, which are designed to give a more precise definition in the area of the decision-making power of Class Councils with respect to pupils' promotion at the end of the year.

It would seem that application of the 19 measures and amendment of the General Rules have had an effect on the overall repeat rate in the European Schools.

In the light of the above tables and figures, it was also noted that the highest repeat rate is still to be found in secondary years 4 and 5. Against that background, those years having been detected as recurrently the most critical, the phenomenon was examined in a third report on school failures and repeat rates – 2013-09-D-48-en-2 – which was submitted to the Joint Teaching Committee at its February 2014 meeting. In addition to the percentage of pupils repeating a year, that report mentions in particular, through its annexes, the repeat rate by subject, by section and by school in years S4 and S5.

In a fourth report – 2014-09-D-44-en-3 – presented to the Joint Teaching Committee at its February 2015 meeting, S6 was also analysed in terms of the failure rate by subject, by section and by school, on the same basis as for S4 and S5 in the previous report.

Data on the appeals lodged with Class Councils were also produced.

At its February meeting, the Joint Teaching Committee approved that fourth report. In order to produce a more finely honed analysis, the Joint Teaching Committee gave a mandate for the setting up of a Working Group, whose composition is as follows:

- The Deputy Secretary-General
- 2 Inspectors
- 1 Director
- 1 Deputy Director for the secondary cycle
- 1 Teachers' representative
- 1 Interparents representative
- 1 representative of the European Commission

This Working Group will attempt to analyse the statistics and to respond to the questions asked and requests made by the different members.

In October 2015, a fifth analysis report on repeat rates and school failures in S4, S5 and S6 – 2015-07-D-10-en-1 – was presented to the Joint Teaching Committee.

At its October meeting, the JTC also mandated the ‘Analysis of Repeat Rates’ Working Group to address the question of the inconsistencies noted in the ‘Harmonised Assessment and B tests at the end of secondary year 5’ document and to take over the mandate initially given to the ‘Assessment Secondary’ Working Group in June on the question of examination terminology and on the questions relating to ‘Examinations and tests leading to official marks in the secondary cycle’.

Annex 1: Cost sharing table 2015

Annex 1

PUPILS COMING FROM THE MEMBER STATES/SECONDED TEACHERS BY MEMBER STATE IN ALL SCHOOLS AUTUMN 2015 WITHOUT MUNICH												
A	B	C	E	E	F	G	H	I	J	K	L	M
Nationalities / Member States	Pupils with an EU nationality enrolled 15.10.2015	%	Seconded Staff in post per Member State in October 2015	% Staff out of a Member State	Staff share required in function of pupils	Language section coefficient	Target level	Difference	National average salary	Calculated contribution	Expected contribution in 2016 (25%)	OR expected seconded post contribution in 2016
AT	318,83	1,42	20	1,52	18,69	1,00	18,69	1,30	€ 40.284	€ 0	€ 0	0
BE	2.568,42	11,45	190	14,45	150,56	1,00	150,56	39,40	€ 51.683	€ 0	€ 0	0
BG	370,83	1,65	8	0,61	21,74	0,80	17,39	-9,40	€ 4.436	€ 41.698	€ 8.872	2
CY	39,50	0,18	0	0,00	2,32	0,80	1,85	-1,90	€ 42.323	€ 80.414	€ 0	0
CZ	390,83	1,74	16	1,22	22,91	0,80	18,33	-2,30	€ 13.135	€ 30.211	€ 13.135	1
DE	2.596,17	11,57	201	15,29	152,19	1,00	152,19	48,80	€ 53.860	€ 0	€ 0	0
DK	522,83	2,33	30	2,28	30,65	0,80	24,52	5,50	€ 53.730	€ 0	€ 0	0
EE	232,50	1,04	7	0,53	13,63	0,80	10,90	-3,90	€ 9.293	€ 36.243	€ 9.293	1
EL	889,17	3,87	38	2,89	50,95	0,80	40,76	-2,80	€ 19.713	€ 55.196	€ 19.713	1
ES	2.024,33	9,02	87	6,62	118,67	0,80	94,93	-7,90	€ 28.334	€ 223.839	€ 56.668	2
FI	559,00	2,49	30	2,28	32,77	0,80	26,21	3,80	€ 37.702	€ 0	€ 0	0
FR	2.802,25	12,49	188	14,30	164,27	1,00	164,27	23,70	€ 31.085	€ 0	€ 0	0
HR	100,83	0,45	0	0,00	5,91	0,80	4,73	-4,70	€ 11.400	€ 53.580	€ 11.400	1
HU	454,08	2,02	15	1,14	26,62	0,80	21,29	-6,30	€ 6.638	€ 41.819	€ 13.276	2
IE	421,67	1,88	58	4,41	24,72	1,00	24,72	33,30	€ 48.489	€ 0	€ 0	0
IT	2.334,24	10,41	98	7,45	136,83	0,80	109,47	-11,50	€ 28.215	€ 324.473	€ 84.645	3
LT	364,83	1,63	10	0,76	21,39	0,80	17,11	-7,10	€ 5.223	€ 37.083	€ 10.446	2
LU	216,33	0,96	14	1,06	12,68	1,00	12,68	1,30	€ 91.629	€ 0	€ 0	0
LV	247,33	1,10	3	0,23	14,50	0,80	11,60	-8,60	€ 3.893	€ 33.480	€ 7.786	2
MT	74,50	0,33	5	0,38	4,37	1,00	4,37	0,60	€ 15.332	€ 0	€ 0	0
NL	878,00	3,91	70	5,32	51,47	0,80	41,17	28,80	€ 46.774	€ 0	€ 0	0
PL	693,67	3,09	25	1,90	40,66	0,80	32,53	-7,50	€ 9.300	€ 69.750	€ 18.600	2
PT	635,00	2,83	30	2,28	37,22	0,80	29,78	0,20	€ 24.606	€ 0	€ 0	0
RO	385,00	1,72	4	0,30	22,57	0,80	18,05	-14,10	€ 5.750	€ 81.075	€ 23.000	4
SE	595,25	2,65	33	2,51	34,89	0,80	27,91	5,09	€ 42.804	€ 0	€ 0	0
SI	187,83	0,84	4	0,30	11,01	0,80	8,81	-4,80	€ 21.661	€ 103.973	€ 21.661	1
SK	283,67	1,26	12	0,91	16,63	0,80	13,30	-1,30	€ 7.912	€ 10.286	€ 0	0
UK	1.265,83	5,64	119	9,05	74,20	1,00	74,20	44,80	€ 33.846	€ 0	€ 0	0
TOTAL	22.432,72	100,00	1.315	100,00	1.315,00		1.172,33	142,48		€ 1.223.119	€ 298.495	24

Under the cost sharing agreement, each Member State has five years in which to reach the 'Target level'. In order to achieve balance at the end of the five years, the Member States are requested to second a variable number of teachers in each of the five years:

- The first year, Member States have been requested to second 1/5 (20%) of the number of teachers in the 'Difference' column.
- The second year, Member States have been requested to second 1/4 (25%) of the number of teachers in the 'Difference' column.
- The third year, Member States have been requested to second 1/3 (33%) of the number of teachers in the 'Difference' column.
- The fourth year, Member States have been requested to second 1/2 (50%) of the number of teachers in the 'Difference' column.
- The fifth and last year, Member States have been requested to second the number of teachers in the 'Difference' column.

In this way, at the end of the five years, the right balance amongst the Member States would be achieved.

Nationalities / Member States	Pupils with an EU nationality enrolled 15.10.2014	Pupils with an EU nationality enrolled 15.10.2015	Difference
AT	297	319	22
BE	2 269	2 568	299
BG	308	371	63
CY	33	40	7
CZ	308	391	83
DE	2 689	2 596	-93
DK	559	523	-36
EE	225	233	8
EL	805	869	64
ES	1 978	2 024	46
FI	593	559	-34
FR	2 747	2 802	55
HR	48	101	53
HU	357	454	97
IE	428	422	-6
IT	2 218	2 334	116
LT	321	365	44
LU	204	216	12
LV	217	247	30
MT	73	75	2
NL	909	878	-31
PL	532	694	162
PT	582	635	53
RO	293	385	92
SE	552	595	43
SI	126	188	62
SK	227	284	57
UK	1 416	1 266	-150
TOTAL	21 314	22 433	1 119

Development of the pupil population of 28 EU nationalities, without Munich

Nationalities / Member States	Seconded Staff in post per Member State in September 2014	Seconded Staff in post per Member State in October 2015	Difference
AT	18	20	2
BE	202	190	-12
BG	7	8	1
CY	0	0	0
CZ	15	16	1
DE	203	201	-2
DK	28	30	2
EE	6	7	1
EL	38	38	0
ES	86	87	1
FI	31	30	-1
FR	187	188	1
HR	0	0	0
HU	14	15	1
IE	61	58	-3
IT	89	98	9
LT	8	10	2
LU	17	14	-3
LV	3	3	0
MT	5	5	0
NL	75	70	-5
PL	23	25	2
PT	30	30	0
RO	2	4	2
SE	37	33	-4
SI	3	4	1
SK	11	12	1
UK	143	119	-24
TOTAL	1 342	1 315	-27

Development of secondments