



Schola Europaea

Office of the Secretary-General

Ref.: 2014-10-D-1-en-2

Orig.: FR

Facts and figures on the beginning of the 2014-2015 school year in the European Schools

Board of Governors of the European Schools

Meeting on 2-4 December 2014 – Brussels

INTRODUCTION

This document contains a number of facts and figures, *as at 15 October 2014*, on the situation of the European Schools after the beginning of the 2014-2015 school year, in terms of pupil population, of choices of languages by pupils and of staff (seconded, locally recruited teachers and AAS).

This document also includes figures on pupils' repeat rate for the 2013-2014 school year and the 2014 Baccalaureate results.

These facts and figures will subsequently be incorporated into the Secretary-General's annual report, which will be presented to the Board of Governors in April 2015.

II. DEVELOPMENT OF THE PUPIL POPULATION

1. Total pupil population

Table 'EL1' shows pupil numbers for each school and the total numbers for the system as a whole, year on year, for the period *2011-2014* and the percentage variation year on year over the reference period. The last column shows the percentage variation in pupil numbers over the period as a whole.

Table 'EL 1': Pupil population from 2011 to 2014

Schools	2011		2012		2013		2014		Difference between 2011 and 2014	
	Population	%	Population	%	Population	%	Population	%	Population	%
Alicante	1027	-0,77%	1052	2,43%	1042	-0,95%	1007	-3,36%	-20	-1,95%
Bergen	581	-4,44%	556	-4,30%	565	1,62%	552	-2,30%	-29	-4,99%
Brussels I	3131	1,85%	3040	-2,91%	3083	1,41%	3278	6,33%	147	4,69%
Brussels II	3176	2,82%	3144	-1,01%	3078	-2,10%	2958	-3,90%	-218	-6,86%
Brussels III	2919	0,59%	2892	-0,92%	2870	-0,76%	2906	1,25%	-13	-0,45%
Brussels IV	1059	30,90%	1530	44,48%	1932	26,27%	2263	17,13%	1204	113,69%
Culham	745	-7,68%	682	-8,46%	600	-12,02%	537	-10,50%	-208	-27,92%
Frankfurt	1136	4,70%	1191	4,84%	1247	4,70%	1424	14,19%	288	25,35%
Karlsruhe	934	-0,95%	911	-2,46%	925	1,54%	863	-6,70%	-71	-7,60%
Luxembourg I	3579	2,99%	2715	-24,14%	2786	2,62%	2972	6,68%	-607	-16,96%
Luxembourg II	957	1,48%	1965	105,33%	2101	6,92%	2243	6,76%	1286	134,38%
Mol	767	-2,79%	744	-3,00%	738	-0,81%	723	-2,03%	-44	-5,74%
Munich	1990	4,68%	2063	3,67%	2183	5,82%	2237	2,47%	247	12,41%
Varese	1366	3,64%	1384	1,32%	1397	0,94%	1422	1,79%	56	4,10%
Total	23367	2,59%	23869	2,15%	24547	2,84%	25385	3,41%	2018	8,64%

The total population of the European Schools on *15 October 2014* was **25,385** pupils, representing an average growth rate of **3.41%** compared with 2013, although this covers markedly different situations according to the Schools.

65.46% of the total pupil population is to be found in the Brussels (**44.92%**) and Luxembourg (**20.54%**) Schools.

On 4 September 2012, the European School, Luxembourg II moved into its new premises at Bertrange, a locality situated 7 kilometres to the west of the centre of the city of Luxembourg. It is located on a magnificent 14-hectare site, near another school, Lycée Josy Barthel.

2243 pupils (nursery, primary and secondary) are on roll for the 2014-2015 school year. An increase of almost **7%** in the number of pupils on roll at Luxembourg II between 2013 and 2014 is to be noted.

In Brussels, the three old schools continue to be overcrowded, whilst the Brussels IV School, on its new site at Laeken, which opened in September 2012, has **2263** pupils on roll (i.e. up by **over 17%** on last year).

The Frankfurt and Munich Schools are recording high growth rates as a result of the increase in the number of staff of the European Central Bank and the European Patent Office.

The April 2007 decision of the Board of Governors to phase out the Culham School from 2010 has led to an annual fall in pupil numbers.

The new Accredited School, Europa School UK (nursery classes and P1), has been open on the Culham site since 1 September 2012.

2. Pupil population by category

Tables 'EL 2a', 'EL 2b' and 'EL 2c' show, for each year from 2011 to 2014, the number of pupils in the three categories and the percentage for which each category accounts in relation to the total number of pupils in each school. The last two columns in each of these tables give the variation, in absolute and percentage terms, in pupil numbers in the various categories in each school and in the system as a whole over the same period.

Table 'EL 2a': Pupil population from 2011 to 2014, Category I population

Schools	2011		2012		2013		2014		Difference between 2011 and 2014	
	Population	%	Population	%	Population	%	Population	%	Population	%
Alicante	488	47,51 %	577	54,85 %	606	58,16 %	615	61,07%	127	26,02%
Bergen	109	18,76 %	108	19,42 %	123	21,77 %	131	23,73%	22	20,18%
Brussels I	2869	91,63 %	2807	92,34 %	2843	92,22 %	3116	95,06%	247	8,61%
Brussels II	2965	93,35 %	2945	93,67 %	2910	94,54 %	2814	95,13%	-151	-5,09%
Brussels III	2760	94,55 %	2752	95,16 %	2736	95,33 %	2782	95,73%	22	0,80%
Brussels IV	1032	97,45 %	1492	97,52 %	1878	97,20 %	2191	96,82%	1159	112,31%
Culham	92	12,34 %	75	11,00 %	57	9,50 %	43	8,01%	-49	-53,26%
Frankfurt	780	68,66 %	823	69,10 %	903	72,41 %	1118	78,51%	338	43,33%
Karlsruhe	171	18,30 %	173	18,99 %	180	19,46 %	186	21,55%	15	8,77%
Luxembourg I	2934	81,97 %	2322	85,52 %	2352	84,42 %	2461	82,81%	-473	-16,12%
Luxembourg II	756	78,99 %	1445	73,54 %	1526	72,63 %	1614	71,96%	858	113,49%
Mol	138	17,99 %	140	18,82 %	154	20,87 %	163	22,54%	25	18,12%
Munich	1527	76,73 %	1610	78,04 %	1705	78,10 %	1768	79,03%	241	15,78%
Varese	775	56,73 %	748	54,05 %	791	56,62 %	821	57,74%	46	5,94%
Total	17396	74,44%	18017	75,48%	18764	76,44%	19823	78,09%	2427	13,95%

Category I pupils are mainly children of officials and contract staff (at least one year) of the EU institutions and of the staff of the European Schools, and of the European Patent Office in the case of Munich.

The percentage of pupils belonging to Category I has been steadily increasing in recent years and this category now accounts for **over 78%** of the pupil population of the system as a whole.

The Brussels and Luxembourg Schools, where there are large numbers of EU officials and the inadequacy of the infrastructure requires a restrictive enrolment policy to be enforced for Categories II and III pupils, have a high percentage of Category I pupils – **over 90% in the four Brussels Schools** – whereas the schools located in places where the number of EU officials is small have a far lower percentage of such pupils.

At Varese, **more than half** of the pupils are Category I pupils, while at Munich pupils belonging to this category, the vast majority of whom are children of staff of the European Patent Office, account for **almost 80%** of the pupil population.

In the two newer schools outside the Brussels/Luxembourg region – Alicante and Frankfurt – the increase in the percentage of this category of pupil has continued, with Frankfurt now having reached **78.51%**.

This upward trend is, moreover, continuing at Frankfurt, where the number of applications for enrolment of children of staff of the European Central Bank is increasing steadily.

Table 'EL 2b': Pupil population from 2011 to 2014, Category II population

Schools	2011		2012		2013		2014		Difference between 2011 and 2014	
	Population	%	Population	%	Population	%	Population	%	Population	%
Alicante	3	0,29 %	1	0,10 %	1	0,10 %	0	0,00%	-3	-100,00%
Bergen	0	0,00 %	1	0,18 %	1	0,18 %	1	0,18%	1	0,00%
Brussels I	53	1,69 %	52	1,71 %	43	1,39 %	39	1,19%	-14	-26,42%
Brussels II	106	3,33 %	95	3,02 %	81	2,63 %	67	2,27%	-39	-36,79%
Brussels III	50	1,71 %	45	1,56 %	44	1,53 %	38	1,31%	-12	-24,00%
Brussels IV	13	1,22 %	16	1,05 %	27	1,40 %	30	1,33%	17	130,77%
Culham	25	3,35 %	29	4,25 %	27	4,50 %	25	4,66%	0	0,00%
Frankfurt	107	9,41 %	108	9,07 %	109	8,74 %	89	6,25%	-18	-16,82%
Karlsruhe	267	28,58 %	254	27,88 %	247	26,70 %	216	25,03%	-51	-19,10%
Luxembourg I	181	5,05 %	79	2,91 %	82	2,94 %	91	3,06%	-90	-49,72%
Luxembourg II	69	7,21 %	168	8,55 %	188	8,95 %	200	8,92%	131	189,86%
Mol	15	1,95 %	11	1,48 %	11	1,49 %	8	1,11%	-7	-46,67%
Munich	131	6,58 %	124	6,01 %	139	6,37 %	150	6,71%	19	14,50%
Varese	177	12,95 %	174	12,57 %	174	12,46 %	185	13,01%	8	4,52%
Total	1197	5,12 %	1157	4,85 %	1174	4,78 %	1139	4,49%	-58	-4,85%

Category II pupils are admitted under the terms of agreements entered into between the Schools and certain organisations and companies. By virtue of these agreements, a fee is paid for each pupil thus admitted which is equivalent to the actual cost to the school's budget of the education provided.

This category of pupils currently accounts for **4.49%** of the total pupil population.

Category II pupils account for **25.03%** of the pupil population of the Karlsruhe School and **13.01%** of that of Varese.

Table 'EL 2c': Pupil population from 2011 to 2014 – Category III population

Schools	2011		2012		2013		2014		Difference between 2011 and 2014	
	Population	%	Population	%	Population	%	Population	%	Population	%
Alicante	536	52,19 %	474	45,06 %	435	41,75 %	392	39,93%	-144	-26,87%
Bergen	472	81,24 %	447	80,40 %	441	78,05 %	420	76,09%	-52	-11,02%
Brussels I	209	6,67 %	181	5,95 %	197	6,39 %	123	3,75%	-86	-41,15%
Brussels II	105	3,30 %	104	3,31 %	87	2,83 %	77	2,60%	-28	-26,67%
Brussels III	109	3,73 %	95	3,28 %	90	3,14 %	86	2,96%	-23	-21,10%
Brussels IV	14	1,32 %	22	1,44 %	27	1,40 %	42	1,86%	28	200,00%
Culham	628	84,29 %	578	84,75 %	516	86,00 %	469	87,34%	-159	-25,32%
Frankfurt	249	21,91 %	260	21,83 %	235	18,85 %	217	15,24%	-32	-12,85%
Karlsruhe	496	53,10 %	484	53,13 %	498	53,84 %	461	53,42%	-35	-7,06%
Luxembourg I	464	12,96 %	314	11,57 %	352	12,63 %	420	14,13%	-44	-9,48%
Luxembourg II	132	13,79 %	352	17,91 %	387	18,42 %	429	19,13%	297	225,00%
Mol	614	80,05 %	593	79,70 %	573	77,64 %	552	76,35%	-62	-10,10%
Munich	332	16,68 %	329	15,95 %	339	15,53 %	319	14,26%	-13	-3,92%
Varese	414	30,30 %	462	33,38 %	432	30,92 %	416	29,25%	2	0,48%
Total	4774	20,43 %	4695	19,67 %	4609	18,78 %	4423	17,42%	-351	-7,35%

Category III pupils are pupils whose parents are required to pay school fees.

They currently account for **17.42%** of the pupils of the European Schools.

3. Pupil population by nationality and by category

Table 'EL 2d' shows the number of pupils from each of the Member States and the percentage of the total number of pupils from the Member States represented by the pupils from each Member State. These figures are given by category and for the overall situation. It should be noted that for the purposes of this table, pupils who are nationals of countries other than the Member States are disregarded. Consequently, the total population figures do not correspond exactly to the figures in the previous tables where pupils' nationality was not taken into account.

The figures in this report, compiled on 15 October 2014, concern the 28 EU Member States, after the most recent enlargement wave, which saw Croatia's accession in July 2013.

It should be noted that the figures in this table are not 'round numbers'. A large number of pupils enrolled in the European Schools have more than one nationality. Pupils with dual nationality or more are calculated as shares: dual nationality as 0.5+0.5, triple nationality as 0.33+0.33+0.33).

In addition, there are *1261.25* pupils, i.e. **4.96%** of the total population, who are nationals of non-EU countries.

Table EL 2d: Pupil population by nationality and by category
Member States of the European Union

	Category I		Category II		Category III		Total	
	Population	%	Population	%	Population	%	Population	%
German	2485,33	72,57%	187,33	5,47%	752,17	21,96%	3424,83	13,49%
Austrian	329,67	88,94%	9	2,43%	32	8,63%	370,67	1,46%
Belgian	2140,42	86,10%	46,67	1,88%	299	12,03%	2486,09	9,79%
British	980,67	66,00%	94,5	6,36%	410,67	27,64%	1485,84	5,85%
Bulgarian	335,67	95,31%	8,5	2,41%	8	2,27%	352,17	1,39%
Cypriot	38,5	100,00%					38,5	0,15%
Croat	78,67	94,02%	2	2,39%	3	3,59%	83,67	0,33%
Danish	443	76,32%	53	9,13%	84,5	14,55%	580,67	2,29%
Spanish	1761	81,30%	53,5	2,47%	351,67	16,23%	2166,17	8,53%
Estonian	221,5	98,88%	1	1,45%	1,5	0,67%	224	0,88%
Finnish	564,17	94,42%	8,33	1,39%	25	4,18%	597,5	2,35%
French	2401,75	78,16%	131,17	4,27%	540	17,57%	3072,92	12,11%
Greek	750,33	84,20%	17	1,91%	123,83	13,90%	891,16	3,51%
Hungarian	406,75	93,78%	12,5	2,88%	14,50	3,34%	433,75	1,71%
Irish	402,17	87,14%	14	3,03%	45,33	9,82%	461,5	1,82%
Italian	1886,42	73,53%	199,5	7,78%	479,67	18,70%	2565,59	10,11%
Latvian	237,83	98,75%			3	1,25%	240,83	0,95%
Lithuanian	336	97,39%	1	0,29%	8	2,32%	345	1,36%
Luxembourg	155,67	69,24%	1	0,44%	68,17	30,32%	224,84	0,89%
Maltese	70	100,00%					70	0,28%
Dutch	472,5	47,85%	38	3,85%	477,0	48,30%	987,5	3,89%
Polish	578,67	92,02%	11,5	1,83%	38,67	6,15%	628,84	2,48%
Portuguese	570,67	88,94%	13	2,03%	58	9,04%	641,67	2,53%
Romanian	332,5	90,23%	15	4,07%	21	5,70%	368,5	1,45%
Slovak	269,67	96,42%	1	0,36%	9	3,22%	279,67	1,10%
Slovene	155,83	100,00%					155,83	0,61%
Swedish	511,92	85,21%	17,33	2,89%	71,5	11,90%	600,75	2,37%
Czech	318	92,08%	3	0,87%	24,33	7,05%	345,33	1,36%
Total	19235,42		938,83		3949,5		24123,75	

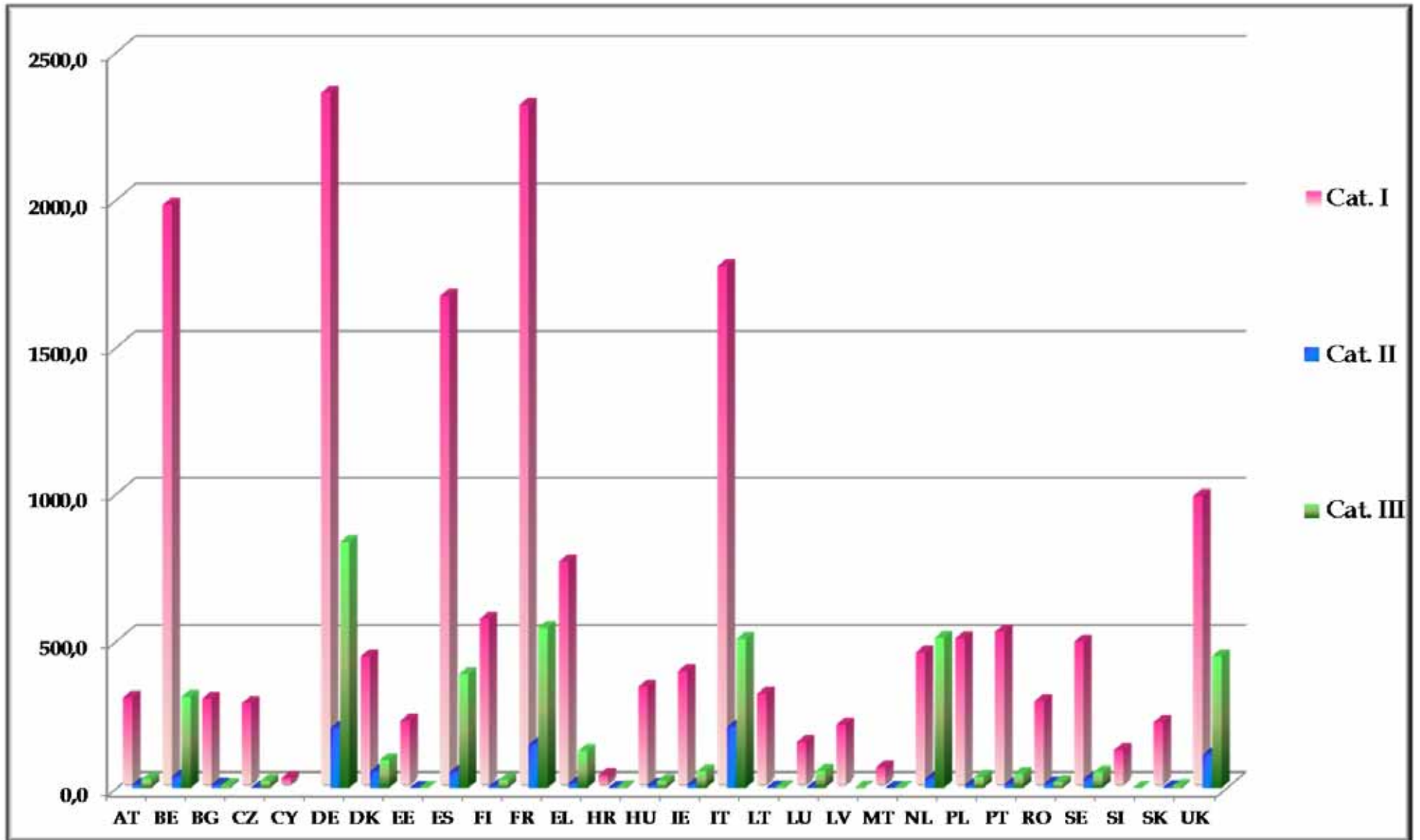


Table 'El2d-a': Pupil population by nationality and by school

Member States of the European Union

	Alicante	Bergen	Brussels I	Brussels II	Brussels III	Brussels IV	Culham	Frankfurt	Karlsruhe	Luxembourg I	Luxembourg II	Mol	Munich	Varese	TOTAL
Austrian	3,5	1	53,5	54	59	44	4	17	8,5	26	14,5	8	51,17	26,5	370,67
Belgian	34,5	23	392,33	332	404	555,42	13,5	45,17	13,33	191,67	141,5	215,17	54	70,5	2486,08
British	66	30	147	111,75	163,08	101	186,83	96,17	45,5	173,5	108,5	35,67	120,5	100,33	1485,83
Bulgarian	9,5	2	51,33	7	5,33	113	2	10,5	1,5	109	4,5	9	15,5	12	352,17
Croat			17,5		1,33	33			1	5	19,00		2,33	4,5	83,67
Cypriot			1	1	26,5	1,5				1	6,5		0,5	0,5	38,5
Czech	4	4,5	8,33	8,33	182,83	13	1,5	4,00	7	6	82,33	6,5	6	11	345,33
Danish	10,5	4	222,33	8	9	11,5	11	16	6	21,33	211	4	36	10	580,67
Dutch	30,5	196,33	25,5	90,83	107,67	30,5	18,5	51,0	10	148,5	11	112,33	87,33	67	987,5
Estonian			2,5	134,5	0,5	1,5		1		72,5	1,5	3,5	5	1,5	224
Finnish	4,5	6,5	12,5	333,5	7	11,17	1	23	3	157,33	7,5	5,5	14	11	597,5
French	87,83	64,83	452,67	200,25	326,58	346,5	135,83	120,92	112,33	385,67	363,33	75,67	286,5	114	3072,92
German	99	31,83	279,5	252,33	271,67	202,58	105,5	429,25	411,67	256,83	165,17	25	739,67	154,83	3424,83
Greek	8	10	34,5	18	432,33	26,5		34,5	8	24,5	155,83	6,5	95	37,5	891,17
Hungarian	7	3,5	213,67	7,5	18,58	12		18	10	11,5	90	3,5	19,5	19,5	433,75
Irish	16	5,5	48,5	48,5	74,83	73	5	34,5	5	41,83	32	15,5	36	25,33	461,5
Italian	34,83	26,33	377,17	327,33	75,08	267,17	26,5	200,17	35	100,83	347	19	274,67	454,5	2565,58
Latvian	4		3,5	143	3	4		6,33		67	1,5	1	3,5	4	240,83
Lithuanian	7,5	4	4	182	3	3,50		8,5	1,5	112	4	1	3	11	345
Luxembourgers	4	1	5,5	6	7	7		4,00	1,5	85,17	91,67		11	1	224,83
Maltese			45,5	1,5	0,5	1		1		7,5	11			2	70
Polish	9	5	290,17	20,83	15,17	27,5	3,5	29,5	5,5	166,33	9,83	10,5	23,5	12,5	628,83
Portuguese	12,5	6,5	16,67	257,17	22,5	18,83	5	52	2	181,5	18	2	21	26	641,67
Romanian	3	5,5	44,67	7	12,5	163	1		10	10,33	61,5	1	33	16	368,5
Slovak	7	4	3	0,50	158,67	2,5		12		7,5	66	3	7	8,5	279,67
Slovene	1	2	68	1	1,83	4		7,5		6	59,5		3,5	1,5	155,83
Spanish	502,83	25,5	349	65,17	434,67	91,5	7	123,83	20	287,83	32	13,83	152,5	60,5	2166,17
Swedish	6,5	8,5	27	261,25	11,83	16	0,5	15,5	4,33	181,83	8	13	29	17,5	600,75
TOTAL	973	471,33	3196,83	2880,25	2836	2182,17	528,17	1361,33	722,17	2846	2124,17	590,17	2131,17	1281	24123,75

4. Pupil population by teaching level

Table 'EL 3': Population by teaching level from 2011 to 2014

Schools	Cycle	2011		2012		2013		2014		Difference between 2011 and 2014	
		Population	%	Population	%	Population	%	Population	%	Population	%
Alicante	Nursery	117	-2,50%	117	0,00%	117	0,00%	102	-12,82%	-15	-12,82%
	Primary	361	1,40%	383	6,09%	370	-3,39%	369	-0,27%	8	2,22%
	Secondary	549	-1,79%	552	0,55%	555	0,54%	536	-3,42%	-13	-2,37%
Total Alicante		1027	-0,77%	1052	2,43%	1042	-0,95%	1007	-3,36%	-20	-1,95%
Bergen	Nursery	54	-12,90%	38	-29,63%	46	21,05%	54	17,39%	0	0,00%
	Primary	205	-7,66%	205	0,00%	210	2,43%	192	-8,57%	-13	-6,34%
	Secondary	322	-0,62%	313	-2,80%	309	-1,27%	306	-0,97%	-16	-4,97%
Total Bergen		581	-4,44%	556	-4,30%	565	1,61%	552	-2,30%	-29	-4,99%
Brussels I	Nursery	266	10,83%	239	-10,15%	276	15,48%	339	22,83%	73	27,44%
	Primary	1063	-2,57%	993	-6,59%	1083	9,06%	1184	9,33%	121	11,38%
	Secondary	1802	3,38%	1808	0,33%	1724	-4,64%	1755	1,80%	-47	-2,61%
Total Brussels I		3131	1,85%	3040	-2,91%	3083	1,41%	3278	6,33%	147	4,69%
Brussels II	Nursery	295	-3,59%	282	-4,41%	261	-7,44%	268	2,68%	-27	-9,15%
	Primary	1189	5,88%	1127	-5,21%	1097	-2,66%	1035	-5,65%	-154	-12,95%
	Secondary	1692	1,93%	1735	2,54%	1720	-0,86%	1655	-3,78%	-37	-2,19%
Total Brussels II		3176	2,82%	3144	-1,01%	3078	-2,09%	2958	-3,90%	-218	-6,86%
Brussels III	Nursery	261	-0,38%	283	8,43%	293	3,53%	297	1,37%	36	13,79%
	Primary	932	-0,85%	947	1,61%	964	1,79%	1025	6,33%	93	9,98%
	Secondary	1726	1,53%	1662	-3,71%	1613	-2,94%	1584	-1,80%	-142	-8,23%
Total Brussels III		2919	0,59%	2892	-0,92%	2870	-0,76%	2906	1,25%	-13	-0,45%
Brussels IV	Nursery	199	18,45%	244	22,61%	264	8,19%	297	12,50%	98	49,25%
	Primary	673	18,07%	866	28,68%	965	11,43%	1015	5,18%	342	50,82%
	Secondary	187		420	124,60%	703	67,38%	951	35,28%	764	408,56%
Total Brussels IV		1059	30,90%	1530	44,48%	1932	26,27%	2263	17,13%	1204	113,69%
Culham	Nursery	0	-100,00%								
	Primary	293	5,02%	242	-17,41%	182	-24,79%	132	-27,47%	-161	-54,95%
	Secondary	452	-6,42%	440	-2,65%	418	-5,00%	405	-3,11%	-47	-10,40%
Total Culham		745	-7,68%	682	-8,46%	600	-12,02%	537	-10,50%	-208	-27,92%
Frankfurt	Nursery	149	4,93%	165	10,74%	160	-3,03%	183	14,38%	34	22,82%
	Primary	444	6,47%	461	3,83%	506	9,76%	585	15,61%	141	31,76%
	Secondary	543	3,23%	565	4,05%	581	2,83%	656	12,91%	113	20,81%
Total Frankfurt		1136	4,70%	1191	4,84%	1247	104,70%	1424	14,19%	288	25,35%
Karlsruhe	Nursery	100	-5,66%	89	-11,00%	92	3,37%	77	-16,30%	-23	-23,00%
	Primary	312	5,41%	301	-3,53%	311	3,32%	299	-3,86%	-13	-4,17%
	Secondary	522	-3,51%	521	-0,19%	522	0,19%	487	-6,70%	-35	-6,70%
Total Karlsruhe		934	-0,95%	911	-2,46%	925	1,53%	863	-6,70%	-71	-7,60%
Luxemb. I	Nursery	374	10,32%	413	10,43%	382	-7,50%	448	17,28%	74	19,79%
	Primary	930	2,99%	949	2,04%	1042	9,79%	1138	9,21%	208	22,37%
	Secondary	2275	1,88%	1353	-40,53%	1362	0,66%	1386	1,76%	-889	-39,08%
Total Luxembourg I		3579	2,99%	2715	-24,14%	2786	2,61%	2972	6,68%	-607	-16,96%
Luxemb. II	Nursery	247	15,96%	238	-3,64%	270	13,44%	299	10,74%	52	21,05%
	Primary	710	-2,74%	708	-0,28%	773	9,18%	842	8,93%	132	18,59%
	Secondary			1019		1058	3,82%	1102	4,16%	1102	
Total Luxembourg II		957	1,48%	1965	105,33%	2101	6,92%	2243	6,76%	1286	134,38%
Mol	Nursery	73	1,39%	62	-15,07%	76	22,58%	77	1,32%	4	5,48%
	Primary	245	-1,61%	252	2,86%	245	-2,77%	222	-9,39%	-23	-9,39%
	Secondary	449	-4,06%	430	-4,23%	417	-3,02%	424	1,68%	-25	-5,57%
Total Mol		767	-2,79%	744	-3,00%	738	-8,00%	723	-2,03%	-44	-5,74%
Munich	Nursery	115	-1,71%	126	9,57%	136	7,93%	143	5,15%	28	24,35%
	Primary	876	5,04%	894	2,05%	929	11,39%	913	-1,72%	37	4,22%
	Secondary	999	5,16%	1043	4,40%	1118	7,19%	1181	5,64%	182	18,22%
Total Munich		1990	4,68%	2063	3,67%	2183	5,81%	2237	2,47%	247	12,41%
Varèse	Nursery	115	12,75%	111	-3,48%	113	10,78%	119	5,31%	4	3,48%
	Primary	534	6,37%	528	-1,12%	515	2,58%	527	2,33%	-7	-1,31%
	Secondary	717	0,42%	745	3,91%	769	3,22%	776	0,91%	59	8,23%
Total Varese		1366	3,64%	1384	1,32%	1397	0,93%	1422	1,79%	56	4,10%
Total	Nursery	2365	3,09%	2407	1,78%	2486	3,28%	2703	8,73%	338	14,29%
	Primary	8767	2,99%	8856	1,02%	9192	3,79%	9478	3,11%	711	8,11%
	Secondary	12235	2,19%	12606	3,03%	12869	2,08%	13204	2,60%	969	7,92%
		23367	2,58%	23869	2,15%	24547	2,84%	25385	3,41%	2018	8,64%

Table 'EL 3' shows, for each year under review, the number of pupils at each teaching level (Nursery, Primary and Secondary) in each school and in the system as a whole, as well as the percentage variation year on year since 2011.

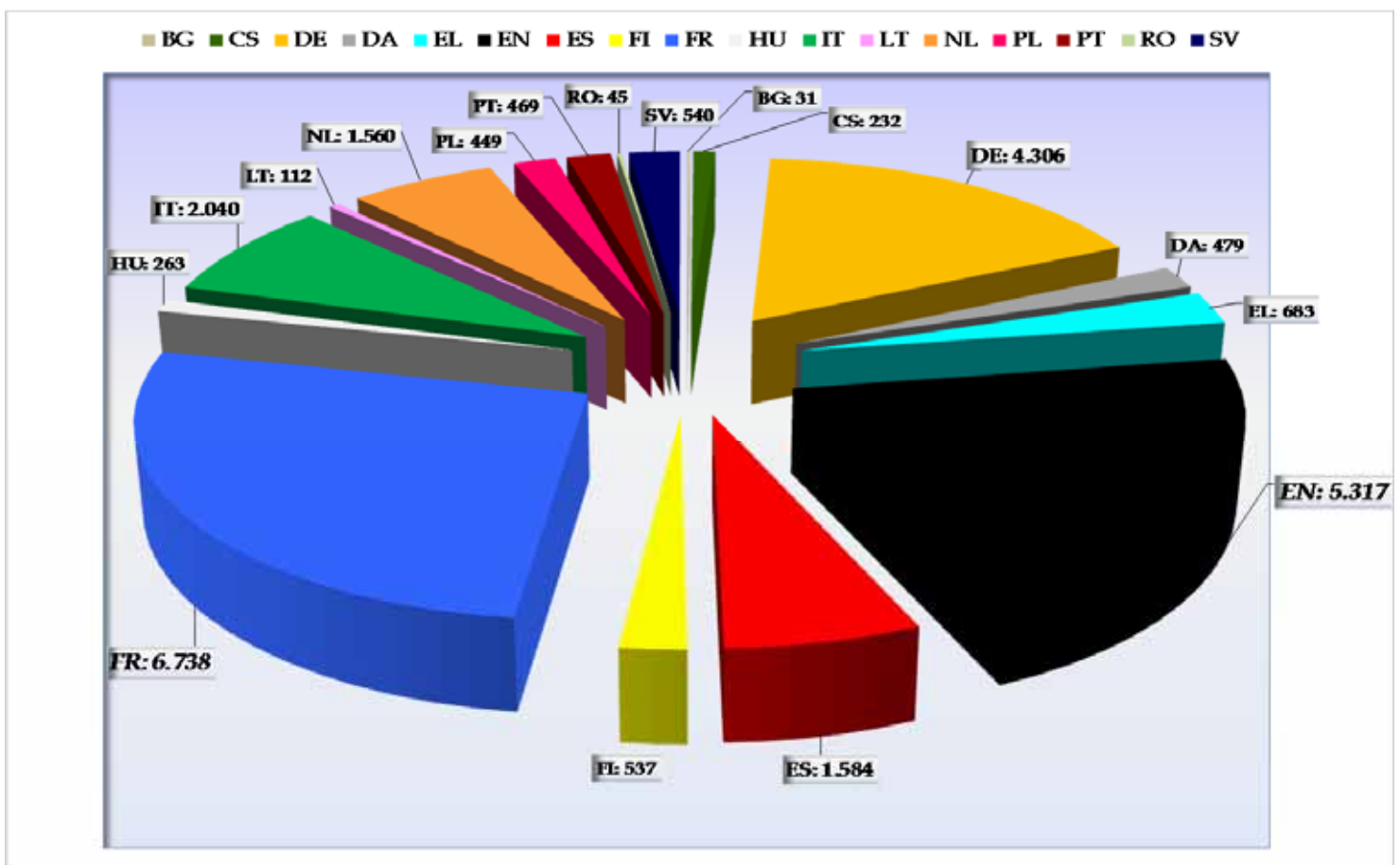
The last two columns show the differences, in absolute and percentage terms, recorded for each teaching level in each school and in the system as a whole for the period since 2011.

5. Pupil population by language section

Table 'LANG SECT 1' shows the population of each of the language sections in each of the schools for the current school year, while the overall situation for the system as a whole is summarised in the accompanying pie chart.

Table 'LANG SECT 1': Language sections – 2014-2015 school year

Schools	BG	CS	DE	DA	EL	EN	ES	FI	FR	HU	IT	LT	NL	PL	PT	RO	SV	Total
Alicante			156			266	388		197									1.007
Bergen						227			104				221					552
Brussels I			332	240		476	332		1.090	213	315			280				3.278
Brussels II			298			438		366	653		279	112	211		282		319	2.958
Brussels III		173	322		465	434	430		823				259					2.906
Brussels IV	31		266			468			1.073		200		180			45		2.263
Culham			132			208			197									537
Frankfurt			484			515			207		218							1.424
Karlsruhe			388			298			177									863
Luxembourg I			367			526	327	171	764				240	169	187		221	2.972
Luxembourg II		59	268	239	171	414			717	50	325							2.243
Mol			43			275			149				256					723
Munich			1.033		47	331	107		377		247		95					2.237
Varese			217			441			210		456		98					1.422
Total	31	232	4.306	479	683	5.317	1.584	537	6.738	263	2.040	112	1.560	449	469	45	540	25.385



Broadly speaking, pupil numbers in the different language sections reflect the size of the population in question in Europe, but clearly the languages of those countries which are host countries to the schools and the EU institutions are particularly well represented in the schools.

The concentration of the institutions in cities (Brussels and Luxembourg) which are largely Francophone is reflected in the size of the Francophone sections. The Francophone section accounts for **almost a third** of the total number of pupils on roll at the Brussels I School and for **47%** at the Brussels IV School. All the schools have a Francophone section and an Anglophone and a German section, with the exception, in the case of the latter, of Bergen.

The Romanian section, which officially opened on the Laeken site in September 2013, has 45 pupils on roll.

The Anglophone sections have the highest percentage of SWALS.

The Lithuanian section set up at Brussels II for the nursery and primary in 2006 now has **112** pupils on roll.

In the case of the smaller language sections, classes (year groups) are grouped together according to pupil numbers, in accordance with the decisions of the Board of Governors.

SWALS (Students Without A Language Section)

SWALS are those Categories I and II pupils whose mother tongue/dominant language is an official language of an EU Member State (with the exception of Irish and Maltese) but for whom no language section in their mother tongue/dominant language (L1) exists in their school.

If one of the language sections of the European Schools corresponding to a Category I or II pupil's mother tongue/dominant language is not open in the school, this pupil is entitled to tuition in his/her L1, working on the assumption that the School has at its disposal a duly qualified teacher, or can recruit one.

SWALS are normally enrolled in one of the working language (DE, EN, FR) sections. The language of the section is the pupil's L2. SWALS can also be enrolled in the language section of the host country on condition that no additional costs are created. Their L2 must be English, French or German.

SWALS are entitled to receive educational support when lack of knowledge of the language of the section in which they are enrolled is a barrier to communication, integration and learning. This support focuses on the acquisition of this language and thus facilitates SWALS' access to the curriculum.

Since 1 September 2011, Category III pupils have learned as L1 the language of the section in which they are enrolled. Category III pupils who were enrolled before 1 September 2011 and who learned as L1 a language different from that of the section can continue with the same L1 up to the end of their schooling in order to ensure pedagogical continuity.

Language section	Number of pupils
CS	46
DE	531
EL	2
EN	1426
ES	101
FR	578
IT	68
NL	19
TOTAL	2771

Language of the L1 course	Number of pupils
BG	230
CS	117
DA	68
ET	220
ES	352
EL	151
FI	53
HR	47
HU	93
IT	101
LT	210
LV	208
NL	127
PL	67
PT	126
RO	183
SL	149
SK	183
SV	86
TOTAL:	2771

Pupil population by language section, category and cycle for the 2014-2015 school year

This table shows the population of each language section in each school, broken down by pupil categories and by cycle, namely nursery, primary and secondary

Schools	Language section	bg			cs			de			da			el			en			es			fi			fr			hu			it			lt			nl			pl			pt			ro			sv			Total:															
		1	1	3	1	2	3	1	2	3	1	2	3	1	2	3	1	2	3	1	2	3	1	2	3	1	2	3	1	2	3	1	2	3	1	2	3	1	2	3	1	1	2	3																								
Alicante	nursery				11		8									24		2	1			19			22			15			2																102																					
	primary				37		26									56			29			92			50			68			11																369																					
	secondary				35		39									76			80			124			81			58			43																536																					
Alicante	Total:				83		73									156			110			235			153			141			56																1.007																					
Bergen	nursery															10		1	13									6			5						7			12							54																					
	primary															31			50									12			26						12			61							192																					
	secondary															36			86									6			49						11			118							306																					
Bergen	Total:															77		1	149									24			80						30			191							552																					
Culham	primary						3			3			22			4			48									3			2			47													132																					
	secondary						6			13			85			16			138									11			5			129													405																					
Culham	Total:						9			16			107			20			2			186						14			7			176													537																					
Brussels I	nursery						45						22			45						18						114						35			24						36				339																					
	primary						111			1			3			97			130			1			2			124			4			385			4			7			82			1	2	95		5	2			127	1		1.184											
	secondary						151			4			17			116			5			273			8			17			178			8			542			8			30			90			1	2	164		5	20			112			4	1.755							
Brussels I	Total:						307			5			20			235			5			448			9			19			320			12			1.041			12			37			207			2	4	283		10	22			275	1	4	3.278								
Brussels II	nursery						30									35			1									29			44						18						32			15				30			34			268												
	primary						97			2			1			130			3			3						134			1			1			181			4			2			77			3			79	1	53	2	2		106		2	142	2	1.035					
	secondary						165			1			2			239			16			11						200			1			389			19			14			157			4			13			125			5	9		134		4	6	139	2	1.655				
Brussels II	Total:						292			3			3			404			19			15						363			2			1			614			23			16			252			7			20			111	1	193	7	11		270	4	8	315	2	2	2.958	
Brussels III	nursery				33		1			24						38			1			54						80															20										297															
	primary						90			110			1			178			1			8			129			2			8			147			2						256			7			5				76		3	2			1.025									
	secondary						48			1			182			2			3									222			4			13			221			5			15			229			2			4				454		9	12			146		2	10			1.584
Brussels III	Total:				171		2			316			3			438			5			22			404			790			16			17									242			5			12							2.906												
Brussels IV	nursery				15					48						46			2									128						18									19									21			297													
	primary						16			123			2			180			1			5						461			10			6			92			1			2			88			1			2						24			1.015							
	secondary									87			2			218			7			9						456			5			7			82						5			69			1										951									
Brussels IV	Total:				31					258			4			444			8			16						1.045			15			13						192			1			7			176			2			2				45			2.263						
Frankfurt	nursery									69			1			83												15			1						9						5													183												
	primary									206			6			205			2			2						52			7			18			40			12			27													585												
	secondary									153			8			186			12			25						57			22			35			43			20			62													656												
Frankfurt	Total:									428			14			474			14			27						124			29			54						92			32			94							1.424															

Schools	Language section		bg			cs			de			da			el			en			es			fi			fr			hu			it			lt			nl			pl			pt			ro			sv			Total:
	Cycle	Category	1	1	3	1	1	3	1	2	3	1	2	3	1	2	3	1	2	3	1	2	3	1	2	3	1	2	3	1	2	3	1	2	3	1	2	3	1	2	3	1	2	3	1	1	2	3						
Karlsruhe	nursery					15	3	18										3	1	20							2	1	14																						77			
	primary					51	36	47										13	34	45							13	14	46																						299			
	secondary					54	46	118										22	74	86							13	7	67																						487			
Karlsruhe	Total:					120	85	183							38	109	151										28	22	127																						863			
Luxembourg 1	nursery					57	1								65	5	11	39		5	18	3		132	2	5							20	2	4	32	2	14	1	8		18	2	2				448						
	primary					125	1	13							142	5	37	107	4	18	55	3	6	305	4	6				46	7	26	68	3	10	43	2	16				57	4	25				1.138						
	secondary					136	2	32							220	4	37	120	10	24	80	6		289	5	16				67	15	53	46	2	6	77	3	23				83	4	26				1.386						
Luxembourg 1	Total:					318	4	45							427	14	85	266	14	47	153	3	15	726	11	27				133	24	83	146	5	18	134	6	47				158	10	53				2.972						
Luxembourg II	nursery		24			23		1	13	3	5	16			36	3	15										91	4	26	13			19	6	1													299						
	primary		29	6		55	14	34	40	7	24	47	1	14	105	12	25										206	16	56	35	1	1	77	20	17													842						
	secondary					82	11	48	81	34	32	73	5	15	154	25	39										268	13	37				127	25	33													1.102						
Luxembourg II	Total:		53	6		160	25	83	134	44	61	136	6	29	295	40	79										565	33	119	48	1	1	223	51	51													2.243						
Mol	nursery					6		3							12		14										5		11				10		16													77						
	primary					7		8							19	1	71										7		34				14		61													222						
	secondary					3		16							30	2	126										15	3	74				35	2	118													424						
Mol	Total:					16		27							61	3	211										27	3	119				59	2	195													723						
Munich	nursery					61	1								25	3		13		4							33	1	2																			143						
	primary					345	7	5		15	32	95	15	5	75	5	10										145	8	5		88	24	16	15	2	21													913					
	secondary					499	29	86							134	19	35										169	3	11		53	32	54	23	1	33													1.181					
Munich	Total:					905	37	91		15	32	254	37	40	88	5	14										347	12	18		121	56	70	38	3	54													2.237					
Varese	nursery					10	1	5							37	13	1										7	2	7		24	1	1	7		3													119					
	primary					38	2	40							106	48	27										38	11	32		97	19	34	18		17													527					
	secondary					57	4	60							112	48	49										71	3	39		175	29	76	24	4	25													776					
Varese	Total:					105	7	105							255	109	77										116	16	78		296	49	111	49	4	45													1.422					
GRAND TOTALS			bg	cs		de		da		el		en		es		fi		fr		hu		it		lt		nl		pl		pt		ro		sv		Total:																		
			1	1	3	1	2	3	1	2	3	1	2	3	1	2	3	1	2	3	1	2	3	1	2	3	1	2	3	1	2	3	1	2	3	1	1	2	3	1	1	2	3							Total:				
Nursery			15	57	1	399	6	36	35	3	5	54	0	1	475	26	78	134	0	32	47	0	3	672	10	73	48	0	0	112	7	7	32	0	98	2	35	68	0	2	44	1	8	21	52	2	2	2.703						
Primary			16	119	6	1.308	75	208	137	7	24	240	2	54	1.345	124	357	545	9	84	189	4	7	2.132	87	301	117	2	3	546	84	105	79	1	322	15	192	195	4	10	149	2	18	24	199	4	27	9.478						
Secondary			48	1	1.610	122	542	197	34	37	295	9	28	1.937	222	753	651	12	117	280	1	6	2.798	102	563	90	1	2	801	115	263	0	0	500	30	366	158	2	10	211	7	29		222	6	26	13.204							
	Total:		31	224	8	3.317	203	786	369	44	66	589	11	83	3.757	372	1.188	1.330	21	233	516	5	16	5.602	199	937	255	3	5	1.459	206	375	111	1	920	47	593	421	6	22	404	10	55	45	473	12	55	25.385						

II. CHOICES OF LANGUAGES

Choices of foreign languages

The three tables below give details of European School pupils' choices of language for study.

Language 2 is a pupil's first foreign language, which is studied from primary year 1 and is taken up to Bacalaureate level. It is the medium of instruction in a number of subjects in secondary school. Since 1 September 2014, Language 3 has been a compulsory subject from secondary years 1 to 5 and may be taken up to Bacalaureate level. Language 4 is optional and may be studied from secondary year 4. (Some schools also offer a Language 5 which pupils may take at beginner level as a complementary course forming part of the curriculum of secondary years 6 and 7).

Table 'LANG 2' shows the percentage of pupils choosing English, French and German as Language 2 in the current year. Pupils' range of choices of Language 2 is confined to English, French and German up to secondary year 5. In years 6 and 7, although one of these three languages must be the language of tuition for the study of certain subjects, the choice of a different Language 2 may be possible, conditional upon proven knowledge of the language in question. This is the most often the language of the school's host country.

Table 'LANG 2': Choice of Language 2, 2014-2015 school year

Schools	German	English	French	Other (as from secondary year 6)
Alicante	9,95 %	71,62 %	14,87 %	3,14 %
Bergen	7,41 %	70,37 %	20,27 %	1,95 %
Brussels I	5,91 %	61,05 %	33,04 %	
Brussels II	4,38 %	60,21 %	35,41 %	
Brussels III	6,93 %	58,62 %	34,75 %	
Brussels IV	5,15 %	61,42 %	33,44 %	
Culham	8,39 %	68,93 %	22,68 %	
Frankfurt	43,70 %	52,26 %	4,04 %	
Karlsruhe	46,95 %	42,28 %	10,77 %	
Luxembourg I	11,89 %	54,93 %	33,18 %	
Luxembourg II	15,55%	55,81%	28,64%	
Mol	7,16 %	53,66 %	39,18 %	
Munich	50,64 %	42,47 %	6,89 %	
Varese	7,45 %	72,26 %	19,45 %	0,84 %
Total	16,53%	58,99%	24,04%	

English clearly continues to be by far the most popular choice for Language 2, except in the schools in Germany, where German is chosen by approximately half of the pupils enrolled in a language section other than the German section, or enrolled in the latter section as SWALS.

Tables 'LANG 3a' and 'LANG 4a' show the most popular choices, in each school, of languages for study of Language 3 and Language 4 respectively.

Table 'LANG 3a': The three most frequently chosen languages in each school as Language 3 on entry into secondary year 1, 2014-2015 school year

Schools	Choice 1		Choice 2		Choice 3	
	Language	%	Language	%	Language	%
Alicante	French	38,32%	German	29,71%	Spanish	24,59%
Bergen	Spanish	29,37%	Dutch	27,38%	French	22,62%
Brussels I	English	28,20%	French	24,33%	Spanish	21,77%
Brussels II	French	32,62%	English	31,18%	Spanish	13,55%
Brussels III	English	28,39%	French	27,15%	Spanish	16,08%
Brussels IV	Spanish	24,26%	Dutch	20,36%	French	18,35%
Culham	Spanish	56,30%	French	17,30%	German	13,49%
Frankfurt	English	31,69%	Spanish	24,12%	German	22,89%
Karlsruhe	Spanish	38,57%	English	28,26%	French	21,13%
Luxembourg I	French	33,39%	English	32,19%	German	19,68%
Luxembourg II	English	29,29%	German	27,61%	French	24,56%
Mol	Spanish	31,44%	French	26,63%	Dutch	23,80%
Munich	English	46,13%	French	21,78%	Spanish	14,04%
Varese	Italian	30,34%	French	23,22%	Spanish	22,76%

Table 'LANG 4a': The three most frequently chosen languages in each school as Language 4 on entry into secondary year 4, 2014-2015 school year

Schools	Choice 1		Choice 2		Choice 3	
	Language	%	Language	%	Language	%
Alicante	German	33,81%	French	24,46%	Italian	20,86%
Bergen	German	53,33%	Spanish	40,00%	English	6,67%
Brussels I	Spanish	40,17%	German	18,84%	Dutch	17,73%
Brussels II	Spanish	53,69%	German	16,11%	Dutch	10,74%
Brussels III	Spanish	41,69%	Dutch	18,73%	Italian	16,01%
Brussels IV	Spanish	71,43%	German	14,29%	Dutch	14,29%
Culham	Italian	88,89%	Spanish	11,11%		
Frankfurt	Spanish	60,61%	Italian	22,73%	German	10,61%
Karlsruhe	Spanish	72,00%	Italian	18,00%	French	10,00%
Luxembourg I	German	33,66%	Spanish	29,76%	French	20,49%
Luxembourg II	Spanish	43,96%	German	24,18%	Italian	19,23%
Mol	Spanish	100,00%				
Munich	Spanish	50,36%	French	32,12%	Italian	17,52%
Varese	Spanish	33,78%	French	27,03%	Italian	22,30%

III. DEVELOPMENT OF STAFF

Table 'ENS 1' – Seconded staff

Table 'ENS1' shows the number of seconded staff in each school, i.e. the number of teachers, educational advisers, librarians and executive staff (Directors and Deputy Directors) seconded by the Member States for the 2014-2015 school year.

Alicante	Nursery	Primary	Secondary			Executive Staff	TOTAL
			Teachers	Advisers	Librarians		
	5	21	45	3	0	3	77
Bergen	Nursery	Primary	Secondary			Executive Staff	TOTAL
			Teachers	Advisers	Librarians		
	2	12	26	2	0	3	45
Brussels I	Nursery	Primary	Secondary			Executive Staff	TOTAL
			Teachers	Advisers	Librarians		
	0	59	111	9	1	4	184
Brussels II	Nursery	Primary	Secondary			Executive Staff	TOTAL
			Teachers	Advisers	Librarians		
	8	56	108	9	0	3	184
Brussels III	Nursery	Primary	Secondary			Executive Staff	TOTAL
			Teachers	Advisers	Librarians		
	10	44	101	9	0	3	167
Brussels IV	Nursery	Primary	Secondary			Executive Staff	TOTAL
			Teachers	Advisers	Librarians		
	9	36	27	4	0	4	80
Culham	Nursery	Primary	Secondary			Executive Staff	TOTAL
			Teachers	Advisers	Librarians		
		3	22	1	0	3	29
Frankfurt	Nursery	Primary	Secondary			Executive Staff	TOTAL
			Teachers	Advisers	Librarians		
	3	22	36	3	0	3	67
Karlsruhe	Nursery	Primary	Secondary			Executive Staff	TOTAL
			Teachers	Advisers	Librarians		
	3	14	35	2	0	3	57
Luxembourg I	Nursery	Primary	Secondary			Executive Staff	TOTAL
			Teachers	Advisers	Librarians		
	11	54	84	6	2	3	160
Luxembourg II	Nursery	Primary	Secondary			Executive Staff	TOTAL
			Teachers	Advisers	Librarians		
	7	41	63	6	1	3	121
Mol	Nursery	Primary	Secondary			Executive Staff	TOTAL
			Teachers	Advisers	Librarians		
	2	13	39	3	1	3	61
Munich	Nursery	Primary	Secondary			Executive Staff	TOTAL
			Teachers	Advisers	Librarians		
	2	35	69	6	0	3	115
Varese	Nursery	Primary	Secondary			Executive Staff	TOTAL
			Teachers	Advisers	Librarians		
	3	26	56	5	1	3	94
GRAND TOTALS	TOTAL NURSERY	TOTAL PRIMARY	TOTAL SECONDARY			TOTAL EXECUTIVE STAFF	TOTAL
			Teachers	Advisers	Librarians		
		65	436	822	68	6	44

If the seconded staff of the Office of the Secretary-General of the European Schools (8) and the Bursars of the European Schools (9) are added, the total number of seconded staff is **1458**. ❖

Table 'ENS 1a' – Seconded teaching staff

Table 'ENS 1a' shows the number of members of the teaching staff seconded by each Member State in the system as a whole and in each school for the 2014-2015 school year. It also shows the percentage of the total seconded teaching staff from each Member State.

Countries	Total	%	Ali	Berg	Br1	Br2	Br3	Br4	Cul	Frf	Kar	Lu1	Lu2	Mol	Mun	Var
Germany	231	17,62%	15	2	14	19	15	11	10	23	24	15	16	8	41	18
Austria	21	1,59%			5	1	1	2		3		2	1		5	1
Belgium	163	12,32%	9	6	21	26	26	16		3	2	19	12	14	4	5
Bulgaria	5	0,37%			1		1	3								
Denmark	28	2,11%			13				1				13		1	
Spain	80	6,05%	20	1	16	2	17		1	2	1	11	1	1	4	3
Estonia	3	0,23%				2						1				
Finland	30	2,27%	1			15						13			1	
France	191	14,44%	5	5	29	24	23	16	5	7	12	20	15	9	9	12
UK	156	11,80%	9	7	20	15	16	4	5	9	8	15	13	6	18	11
Greece	32	2,41%					20						10		2	
Hungary	12❖	0,90%			9								3			
Ireland	59	4,45%	5	2	9	8	8	5	1	3	2	5	3	2	2	4
Italy	94	7,11%			15	14	3	9	1	8	1	1	13		10	19
Latvia	3	0,22%				2						1				
Lithuania	7	0,53%				5						2				
Luxembourg	15	1,13%	3			1	2			1		2	4		2	
Malta	4	0,30%			3								1			
Netherlands	74	5,60%		17		8	9	4	1	1	2	9		12	5	6
Poland	22	1,67%			13							8			1	
Portugal	28	2,12%	1			13	1					11				2
Romania	2	0,15%						2								
Slovakia	11	0,83%	1			1	3			1		2	1			2
Slovenia	3	0,23%			2								1			
Sweden	35	2,65%	2			16						12		2	1	2
Czech Republic	14	1,06%					10						4			
TOTAL	1311	100,16%	71	40	170	172	155	72	25	61	52	149	111	54	106	85

In June 2014, the Board of Governors approved the new cost sharing principles. The statistics on the beginning of the new school year in September 2014 do not yet take account of these new principles.

At the beginning of the 2014-2015 school year in September 2014, the number of seconded teachers' posts remaining unfilled by the Member States was 195, a total of 28 posts more than the previous school year, breaking down into 91 Anglophone posts, 19 Francophone posts and 11 German posts.

For the 2015-2016 school year, 3 posts for subjects taught in DE, EN or FR (Physical Education, Music, Art) might be filled by non-native speakers, as might 2 posts of educational adviser.

In accordance with the provisions of the document on the checking of linguistic competence: Foreign languages (L2, 3, 4), Human sciences (history and geography), Economics, Mathematics, Science subjects, 24 other posts might be filled by non-native speaker teachers (16 non-native speaker Anglophones, 5 non-native speaker Francophones, 2 non-native German speaker and 1 non-native Dutch speakers).

❖ *This version of the above table was presented to the Board of Governors at its December 2014 meeting. During the meeting an amendment had to be made with respect to the number of Hungarian seconded staff. Thus, 12, the number indicated, is incorrect. The number of Hungarian seconded teachers in post in September 2014 is in fact 14, not 12.*

Table 'ENS2': Development of locally recruited teachers – 2011-2014

Table 'ENS2' gives for each year since 2011 a number of locally recruited teachers for each school. This number corresponds to full-time teacher equivalents, i.e. with a teaching load of 21 weekly periods in the secondary and 25.5 weekly hours in the primary.

Schools	2011	2012	2013	2014	Difference between 2011 and 2014	
	Locally recruited teachers	Locally recruited teachers	Locally recruited teachers	Locally recruited teachers	Locally recruited teachers	%
Alicante	22	21	24	23	1	4,55%
Bergen	20	21	21	22	2	10,00%
Brussels I	56	56	49	72	16	28,57%
Brussels II	56	55	75	69	13	23,21%
Brussels III	56	57	49	42	-14	-25,00%
Brussels IV	20	27	50	72	52	260,00%
Culham	26	28	28	28	2	7,69%
Frankfurt	37	42	47	63	26	70,27%
Karlsruhe	33	33	40	38	5	15,15%
Luxembourg I	72	69	75	73	1	1,39%
Luxembourg II	13	51	61	64	51	392,31%
Mol	13	17	16	17	4	30,77%
Munich	64	66	70	70	6	9,38%
Varese	43	45	53	54	11	25,58%
Total	531	588	658	707	176	33,14%

**Table 'ENS 2a': Seconded staff and locally recruited teachers (full-time equivalent)
for the 2014-2015 school year**

	Seconded teachers	Ed. Advissrs/ Librarians	Executive staff	Total Seconded staff		Loc. recr. teachers Primary	Loc. recr. teachers Secondary	Loc. recr. teachers religion and ethics	Total Loc. recr. teachers		Total
Alicante	71	3	3	77	77%	7	14	2	23	23%	100
Bergen	40	2	3	45	67%	7	14	1	22	33%	67
Brussels I	170	10	4	184	71%	27	36	9	72	28%	256
Brussels II	172	9	3	184	73%	22	39	8	69	27%	253
Brussels III	155	9	3	167	80%	17	18	7	42	20%	209
Brussels IV	72	4	4	80	53%	21	45	6	72	47%	152
Culham	25	1	3	29	51%	4	22	2	28	49%	57
Frankfurt	61	3	3	67	52%	28	31	4	63	48%	130
Karlsruhe	52	2	3	57	60%	12	23	3	38	40%	95
Luxembourg I	149	8	3	160	69%	24	43	6	73	31%	233
Luxembourg II	111	7	3	121	65%	20	41	3	64	35%	185
Mol	54	4	3	61	78%	7	9	1	17	22%	78
Munich	106	6	3	115	62%	28	36	6	70	38%	185
Varese	85	6	3	94	64%	23	27	4	54	36%	148
Total	1323	74	44	1441	67%	247	398	62	707	33%	2148

Table ENS2a shows the total number of seconded staff in each school, i.e. the number of teachers, educational advisers, librarians and executive staff (Directors and Deputy Directors) seconded by the Member States for the 2014-2015 school year.

The table also gives a figure for the number of locally recruited teachers for each school. This number corresponds to the number mentioned in Table 'ENS2'. However, it also gives a breakdown of primary and secondary locally recruited teachers and of religion/ethics locally recruited teachers.

Table 'ENS3' – Pupil to Educational Adviser ratio

Table 'ENS3' gives information about the pupil to educational adviser ratio in the secondary schools.

	2011		2012		2013		2014	
	Ed. Adv.	Pupils-Ed. Adv. ratio	Ed. Adv.	Pupils-Ed. Adv. ratio	Ed. Adv.	Pupils-Ed. Adv. ratio	Ed. Adv.	Pupils-Ed. Adv. Ratio
Alicante	3	183	3	184	3	185	3	178
Bergen	1	322	1	313	2	154	2	153
Brussels I	10	180	10	180	10	172	9	195
Brussels II	8	211	9	192	9	191	9	183
Brussels III	9	192	9	184	9	179	9	176
Brussels IV	1	452	2	210	2	351	4	237
Culham	2	226	1	440	1	418	1	405
Frankfurt	3	181	2	282	2	290	3	218
Karlsruhe	3	174	1	521	0	522	2	243
Luxembourg I	12	189	8	169	9	151	6	231
Luxembourg II			5	203	6	176	6	183
Mol	3	150	3	143	3	139	3	141
Munich	5	200	4	260	5	223	6	196
Varese	5	143	5	149	5	153	5	155
Total	65	188	63	200	66	194	68	194

Table 'PAS 1' – Administrative and ancillary staff

Table 'PAS 1' shows the number of posts of administrative and ancillary staff in each school and at the Office of the Secretary-General for the years *2011 to 2014* according to the organigrams appearing in the budgets. It also shows the percentage difference between the number of such staff members at the beginning and end of that period.

Table PAS 1: Number of posts of administrative and ancillary staff from 2011 to 2014 according to the organigrams appearing in the budgets

Schools	2011	2012	2013	2014	Diff. 2011-2014 (%)
Alicante	19,50	22,50	22,50	23,25	19,23
Bergen	14,50	15,50	15,25	14,50	0,00
Brussels I	37,45	40,95	43,72	46,12	23,15
Brussels II	38,00	41,00	37,30	28,80	-24,21
Brussels III	35,75	38,75	38,75	38,75	8,39
Brussels IV	18,00	23,50	24,60	29,60	64,44
Culham	16,50	14,50	14,50	14,50	-12,12
Frankfurt	19,00	19,00	19,50	19,50	2,63
Karlsruhe	19,10	21,90	21,90	21,90	14,66
<i>Luxembourg:</i>	<i>65,50</i>	<i>69,30</i>	<i>82,48</i>	<i>86,48</i>	<i>32,03</i>
Luxembourg I	44,00	42,30	42,30	44,80	1,81
Luxembourg II	21,50	27,00	40,18	41,68	93,86
Mol	15,00	20,00	20,11	16,61	10,73
Munich	30,00	32,50	32,50	32,00	6,67
Varese	23,47	30,43	30,43	27,43	16,87
OSGES	37,50	39,50	39,50	47,50	26,67
TOTAL	389,27	429,33	443,04	446,94	14,81

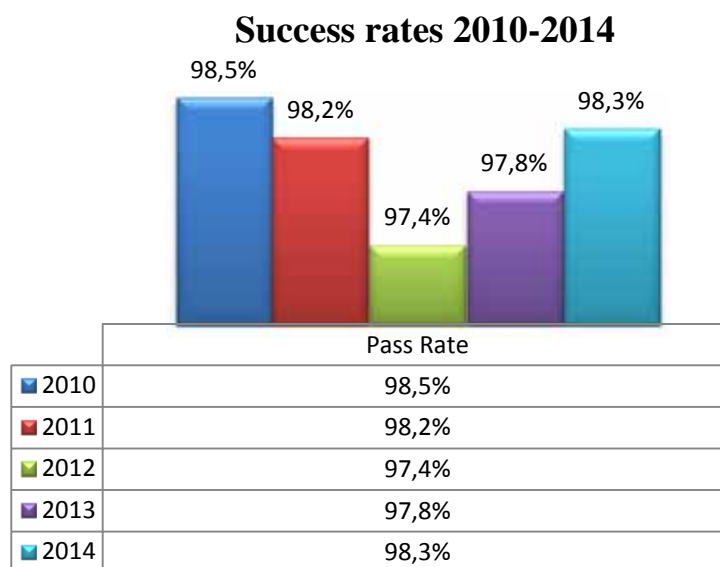
Posts of nursery assistant are included in this table (**2011: 73.25 – 2012: 67.01 – 2013: 66.8 – 2014: 69.06**). The year on year variations in the number of AAS posts are due largely to posts of nursery assistant, which are created or discontinued according to the number of pupils in the nursery classes, in accordance with the relevant decisions of the Board of Governors.

The **24.45** posts of auxiliary staff are included in the above table.

IV. 2014 BACCALAUREATE RESULTS

The European Baccalaureate 2014 session was chaired by Mr Kiril Bankov (Bulgaria). A total of 1807 pupils from 13 European Schools and four accredited schools (*European Schooling Helsinki, École internationale de Manosque, Scuola per l'Europa di Parma* and *École européenne de Strasbourg*) were entered for the 55th session of the European Baccalaureate. 18 candidates abandoned the examinations session. 31 candidates failed, therefore 50 candidates were not awarded the European Baccalaureate Diploma. 17 candidates were partially absent for illness during the written and/or oral examinations and had to take substitute examinations in June 2014. 11 candidates were absent due to participating in National Examinations. One candidate was allowed to take part in an extraordinary session in September 2014 due to personal circumstances.

Global pass rate for 2014 Baccalaureate: 98,3%.



A comparison over five years of success rates shows that the situation is relatively stable.

School	2010	2011	2012	2013	2014
AL	100,0%	100,0%	97,0%	96,7%	100,0%
BE	97,9%	89,4%	92,7%	95,2%	97,9%
Br I	99,0%	99,1%	98,8%	97,9%	98,8%
Br II	99,6%	98,1%	94,9%	94,2%	97,6%
Br III	99,5%	96,9%	97,8%	99,0%	100,0%
CU	98,3%	96,3%	100,0%	100,0%	100,0%
FR	100,0%	100,0%	100,0%	100,0%	98,7%
KA	95,9%	97,5%	97,4%	98,6%	98,8%
LU I	97,3%	99,2%	97,8%	97,8%	95,6%
LU II				99,1%	97,2%
MO	100,0%	95,4%	95,1%	96,3%	98,5%
MU	96,7%	100,0%	98,1%	100,0%	100,0%
VA	99,0%	100,0%	100,0%	97,5%	96,3%
HE				100,0%	100,0%
MA				100,0%	100,0%
PA	100,0%	100,0%	90,9%	100,0%	97,1%
ST					96,7%
TOTAL	98,5%	98,2%	97,4%	97,8%	98,3%

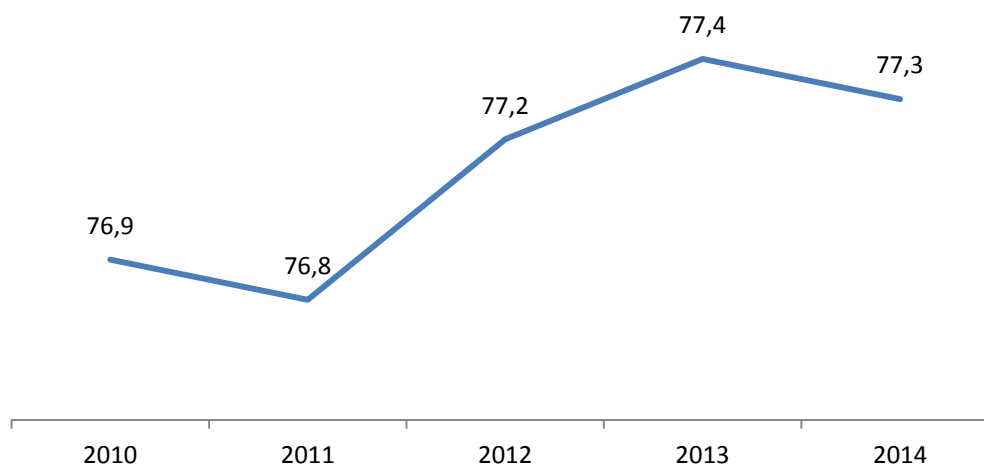
The following table shows the success rate in the different language sections. This year, the success rates by language section ranged between 88,9% and 100 %. Due to small numbers of bachelors in some sections the results are not always statistically comparable.

Success rate by language section

Language section	Number of pupils	Passed	Success rate
DA	36	36	100,0%
DE	310	306	98,7%
EL	64	63	98,4%
EN	421	414	98,3%
ES	97	96	99,0%
FI	29	29	100,0%
FR	450	442	98,2%
HU	11	11	100,0%
IT	150	147	98,0%
NL	134	132	98,5%
PL	22	21	95,5%
PT	36	32	88,9%
SV	29	29	100,0%
Total	1789	1758	98,3%

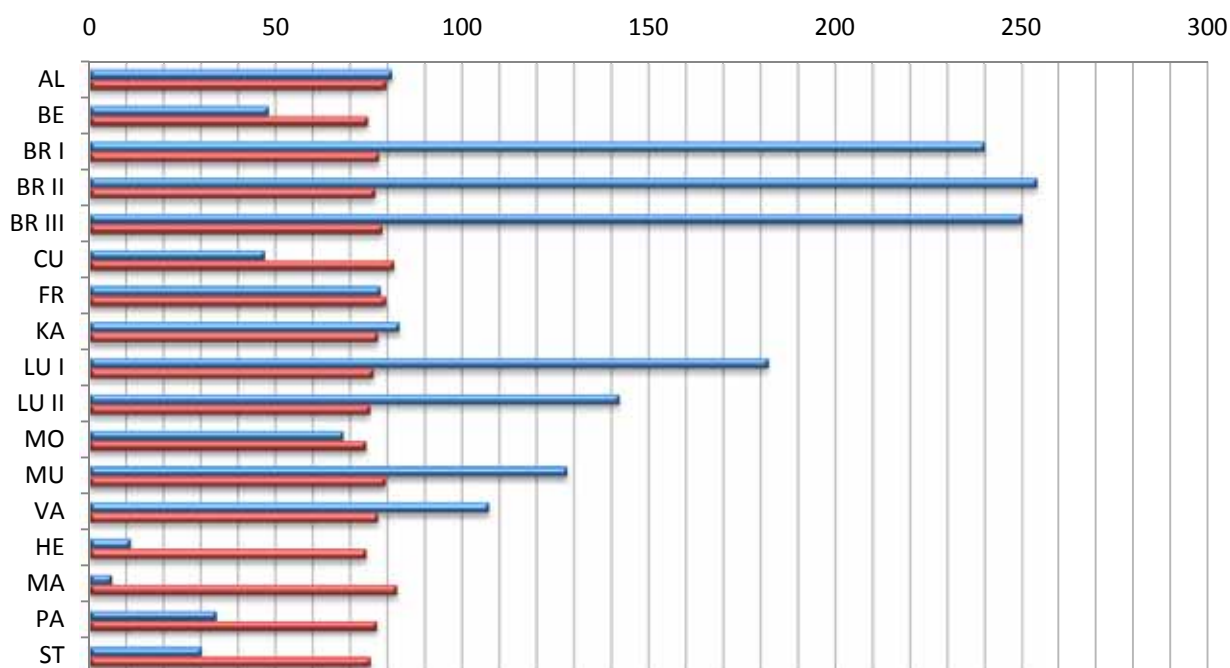
For all the candidates who participated in the 2014 session of the Baccalaureate, the average Final Marks amounted to 77,3. A comparison of the Final Marks shows a slight rise throughout the past five years.

Overall average of past five years



This year the average Final Mark ranged between 74,1 and 82,4.

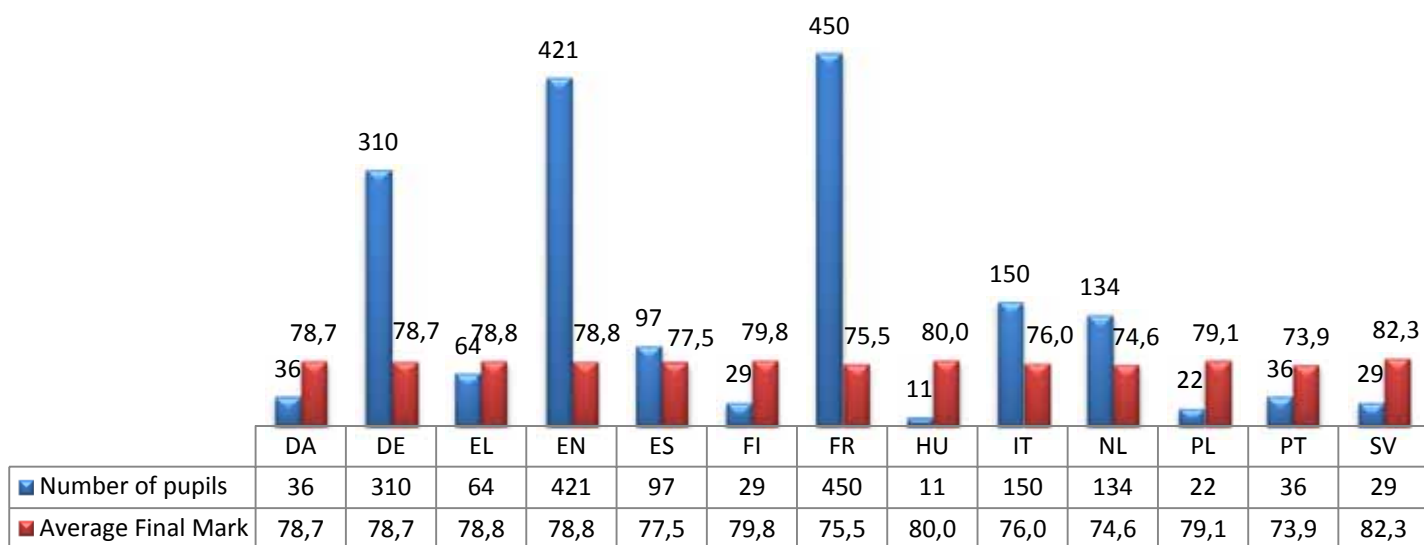
Final Mark average per school



	ST	PA	MA	HE	VA	MU	MO	LU II	LU I	KA	FR	CU	BR III	BR II	BR I	BE	AL
■ Number of pupils	30	34	6	11	107	128	68	142	182	83	78	47	250	254	240	48	81
■ Average Final Mark	75,3	77,0	82,4	74,1	77,3	79,3	74,1	75,2	76,1	77,2	79,4	81,6	78,5	76,5	77,5	74,6	79,5

The average Final Mark ranged between 73,9 and 82,3 depending on the language section. In certain sections with small number of candidates, the average could be regarded as less statistically significant.

Final Mark average per language section

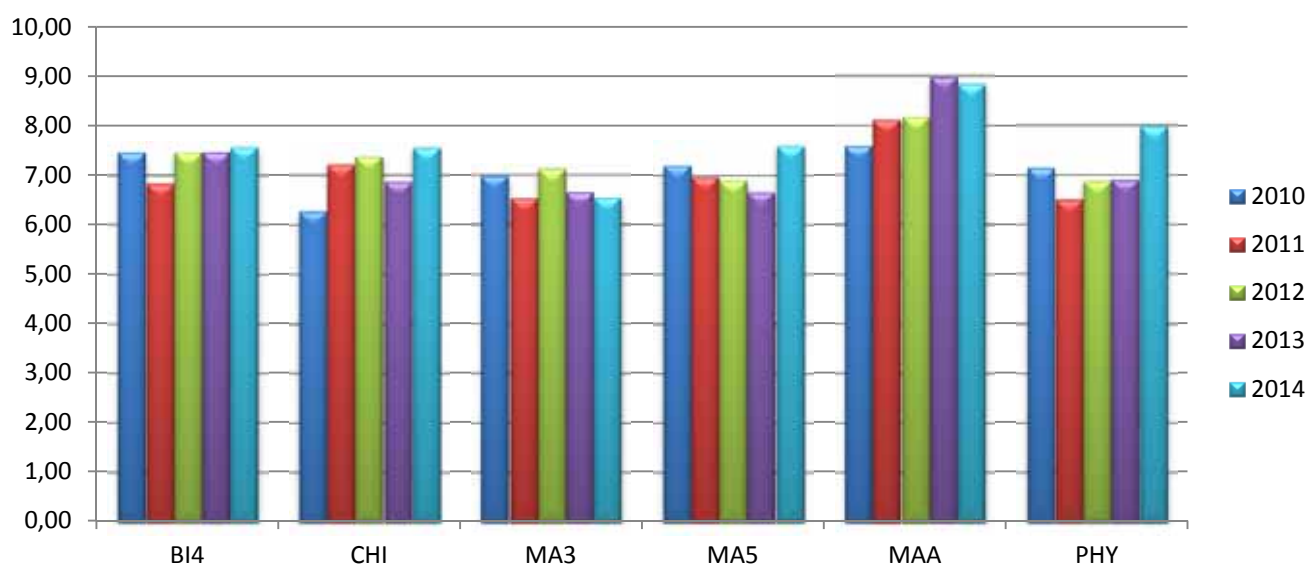


This year, 161 Students Without A Language Section registered for the European Baccalaureate session. 157 pupils sat the examinations.

In the following table we can see the performance of SWALS pupils per subject compared to pupils in their language sections. As it can be observed there is no significant deviation of marks even for those subjects taught through Language II (in yellow) where one could expect that SWALS pupils would score higher.

Subject	bi4	chi	eco	ge4	hi4	ma3	ma5	maa	ph4	phy
SWALS	7,58	7,57	7,29	7,61	7,41	6,56	7,61	8,85	8,01	8
OTHER	7,6	7,39	7,41	7,63	7,66	6,7	7,29	8,3	8,15	7,5
ALL	7,59	7,4	7,38	7,62	7,64	6,68	7,32	8,34	8,13	7,52

SWALS - average Final Mark for Scientific subjects

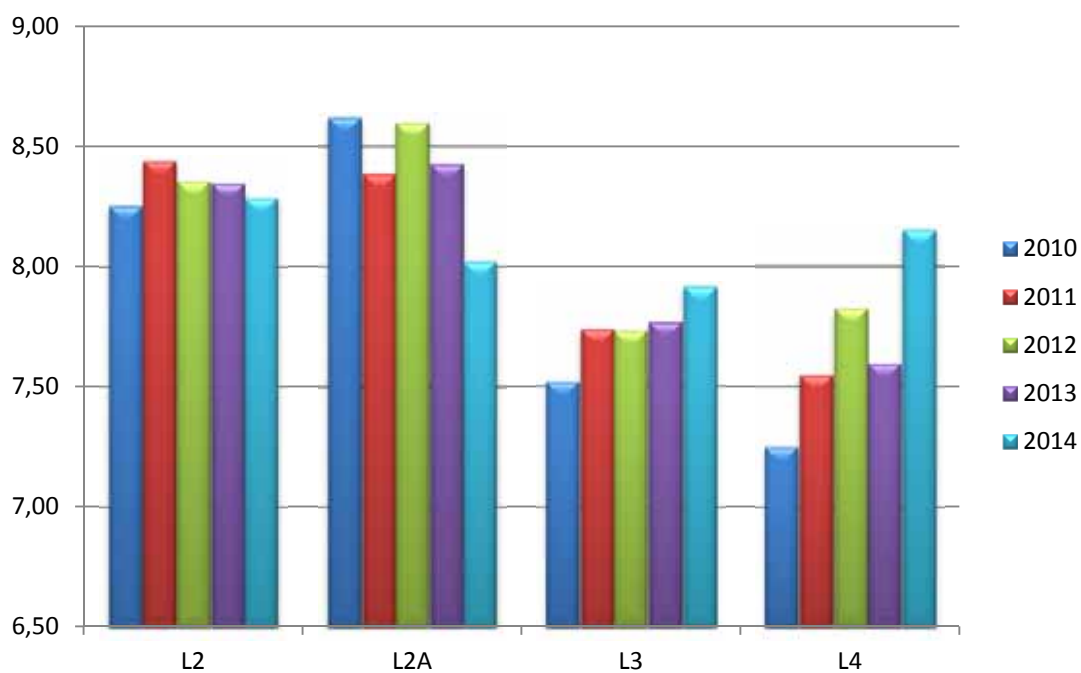


In the next graph we can see their performance in Languages II, III and IV. We can observe that their performance in Language II is higher than the average.

Final Mark average for I2, I3 and I4



SWALS - average Language Final Marks for the past five years



Number of SWALS pupils:

Subject	2010	2011	2012	2013	2014
L2	87	86	116	96	139
L2a	10	19	19	12	19
L3	35	34	56	43	72
L4	24	18	24	28	27

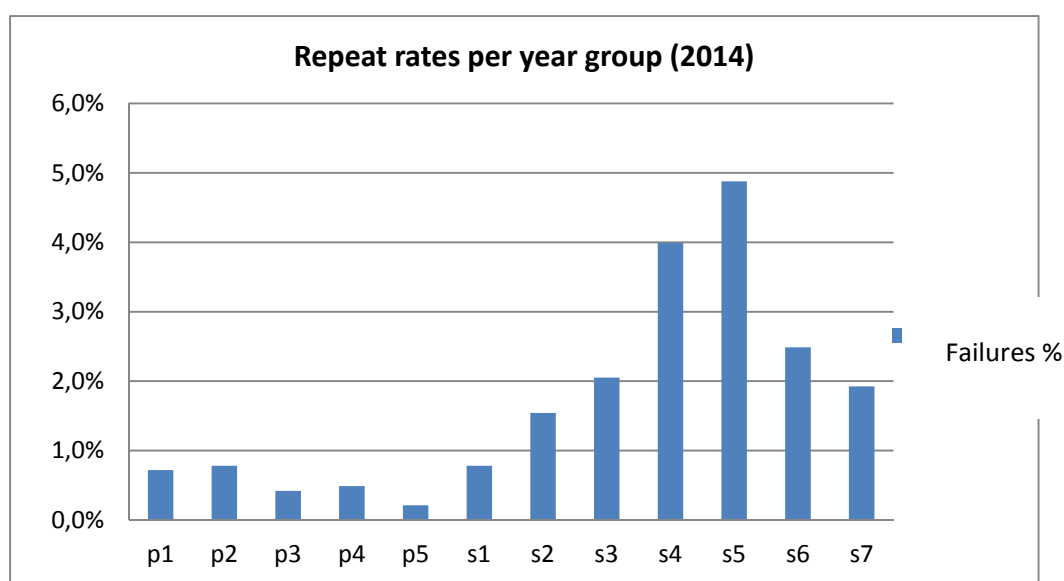
V. REPEAT RATES IN 2014

In 2013-2014, 24 635 primary and secondary pupils received an end-of-year school report. The table below shows the total number of pupils per year group for all 14 schools, the number of pupils repeating in relation to that total number and the percentage of repeats which that represents in relation to each year group, comparing the 2011-2012, 2012-2013 and 2013-2014 school years.

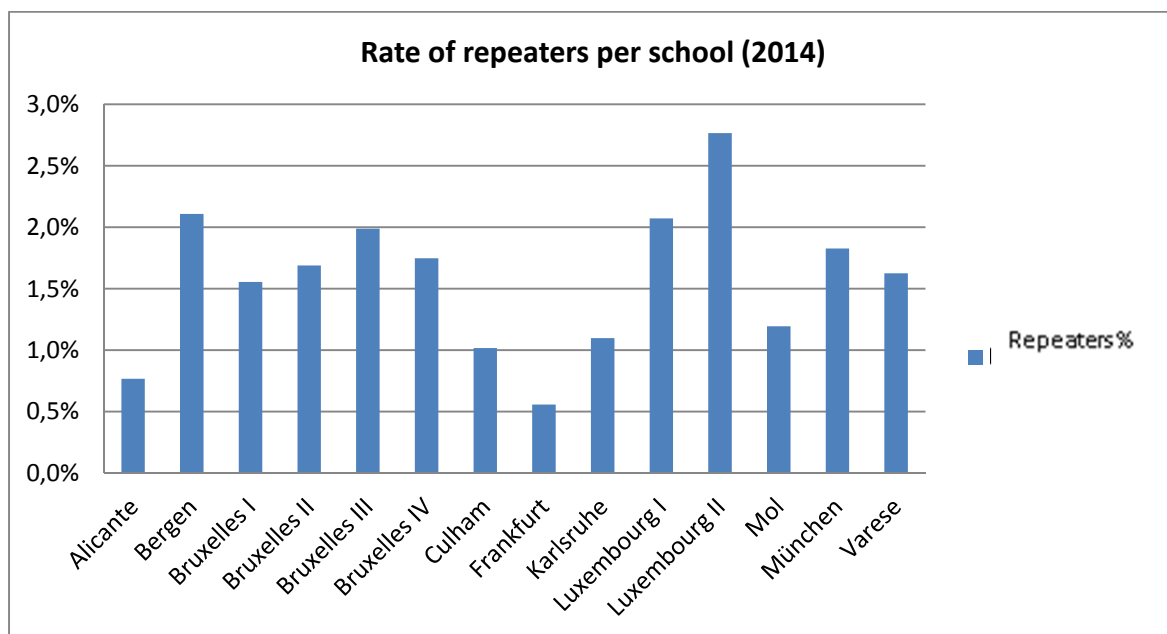
Year	2012			2013			2014		
	Pupils	Repeaters	Repeat rate	Pupils	Repeaters	Repeat rate	Pupils	Repeaters	Repeat rate
p1	1 628	9	0.6%	1 701	6	0.4%	1 805	13	0.7%
p2	1 625	8	0.5%	1 761	8	0.5%	1 792	14	0.8%
p3	1 609	14	0.9%	1 748	3	0.2%	1 903	8	0.4%
p4	1 719	10	0.6%	1 788	1	0.1%	1 839	9	0.5%
p5	1 686	7	0.4%	1 787	5	0.3%	1 889	4	0.2%
s1	1 918	37	1.9%	1 926	21	1.1%	1 918	15	0.8%
s2	1 878	33	1.8%	1 937	26	1.3%	1 944	30	1.5%
s3	1 936	42	2.2%	1 809	26	1.4%	1 901	39	2.1%
s4	1 863	117	6.3%	1 819	57	3.1%	1 803	72	4.0%
s5	1 748	86	4.9%	1 794	63	3.5%	1 784	87	4.9%
s6	1 589	54	3.4%	1 754	32	1.8%	1 769	44	2.5%
s7	1 442	30	2.1%	1 521	26	1.7%	1 714	33	1.9%
TOTAL	20 641	447	2.2%	21 345	274	1.3%	24 635	423	1.7%

It can be observed from the table above that the average repeat rate for the 2013-2014 school year stands at 1.7 % (423 pupils). The rate for the 2011-2012 school year was 2.2% and for the 2012-2013 school year it was 1.3%.

The repeat rate is not uniform across the year groups. The following graph brings this variability clearly to light and also the year groups characterised by a higher repeat rate.



The table below shows the percentage average of repeaters for each school as a whole, all sections taken together, and for the primary and secondary cycles combined.



It can be observed that for 2013-2014, the average repeat rate by school ranges between 0.6% and 2.8% (only those schools with a complete structure have been considered). In 2011-2012 the same rate ranged between 0.9% and 3.2% and in 2012-2013 between 0.3% and 1.8%.

The table below shows the number of repeaters in relation to the total number of pupils in the secondary cycle and, amongst them, the number of pupils who left the European School system and the percentage which that represents in relation to the total number of pupils.

Secondary	Total number of pupils per year group (secondary)	Repeaters	Repeaters who left the European Schools	Percentage of repeaters who left the European Schools in relation to the total population in the year group	Percentage of repeaters who left the European Schools in relation to repeaters in the year group
s1	1 918	15	5	0.3%	33.3%
s2	1 944	30	10	0.5%	33.3%
s3	1 901	39	9	0.5%	23.1%
s4	1 803	72	21	1.2%	29.2%
s5	1 784	87	28	1.6%	32.2%
s6	1 769	44	18	1.0%	40.9%
s7	1 714	33	8	0.5%	24.2%
Total	12 833	320	99	0.8%	30.9%

Of the 320 pupils who were declared repeaters in the secondary school, 99 left the European School system, corresponding to 30.9% of repeaters. In 2011-2012 the figure was 41% and in 2012-2013 it was 32.7%.

Even though the percentage of repeaters at the end of the 2013-2014 school year appears higher than the figure recorded the previous year, it nevertheless remains appreciably lower than that recorded for previous years.

In the context of analysis of the statistics, the Pedagogical Development Unit was responsible for following up on repeat rates and for introducing the 19 measures to combat school failure approved by the Board of Governors at its December 2010 meeting. The schools were able to implement those measures as from the 2010-2011 school year.

In December 2010, the Board of Governors also revised several articles of the General Rules connected with Class Council meetings (Revision of Article 62 of the General Rules of the European Schools, 2010-D-189-en-4), bearing the following objectives in mind:

- Simplification of the rules as a whole through abolition of the system of promotion indices / weightings.
- Simplification of calculation of the average.
- Allowing the Class Council to take account to a greater extent of the 'student's interest'.
- Clarification of the appeal procedures.
- Harmonisation of the provisions of the rules applicable to the primary and secondary cycles.
- Clarification of certain key concepts such as 'new fact'

An initial report on follow-up on implementation was presented to the Board of Governors at its December 2011 meeting and was entitled: 'Follow-up on the report on the analysis of repeat rates and external evaluation of competences acquired by pupils of the European Schools system' (2011-09-D-50-en-3).

In that same context, the Board of Governors approved the changes made to old Article 60.3 (new Article 59) of the General Rules, which seek to give a more precise definition of the terminology of the A and B marks used for assessment purposes in the secondary cycle (years S4-S7).

A second report on school failures and repeat rates – 2013-01-D-56-en-3 – was presented to the Board of Governors at its April 2013 meeting. That report also contains a follow-up report at the schools' level on implementation of the 19 special measures to combat repeating adopted by the Board of Governors at its October 2009 meeting.

In 2013, the Board of Governors approved the amendments made to Article 61 of the General Rules, which are designed to give a more precise definition in the area of the decision-making power of Class Councils with respect to pupils' promotion at the end of the year.

It would seem that application of the 19 measures and amendment of the General Rules have had an effect on the overall repeat rate in the European Schools.

In the light of the above tables and figures, it was also noted that the highest repeat rate is still to be found in secondary years 4 and 5. Against that background, those years having

been detected as recurrently the most critical, the phenomenon was examined in a third report on school failures and repeat rates – 2013-09-D-48-en-2 – which was submitted to the Joint Teaching Committee at its February 2014 meeting. In addition to the percentage of pupils repeating a year, that report mentions in particular, through its annexes, the repeat rate by subject, by section and by school in years S4 and S5.

In a fourth report – 2014-09-D-44-en-3 – presented to the Joint Teaching Committee at its February 2015 meeting, S6 was also analysed in terms of the failure rate by subject, by section and by school, on the same basis as for S4 and S5 in the previous report.

Data on the appeals lodged with Class Councils were also produced.

At its February meeting, the Joint Teaching Committee approved that fourth report. In order to produce a more finely honed analysis, the Joint Teaching Committee gave a mandate for the setting up of a Working Group, whose composition is as follows:

- The Deputy Secretary-General
- 2 Inspectors
- 1 Director
- 1 Deputy Director for the secondary cycle
- 1 Teachers' representative
- 1 Interparents representative
- 1 representative of the European Commission

This Working Group will attempt to analyse the statistics and to respond to the questions asked and requests made by the different members.