

Schola Europaea

Office of the Secretary-General

Ref.: 2011-10-D-30-en-2

Orig.: FR

Facts and figures on the beginning of the 2011-2012 school year in the European Schools

Board of Governors of the European Schools

Meeting in Brussels on 6, 7 and 8 December 2011

INTRODUCTION

This document contains a number of facts and figures, as at 15 October 2011, on the situation of the European Schools (type I) after the beginning of the 2011-2012 school year, in terms of pupil population, of choices of languages by pupils and of staff (seconded, locally recruited teachers and AAS).

This document also includes figures on pupils' repeat rate for the 2010-2011 school year and the 2011 Baccaalaureate results.

These facts and figures will subsequently be incorporated into the Secretary-General's annual report, which will be presented to the Board of Governors in April 2012.

I. DEVELOPMENT OF THE PUPIL POPULATION

1. Total pupil population

Table EL1 shows pupil numbers for each school and the total numbers for the system as a whole, year on year, for the period 2008-2011 and the percentage variation year on year over the reference period. The last column shows the percentage variation in pupil numbers over the period as a whole.

Table EL 1: Pupil population from 2008 to 2011

Schools	2008		2009		2010		2011		Difference between 2008 and 2011	
	Population	%	Population	%	Population	%	Population	%	Population	%
Alicante	1029	1,17%	1020	-0,87%	1035	1,47%	1027	-0,77%	-2	-0,19%
Bergen	565	1,98%	586	3,71%	608	3,75%	581	-4,44%	16	2,83%
Brussels I	3057	0,39%	3112	1,79%	3074	-1,22%	3131	1,85%	74	2,42%
Brussels II	2904	1,43%	3030	4,33%	3089	1,94%	3176	2,82%	272	9,37%
Brussels III	2649	1,06%	2811	6,11%	2902	3,23%	2919	0,59%	270	10,19%
Brussels IV	438		594		809	36,19%	1059	30,90%	621	141,78%
Culham	835	0,96%	835	0,00%	807	-3,35%	745	-7,68%	-90	-10,78%
Frankfurt	1053	7,66%	1085	3,03%	1085	0,00%	1136	4,70%	83	7,88%
Karlsruhe	979	-2,19%	976	-0,30%	943	-3,38%	934	-0,95%	-45	-4,60%
Luxembourg I	3437	1,80%	3468	0,90%	3475	0,20%	3579	2,99%	142	4,13%
Luxembourg II	888	-1,00%	910	2,47%	943	3,62%	957	1,48%	69	7,77%
Mol	718	9,28%	752	4,73%	789	4,92%	767	-2,79%	49	6,82%
Munich	1756	5,40%	1848	5,23%	1901	2,86%	1990	4,68%	234	13,33%
Varese	1341	1,82%	1304	-2,75%	1318	1,07%	1366	3,64%	25	1,86%
Total	21649	2,98%	22331	3,15%	22778	2,00%	23367	2,59%	1718	7,94%

The total population of the European Schools on 15 October 2011 was 23,367 pupils, representing an average growth rate of 2.59% compared with 2010, although this covers markedly different situations according to the Schools.

63.42% of the total pupil population is to be found in the Brussels (44.01%) and Luxembourg (19.41%) Schools.

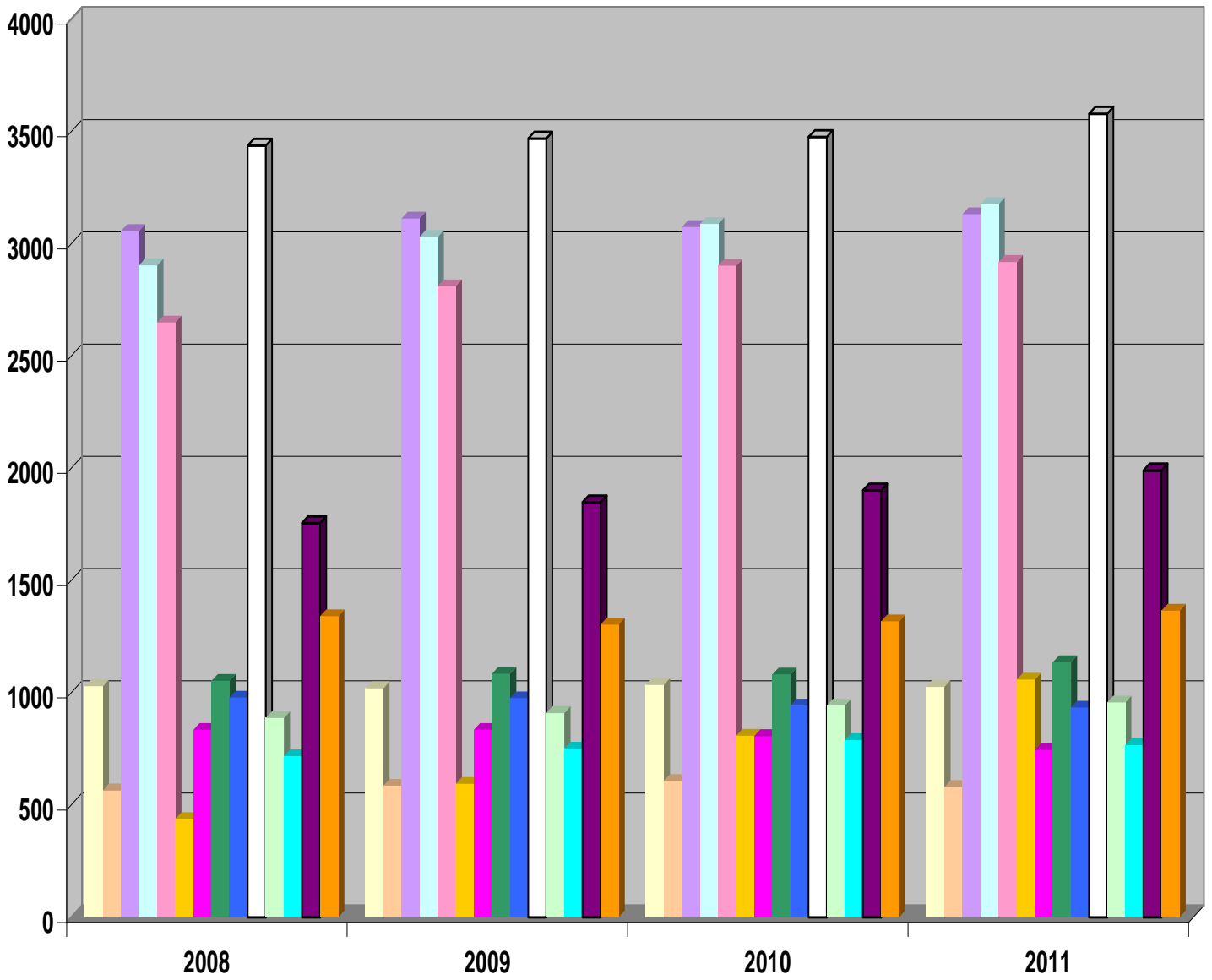
In Luxembourg, the Luxembourg I School is continuing to cater for all secondary pupils, pending the availability of the Mamer/Bertrange School, scheduled for 2012.

In Brussels, the three old Schools continue to be overcrowded, while the Brussels IV School has 1059 pupils on roll (up by almost 31% on last year) at its Berkendael transition site.

The Frankfurt and Munich Schools are recording high growth rates as a result of the increase in the number of staff of the European Central Bank and the European Patent Office.

The April 2007 decision of the Board of Governors to phase out the Culham School from 2010 has led to an 11% fall in pupil numbers in two years, no further pupils being admitted to the two nursery classes (N1 and N2).

The project to transform the school into an Academy (type II school) coming under the English education system came to nothing in the end. Details of a project to set up a Free School which would share the site of the European School, Culham are being worked out, with the aim of opening the Free School in September 2012.



a. Pupil population by category

Tables EL 2a, EL 2b and EL 2c show, for each year from 2008 to 2011, the number of pupils in the three categories and the percentage for which each category accounts in relation to the total number of pupils in each school. The last two columns in each of these tables give the variation, in absolute and percentage terms, in pupil numbers in the various categories in each school and in the system as a whole over the same period.

Table EL 2a: Pupil population from 2008 to 2011, Category I population

Schools	2008		2009		2010		2011		Difference between 2008 and 2011	
	Population	%	Population	%	Population	%	Population	%	Population	%
Alicante	423	41,11%	430	42,16 %	463	44,73 %	488	47,51 %	65	15,37%
Bergen	95	16,93%	99	16,89 %	106	17,43 %	109	18,76 %	14	14,74%
Brussels I	2683	87,82%	2.767	88,91 %	2.772	90,17 %	2869	91,63 %	186	6,93%
Brussels II	2665	91,83%	2809	92,77%	2.884	93,36 %	2965	93,35 %	300	11,26%
Brussels III	2409	90,97%	2624	93,38%	2.725	93,90 %	2760	94,55 %	351	14,57%
Brussels IV	416	95,85%	577	97,47%	789	97,53 %	1032	97,45 %	616	148,08%
Culham	114	13,65 %	106	12,69%	99	12,27 %	92	12,34 %	-22	-19,30%
Frankfurt	611	58,02 %	680	62,67%	721	66,45 %	780	68,66 %	169	27,66%
Karlsruhe	158	16,12 %	167	17,16%	168	17,82 %	171	18,30 %	13	8,23%
Luxembourg I	2722	79,17 %	2.783	80,25%	2.818	81,07 %	2934	81,97 %	212	7,79%
Luxembourg II	661	74,86 %	687	76,33%	735	77,94 %	756	78,99 %	95	14,37%
Mol	146	20,33 %	140	18,64%	141	17,87 %	138	17,99 %	-8	-5,48%
Munich	1272	72,48 %	1.371	74,23%	1.439	75,70 %	1527	76,73 %	255	20,05%
Varese	714	53,20 %	712	54,60%	753	57,13 %	775	56,73 %	61	8,54%
Total	15089	69,75 %	15952	71,50 %	16.613	72,93%	17396	74,44%	2.307	15,29%

Category I pupils are mainly children of officials and contract staff (at least one year) of the EU institutions and of the staff of the Schools, and of the European Patent Office in the case of Munich.

The percentage of pupils belonging to Category I has been steadily increasing in recent years and this category now accounts for over 74% of the pupil population of the system as a whole.

The Brussels and Luxembourg Schools, where there are large numbers of EU officials and the inadequacy of the infrastructure requires a restrictive enrolment policy to be enforced for Categories II and III pupils, have the highest percentage of Category I pupils – **over 90% in the four Brussels Schools** – whereas the schools located in places where the number of EU officials is small have a far lower percentage of such pupils.

At Varese, just over half of the pupils are Category I pupils, while at Munich pupils belonging to this category, the vast majority of whom are children of staff of the European Patent Office, account for over three quarters of the pupil population.

In the two newer Schools outside the Brussels/Luxembourg region – Alicante and Frankfurt – the increase in the percentage of this category of pupil has continued, with Frankfurt now having reached 68.66%.

This upward trend is, moreover, continuing at Frankfurt, where the number of applications for enrolment of children of staff of the European Central Bank is increasing steadily.

It should also be pointed out that in Brussels, only 40% of Category I pupils attend the European Schools. This gives an idea of the infrastructure which would be required if entitled pupils not currently attending the European Schools were to apply for enrolment.

Table EL 2b: Pupil population from 2008 to 2011, Category II population

Schools	2008		2009		2010		2011		Difference between 2008 and 2011	
	Population	%	Population	%	Population	%	Population	%	Population	%
Alicante	3	0,29%	1	0,10%	3	0,29 %	3	0,29 %	0	0,00%
Bergen	3	0,53%	3	0,51%	3	0,49 %	0	0,00 %	-3	-100,00%
Brussels I	56	1,83%	57	1,83%	53	1,72 %	53	1,69 %	-3	-5,36%
Brussels II	101	3,48%	100	3,30%	101	3,27 %	106	3,33 %	5	4,95%
Brussels III	44	1,66%	46	1,64%	48	1,65 %	50	1,71 %	6	13,64%
Brussels IV	15	3,46%	9	1,52%	10	1,24 %	13	1,22 %	-2	-13,33%
Culham	41	4,91%	20	2,40%	21	2,60 %	25	3,35 %	-16	-39,02%
Frankfurt	91	8,64%	88	8,11%	88	8,11 %	107	9,41 %	16	17,58%
Karlsruhe	284	28,98%	282	28,98%	267	28,31 %	267	28,58 %	-17	-5,99%
Luxembourg I	211	6,14%	195	5,62%	191	5,49 %	181	5,05 %	-30	-14,22%
Luxembourg II	106	12,00%	76	8,44%	74	7,85 %	69	7,21 %	-37	-34,91%
Mol	23	3,20%	19	2,53%	21	2,66 %	15	1,95 %	-8	-34,78%
Munich	128	7,29%	124	6,71%	132	6,94 %	131	6,58 %	3	2,34%
Varese	235	17,51%	190	14,57%	172	13,05 %	177	12,95 %	-58	-24,68%
Total	1341	6,20%	1.210	5,42%	1.184	5,20 %	1197	5,12 %	-144	-10,74%

Category II pupils are admitted under the terms of agreements entered into between the Schools and certain organisations and companies. By virtue of these agreements, a fee is paid for each pupil thus admitted which is equivalent to the actual cost to the school's budget of the education provided.

This category of pupils currently accounts for just over 5% of the total pupil population. Their numbers fell sharply in 2009 in several schools owing to the impact of the economic crisis.

In view of the accommodation constraints, the Board of Governors decided no longer to sign any Category II contracts for the Brussels Schools.

Category II pupils account for 28.58% of the pupil population of the Karlsruhe School and 12.95% of that of Varese, which lost 58 pupils between 2008 and 2011 as a result of the economic crisis. The Luxembourg Schools have also been affected by this crisis.

The enrolment of Category II pupils is obviously attractive for those schools which have sufficient space or need extra numbers to create a vibrant pedagogical environment for their pupils.

In the current economic crisis context, in view in particular of the method in force for calculation of the level of the fee payable for Category II pupils, a marked decline in the number of Category II pupils has been noted, resulting in a fall in the total number of pupils in some schools and hence a rise in the cost per pupil.

The question of the setting of the level of Category II school fees remains a sensitive issue and will be the subject of proposals to the Board of Governors made by the 'School Fees' Working Group.

Table EL 2c: Pupil population from 2008 to 2011, Category III population

Schools	2008		2009		2010		2011		Difference between 2008 and 2011	
	Population	%	Population	%	Population	%	Population	%	Population	%
Alicante	603	58,60%	589	57,75%	569	54,98 %	536	52,19 %	-67	-11,11%
Bergen	463	82,53%	484	82,59%	499	82,07 %	472	81,24 %	9	1,94%
Brussels I	316	10,34%	287	9,22%	249	8,10 %	209	6,67 %	-107	-33,86%
Brussels II	136	4,69%	119	3,93%	104	3,37 %	105	3,30 %	-31	-22,79%
Brussels III	195	7,36%	140	4,98%	129	4,45 %	109	3,73 %	-86	-44,10%
Brussels IV	3	0,69 %	4	0,68%	10	1,24 %	14	1,32 %	11	366,67%
Culham	680	81,44 %	709	84,91%	687	85,13 %	628	84,29 %	-52	-7,65%
Frankfurt	351	33,33 %	317	29,22%	276	25,44 %	249	21,91 %	-102	-29,06%
Karlsruhe	538	54,90 %	524	53,85%	508	53,87 %	496	53,10 %	-42	-7,81%
Luxembourg I	505	14,69 %	490	14,13%	466	13,41 %	464	12,96 %	-41	-8,12%
Luxembourg II	116	13,14 %	137	15,22%	134	14,21 %	132	13,79 %	16	13,79%
Mol	549	76,46 %	591	78,70%	627	79,47 %	614	80,05 %	65	11,84%
Munich	355	20,23 %	352	19,06%	330	17,36 %	332	16,68 %	-23	-6,48%
Varese	393	29,28 %	402	30,83%	393	29,82 %	414	30,30 %	21	5,34%
Total	5.203	24,05 %	5.146	23,06%	4.981	21,87 %	4774	20,43 %	-429	-8,25%

Category III pupils are pupils whose parents are required to pay school fees.

They currently account for 20.43% of the pupils of the European Schools. Category III pupil numbers are down in absolute and relative terms. The fall is particularly marked in Brussels, where a highly restrictive policy is applied on account of the overall overcrowding.

At the Mol School, on the other hand, Category III pupil numbers have risen as a result in particular of the opening of an Anglophone section.

3. Pupil population by nationality and by category

Table EL 2d shows the number of pupils from each of the Member States and the percentage of the total number of pupils from the Member States represented by the pupils from each Member State. These figures are given by category and for the overall situation. It should be noted that for the purposes of this table, pupils who are nationals of countries other than the Member States are disregarded. Consequently, the total population figures do not correspond exactly to the figures in the previous tables where pupils' nationality was not taken into account.

The figures in this report, compiled on 15 October 2011, concern the 27 EU Member States, after the most recent enlargement wave which saw Bulgaria and Romania accede to the EU in 2007.

In addition, there are **869** pupils, i.e. **3.71%** of the total population, who are nationals of non-EU countries.

**Table EL 2d: Pupil population by nationality and by category
Member States of the European Union**

	Category I		Category II		Category III		Total	
	Population	%	Population	%	Population	%	Population	%
German	2285	66,17%	230	24,52 %	938	27,16 %	3453	14,77 %
Austrian	299	90,88%	8	2,43 %	22	6,68 %	329	1,40 %
Belgian	1857	83,91%	43	1,94 %	313	14,14 %	2213	9,47 %
British	1183	64,50%	114	6,28 %	537	29,28 %	1834	7,84 %
Bulgarian	272	93,47%	11	3,78 %	8	2,74 %	291	1,24 %
Cypriot	38	100,00%	0	0,00 %	0	0,00 %	38	0,16 %
Danish	519	76,54%	54	7,96 %	105	15,48 %	678	2,90 %
Spanish	1414	75,85%	42	2,25 %	408	21,88 %	1864	7,97 %
Estonian	191	100,00%	0	0,00 %	0	0,00 %	191	0,81 %
Finnish	644	94,42%	11	1,61 %	27	3,95 %	682	2,91 %
French	2240	77,21%	152	5,23 %	509	17,54 %	2901	12,41 %
Greek	662	84,33%	16	2,03 %	107	13,63 %	785	3,35 %
Hungarian	292	97,00%	3	0,99 %	6	1,99 %	301	1,28 %
Irish	410	85,06%	14	2,90 %	58	12,03 %	482	2,06 %
Italian	1550	68,10%	201	8,83 %	525	23,06 %	2276	9,74 %
Latvian	162	98,18%	0	0,00 %	3	1,81 %	165	0,70 %
Lithuanian	248	97,25%	1	0,39 %	6	2,35 %	255	1,09 %
Luxembourg	179	79,20%	4	1,76 %	43	19,02 %	226	0,96 %
Maltese	75	98,68%	1	1,31 %	0	0,00 %	76	0,32 %
Dutch	485	43,61%	51	4,58 %	576	51,79 %	1112	4,75 %
Polish	353	92,16%	13	3,39 %	17	4,43 %	383	1,63 %
Portuguese	543	91,56%	12	2,02 %	38	6,40 %	593	2,53 %
Romanian	231	91,66%	10	3,96 %	11	4,36 %	252	1,07 %
Slovak	168	95,45%	2	1,13 %	6	3,40 %	176	0,75 %
Slovene	106	100,00%	0	0,00 %	0	0,00 %	106	0,45 %
Swedish	522	85,99%	31	5,10 %	54	8,89 %	607	2,59 %
Czech	208	90,82%	3	1,31 %	18	7,86 %	229	0,98 %
Total	17136	100,00%	1027	100,00%	4335	100,00%	22498	100,00%

■ Catégorie I
 ■ Catégorie II
 ■ Catégorie III

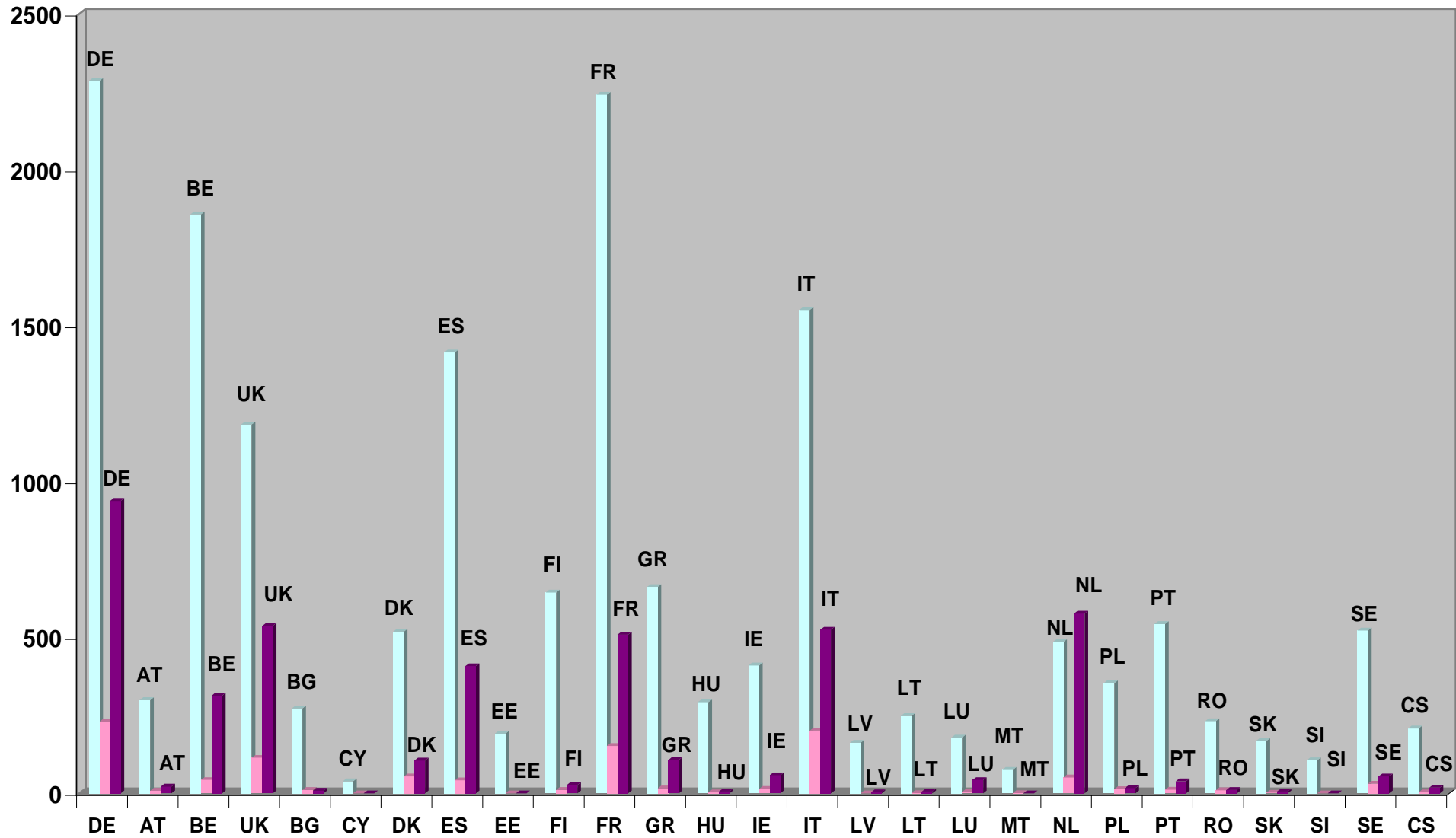
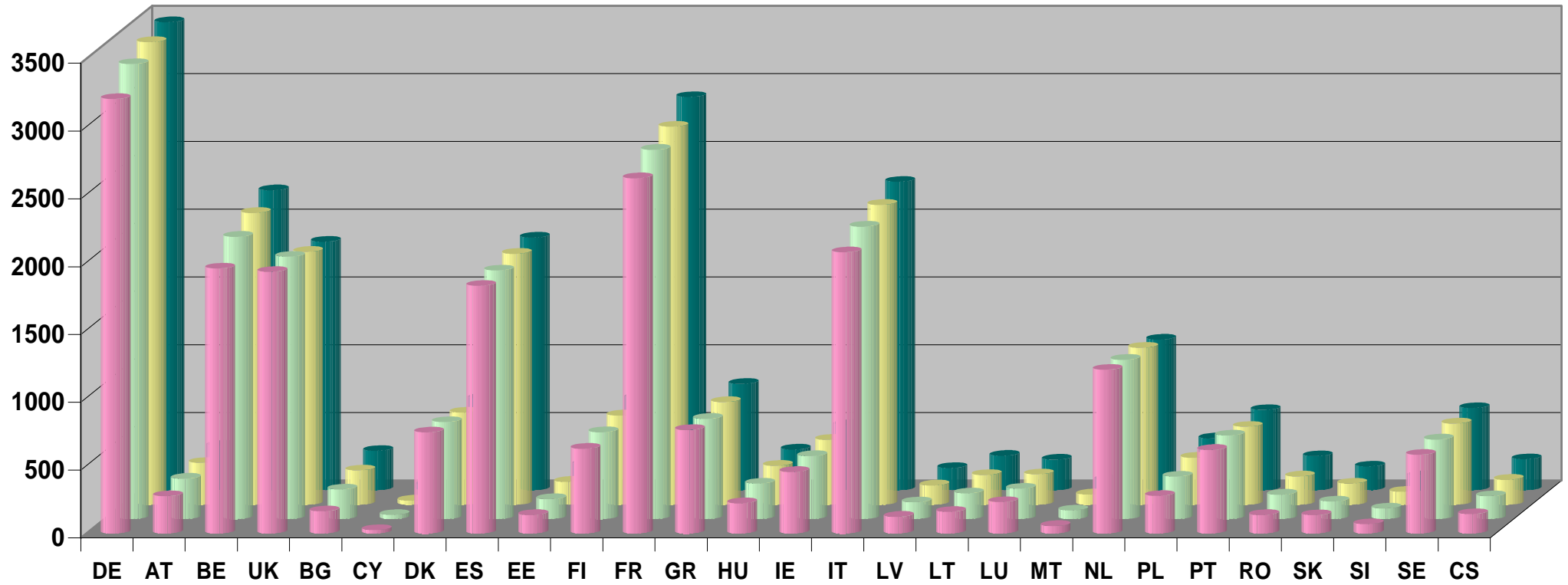


Table EI2d a: Development of the pupil population by nationality according to the Member States

Nationality	2008	2009	2010	2011	Diff. between 2008 and 2011	
					Population	%
German	3205	3357	3412	3453	248	7,74%
Austrian	275	298	309	329	54	19,64%
Belgian	1954	2082	2152	2213	259	13,25%
British	1930	1935	1865	1834	-96	-4,97%
Bulgarian	164	219	253	291	127	77,44%
Cypriot	25	31	31	38	13	52,00%
Danish	745	716	680	678	-67	-8,99%
Spanish	1826	1834	1851	1864	38	2,08%
Estonian	136	147	169	191	55	40,44%
Finnish	625	641	658	682	57	9,12%
French	2620	2724	2788	2901	281	10,73%
Greek	763	739	757	785	22	2,88%
Hungarian	223	262	287	301	78	34,98%
Irish	454	465	479	482	28	6,17%
Italian	2074	2157	2212	2276	202	9,74%
Latvian	123	124	142	165	42	34,15%
Lithuanian	159	190	219	255	96	60,38%
Luxembourg	232	225	224	226	-6	-2,59%
Maltese	55	64	76	76	21	38,18%
Dutch	1207	1175	1158	1112	-95	-7,87%
Polish	277	313	347	383	106	38,27%
Portuguese	616	617	575	593	-23	-3,73%
Romanian	136	180	208	252	116	85,29%
Slovak	135	130	156	176	41	30,37%
Slovene	69	78	96	106	37	53,62%
Swedish	580	587	599	607	27	4,66%
Czech	143	169	184	229	86	60,14%
Total	20751	21459	21887	22498	1747	8,42%



4. Pupil population by teaching level

Table EL 3: Population by teaching level from 2008 to 2011

Schools	Cycle	2008		2009		2010		2011		Diff. 2008 to 2011	
		Population	%	Population	%	Population	%	Population	%	Population	%
Alicante	Nursery	121	0,83%	109	-9,91%	120	10,09%	117	-2,50%	-4	-3,31%
	Primary	363	-3,71%	361	-0,55%	356	-1,39%	361	1,40%	-2	-0,55%
	Secondary	545	4,80%	550	0,91%	559	1,64%	549	-1,79%	4	0,73%
Total Alicante		1029	1,17%	1020	-0,87%	1035	1,47%	1027	-0,77%	-2	-0,19%
Bergen	Nursery	53	-1,85%	64	20,75%	62	-3,13%	54	-12,90%	1	1,89%
	Primary	201	6,34%	209	3,98%	222	6,22%	205	-7,66%	4	1,99%
	Secondary	311	0,00%	313	0,64%	324	3,51%	322	-0,62%	11	3,54%
Total Bergen		565	1,98%	586	3,71%	608	3,75%	581	-4,44%	16	2,83%
Brussels I	Nursery	186	-25,89%	222	19,35%	240	8,11%	266	10,83%	80	43,01%
	Primary	1190	0,76%	1130	-5,04%	1091	-3,45%	1063	-2,57%	-127	-10,67%
	Secondary	1681	4,21%	1760	4,69%	1743	-0,97%	1802	3,38%	121	7,20%
Total Brussels I		3057	0,39%	3112	1,79%	3074	-1,22%	3131	1,85%	74	2,42%
Brussels II	Nursery	215	11,97%	292	35,81%	306	4,79%	295	-3,59%	80	37,21%
	Primary	1006	-2,70%	1058	5,16%	1123	6,14%	1189	5,88%	183	18,19%
	Secondary	1683	0,95%	1680	-0,17%	1660	-1,19%	1692	1,93%	9	0,53%
Total Brussels II		2904	0,38%	3030	4,33%	3089	1,95%	3176	2,82%	272	9,37%
Brussels III	Nursery	166	5,73%	229	37,95%	262	14,41%	261	-0,38%	-17	-57,23%
	Primary	875	-2,45%	922	5,37%	940	1,95%	932	-0,85%	57	6,51%
	Secondary	1608	2,61%	1660	3,23%	1700	2,41%	1726	1,53%	118	7,34%
Total Brussels III		2649	1,06%	2811	6,11%	2902	3,24%	2919	0,59%	270	10,19%
Brussels IV	Nursery	174		170		168	-1,18%	199	18,45%	25	14,37%
	Primary	264		424		570	34,43%	673	18,07%	409	154,92%
	Secondary					71		187			
Total Brussels IV		438		594		809		1059	30,90%	621	
Culham	Nursery	67	-6,94%	65	-2,98%	45	-30,77%	0	-100,00%	-67	-100,00%
	Primary	309	-1,90%	296	-4,20%	279	-5,74%	293	5,02%	-16	-5,18%
	Secondary	459	4,31%	474	3,26%	483	1,90%	452	-6,42%	-7	-1,53%
Total Culham		835	0,96%	835	0,00%	807	-3,35%	745	-7,68%	-90	-10,78%
Frankfurt	Nursery	131	9,16%	130	-0,76%	142	9,23%	149	4,93%	18	13,74%
	Primary	428	3,63%	421	-1,63%	417	-0,95%	444	6,47%	16	3,74%
	Secondary	494	11,01%	534	8,09%	526	-1,50%	543	3,23%	49	9,92%
Total Frankfurt		1053	7,66%	1085	3,03%	1085	0,00%	1136	4,70%	83	7,88%
Karlsruhe	Nursery	75	-2,59%	96	28,00%	106	10,42%	100	-5,66%	25	33,33%
	Primary	327	-6,83%	315	-3,66%	296	-6,03%	312	5,41%	-15	-4,59%
	Secondary	577	0,69%	565	-2,07%	541	-4,25%	522	-3,51%	-55	-9,53%
Total Karlsruhe		979	-2,19%	976	-0,30%	943	-3,38%	934	-0,95%	-45	-4,60%
Luxemb. I	Nursery	298	-2,29%	308	3,35%	339	10,06%	374	10,32%	76	25,50%
	Primary	930	0,75%	945	1,61%	903	-4,44%	930	2,99%	0	0,00%
	Secondary	2209	2,83%	2215	0,27%	2233	0,81%	2275	1,88%	66	2,99%
Total Luxembourg I		3437	1,80%	3468	0,90%	3475	0,20%	3579	2,99%	142	4,13%
Luxemb. II	Nursery	212	-2,30%	215	1,41%	213	-0,93%	247	15,96%	35	16,51%
	Primary	676	-0,58%	695	2,81%	730	5,04%	710	-2,74%	34	5,03%
	Secondary										
Total Luxembourg II		888	-1,00%	910	-7,89%	943	3,63%	957	1,48%	69	7,77%
Mol	Nursery	55	-5,17%	64	16,36%	72	12,50%	73	1,39%	18	32,73%
	Primary	230	23,65%	239	3,91%	249	4,18%	245	-1,61%	15	6,52%
	Secondary	433	4,84%	449	3,69%	468	4,23%	449	-4,06%	16	3,70%
Total Mol		718	9,28%	752	4,59%	789	4,92%	767	-2,79%	49	6,82%
Munich	Nursery	124	6,89%	112	-9,67%	117	4,46%	115	-1,71%	-9	-7,26%
	Primary	747	2,75%	805	7,76%	834	3,60%	876	5,04%	129	17,27%
	Secondary	885	7,53%	931	5,19%	950	2,04%	999	5,16%	114	12,88%
Total Munich		1756	5,40%	1848	5,23%	1901	2,86%	1990	4,68%	234	13,33%
Varese	Nursery	117	-8,59%	112	-4,27%	102	-8,93%	115	12,75%	-2	-1,71%
	Primary	511	8,95%	482	-5,67%	502	4,15%	534	6,37%	23	4,50%
	Secondary	713	-0,97%	710	-0,42%	714	0,56%	717	0,42%	4	0,56%
Total Varese		1341	1,82%	1304	-2,75%	1318	1,07%	1366	3,64%	25	1,86%
Total	Nursery	1993	2,52%	2188	9,78%	2294	4,84%	2365	3,09%	372	18,67%
	Primary	8057	2,80%	8302	3,04%	8512	2,53%	8767	2,99%	710	8,81%
	Secondary	11599	3,19%	11841	3,00%	11972	1,11%	12235	2,19%	636	5,48%
Grand totals		21649	2,98%	22331	3,15%	22778	2,00%	23367	2,58%	1718	7,94%

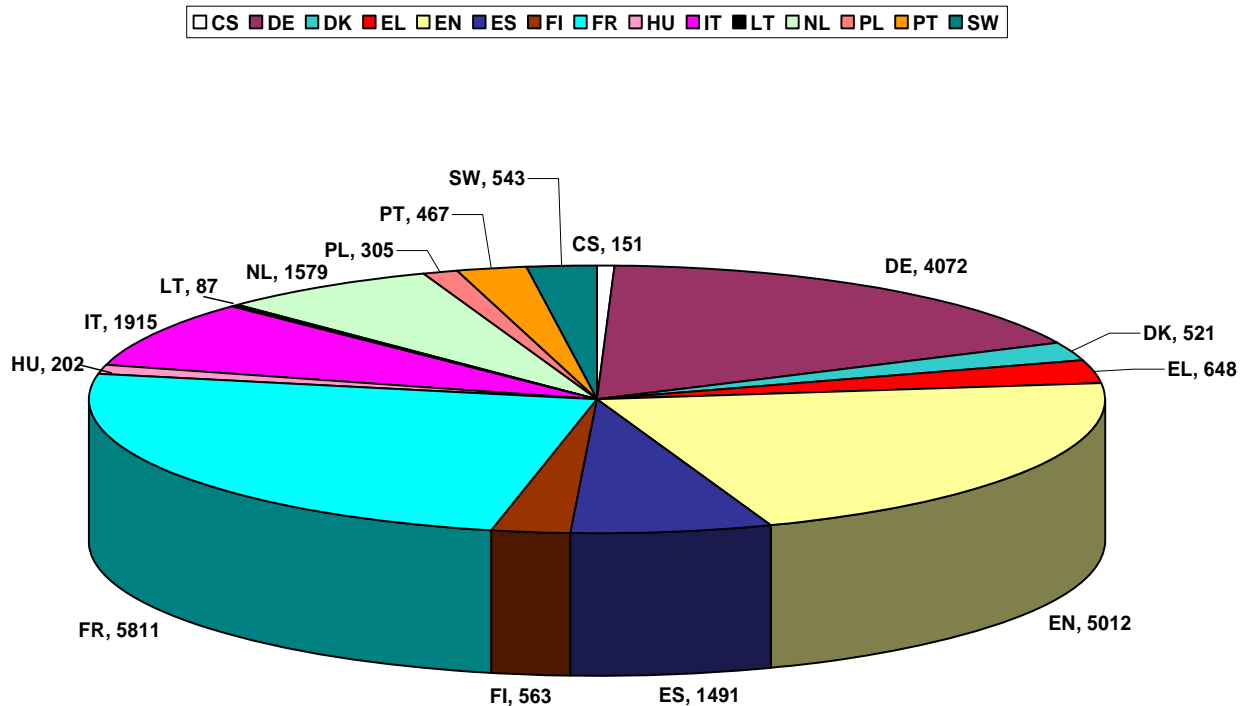
Table EL 3 shows, for each year under review, the number of pupils at each teaching level (Nursery, Primary and Secondary) in each school and in the system as a whole, as well as the percentage variation year on year since 2008. The last two columns show the differences, in absolute and percentage terms, recorded for each teaching level in each school and in the system as a whole for the period since 2008.

5. Pupil population by language section

Table LANG SECT 1 shows the population of each of the language sections in each of the schools for the current school year, while the overall situation for the system as a whole is summarised in the accompanying pie chart.

Table LANG SECT 1: Language sections – 2011-2012 school year

Schools	CS	DE	DK	EL	EN	ES	FI	FR	HU	IT	LT	NL	PL	PT	SW	Total
Alicante		175			270	382		200								1027
Bergen					219			105				257				581
Brussels I		317	270		533	316		1006	160	333			196			3131
Brussels II		319			473		388	727		307	87	248		291	336	3176
Brussels III	110	333		430	513	425		818				290				2919
Brussels IV		154			256			491		104		54				1059
Culham		203			318			224								745
Frankfurt		399			350			204		183						1136
Karlsruhe		404			339			191								934
Luxembourg I		416	153	101	643	299	175	889		162		249	109	176	207	3579
Luxembourg II	41	113	98	72	168			276	42	147						957
Mol		72			264			160				271				767
Munich		937		45	299	69		292		250		98				1990
Varese		230			367			228		429		112				1366
Total	151	4072	521	648	5012	1491	563	5811	202	1915	87	1579	305	467	543	23367



Broadly speaking, pupil numbers in the different language sections reflect the size of the population in question in Europe, but clearly the languages of those countries which are host countries to the schools and the EU institutions are particularly well represented in the schools.

The concentration of the institutions in cities (Brussels and Luxembourg) which are largely Francophone is reflected in the size of the Francophone sections. The Francophone section accounts for almost a third of the total number of pupils on roll at the Brussels I School and for 46% at the Brussels IV School. All the schools have a Francophone section and an Anglophone and a German section, with the exception, in the case of the latter, of Bergen.

The Anglophone sections have the highest percentage of SWALS.

The Lithuanian section set up at Brussels II for the nursery and primary in 2006 now has 87 pupils on roll. The secondary school pupils are generally enrolled in the Anglophone section.

In the case of the smaller language sections, classes (year groups) are grouped together according to pupil numbers, in accordance with the decisions of the Board of Governors.

SWALS tables

SWALS are those Categories I and II pupils whose mother tongue/dominant language is an official language of an EU Member State (with the exception of Irish and Maltese) but for whom no language section in their mother tongue/dominant language (L1) exists in their school.

If one of the language sections of the European Schools corresponding to a Category I or II pupil's mother tongue/dominant language is not open in the school, this pupil is entitled to tuition in his/her L1, working on the assumption that the School has at its disposal a duly qualified teacher, or can recruit one.

SWALS are normally enrolled in one of the working language (DE, EN, FR) sections. The language of the section is the pupil's L2. SWALS can also be enrolled in the language section of the host country on condition that no additional costs are created. Their L2 should be English, French or German.

SWALS are entitled to receive SWALS support when lack of knowledge of the language of the section in which they are enrolled is a barrier to communication, integration and learning. This support focuses on the acquisition of this language and thus facilitates SWALS' access to the curriculum.

From 1 September 2011, Category III pupils will learn as L1 the language of the section in which they are enrolled. Category III pupils who were enrolled before 1 September 2011 and who learnt as L1 a language different from that of the section can continue with the same L1 up to the end of their schooling in order to ensure pedagogical continuity.

The tables below show the number of SWALS in the European Schools, broken down by language section, nationality, cycle (teaching level) and nationality. However, the number of Category 3 pupils does not appear in these tables.

Alicante

Language section	DE							EN						ES				FR					IT					NL			GRAND TOTAL			
	Nurs	Nurs	Prim	Prim	Sec	Sec	TOTAL:	Nurs	Nurs	Prim	Prim	Sec	Sec	TOTAL:	Nurs	Prim	Sec	TOTAL:	Nurs	Prim	Prim	Sec	Sec	TOTAL:	Nurs	Prim	Sec	TOTAL:	Nurs	Prim		Sec	TOTAL:	
Nationality	Cat.1	Cat.2	Cat.1	Cat.2	Cat.1	Cat.2		Cat.1	Cat.2	Cat.1	Cat.2	Cat.1	Cat.2		Cat.1	Cat.1	Cat.1		Cat.1	Cat.1	Cat.2	Cat.1	Cat.2		Cat.1	Cat.2	Cat.1	Cat.2	Cat.1		Cat.1	Cat.1	Cat.1	
EE	0	0	0	0	0	0	0	0	0	1	0	1	0	2	0	0	0	0	0	0	0	0	0	0	0	0	0	0	0	0	0	0	0	0
FI	0	0	0	0	0	0	0	1	0	1	0	1	0	3	1	3	0	4	0	0	0	0	0	0	0	0	0	0	0	0	0	0	0	0
HU	0	0	0	0	0	0	0	1	0	1	0	2	0	4	0	3	0	3	0	0	0	0	0	0	0	0	0	0	0	0	0	0	0	0
IT	0	0	0	0	0	0	0	2	0	1	0	0	0	3	1	7	8	16	0	1	0	0	0	0	1	0	0	0	0	0	0	0	0	0
LT	0	0	0	0	0	0	0	0	0	3	0	0	0	3	0	0	0	0	0	0	0	0	0	0	0	0	0	0	0	0	0	0	0	0
NL	0	0	0	0	0	0	0	0	0	0	0	4	1	5	1	13	7	21	0	0	0	0	0	0	0	0	0	0	0	0	0	0	0	0
PL	0	0	0	0	0	0	0	0	0	1	0	0	0	1	1	1	0	2	0	0	0	0	0	0	0	0	0	0	0	0	0	0	0	0
PT	0	0	0	0	0	0	0	1	0	2	0	0	0	3	0	2	0	2	0	2	0	1	0	3	0	0	0	0	0	0	0	0	0	0
SK	0	0	0	0	1	0	1	1	0	1	0	1	0	3	0	0	0	0	0	0	0	0	0	0	0	0	0	0	0	0	0	0	0	0
SE	0	0	0	0	0	0	0	1	0	0	0	0	0	1	0	4	0	4	0	0	0	0	0	0	0	0	0	0	0	0	0	0	0	0
TOTAL:	0	0	0	0	1	0	1	7	0	11	0	9	1	28	4	33	15	52	0	3	0	1	0	4	0	0	0	0	0	0	0	0	0	0

Bergen

Language section	DE							EN						ES				FR					IT					NL			GRAND TOTAL			
	Nurs	Nurs	Prim	Prim	Sec	Sec	TOTAL:	Nurs	Nurs	Prim	Prim	Sec	Sec	TOTAL:	Nurs	Prim	Sec	TOTAL:	Nurs	Prim	Prim	Sec	Sec	TOTAL:	Nurs	Prim	Sec	TOTAL:	Nurs	Prim		Sec	TOTAL:	
Nationality	Cat.1	Cat.2	Cat.1	Cat.2	Cat.1	Cat.2		Cat.1	Cat.2	Cat.1	Cat.2	Cat.1	Cat.2		Cat.1	Cat.1	Cat.1		Cat.1	Cat.1	Cat.2	Cat.1	Cat.2		Cat.1	Cat.2	Cat.1	Cat.2	Cat.1		Cat.1	Cat.1	Cat.1	
BG	0	0	0	0	0	0	0	1	0	0	0	1	0	2	0	0	0	0	0	0	0	0	0	0	0	0	0	0	0	0	0	0	0	0
CS	0	0	0	0	0	0	0	0	0	0	0	2	0	2	0	0	0	0	0	0	0	0	0	0	0	0	0	0	0	0	0	0	0	0
DE	0	0	0	0	0	0	0	2	0	5	0	4	0	11	0	0	0	0	0	0	0	0	0	0	0	0	0	0	0	0	0	0	0	0
DK	0	0	0	0	0	0	0	0	0	0	0	0	0	0	0	0	0	0	0	0	0	0	0	0	0	0	0	0	0	0	0	1	1	0
ES	0	0	0	0	0	0	0	0	0	4	0	5	0	9	0	0	0	0	0	0	0	0	0	0	0	0	0	0	0	0	0	0	0	0
FI	0	0	0	0	0	0	0	0	0	1	0	0	0	1	0	0	0	0	0	0	0	0	0	0	0	0	0	0	0	0	0	0	0	0
HU	0	0	0	0	0	0	0	1	0	0	0	0	0	1	0	0	0	0	0	0	0	0	0	0	0	0	0	0	0	0	0	0	0	0
IT	0	0	0	0	0	0	0	3	0	3	0	0	0	6	0	0	0	0	0	0	0	0	0	0	0	0	0	0	0	0	0	0	0	0
LT	0	0	0	0	0	0	0	1	0	1	0	0	0	2	0	0	0	0	0	0	0	0	0	0	0	0	0	0	0	0	0	0	0	0
PL	0	0	0	0	0	0	0	0	0	1	0	1	0	2	0	0	0	0	0	0	0	0	0	0	0	0	0	0	0	0	0	0	0	0
PT	0	0	0	0	0	0	0	0	0	0	0	1	0	1	0	0	0	0	0	0	0	0	0	0	0	0	0	0	0	0	0	0	1	1
SK	0	0	0	0	0	0	0	0	0	0	0	1	0	1	0	0	0	0	0	0	0	0	0	0	0	0	0	0	0	0	0	0	0	0
SI	0	0	0	0	0	0	0	0	0	1	0	0	0	1	0	0	0	0	0	0	0	0	0	0	0	0	0	0	0	0	0	0	0	0
SE	0	0	0	0	0	0	0	2	0	0	0	1	0	3	0	0	0	0	0	0	0	0	1	0	1	0	0	0	0	0	0	0	0	0
TOTAL:	0	0	0	0	0	0	0	10	0	16	0	16	0	42	0	0	0	0	0	0	0	1	0	1	0	0	0	0	0	0	0	1	2	1

Brussels I

Language section	DE							EN							ES				FR						IT						NL				GRAND TOTAL		
	Nurs	Nurs	Prim	Prim	Sec	Sec	TOTAL:	Nurs	Nurs	Prim	Prim	Sec	Sec	TOTAL:	Nurs	Prim	Sec	TOTAL:	Nurs	Prim	Prim	Sec	Sec	TOTAL:	Nurs	Nurs	Prim	Prim	Sec	TOTAL:	Nurs	Prim	Sec	TOTAL:			
Nationality	Cat.1	Cat.2	Cat.1	Cat.2	Cat.1	Cat.2	TOTAL:	Cat.1	Cat.2	Cat.1	Cat.2	Cat.1	Cat.2	TOTAL:	Cat.1	Cat.1	Cat.1	TOTAL:	Cat.1	Cat.1	Cat.2	Cat.1	Cat.2	TOTAL:	Cat.1	Cat.2	Cat.1	Cat.2	Cat.1	TOTAL:	Cat.1	Cat.1	Cat.1	TOTAL:			
BG	0	0	1	0	2	0	3	0	0	9	1	26	1	37	0	0	0	0	0	3	0	7	0	10	0	0	0	0	0	0	0	0	0	0	0	0	50
RO	0	0	0	0	0	0	0	0	0	1	0	25	0	26	0	0	0	0	0	1	0	4	0	5	0	0	0	0	0	0	0	0	0	0	0	0	31
SI	1	0	1	0	0	0	2	10	0	11	0	20	0	41	0	0	0	0	3	8	0	3	0	14	0	0	0	0	0	0	0	0	0	0	0	0	57
TOTAL:	1	0	2	0	2	0	5	10	0	21	1	71	1	104	0	0	0	0	3	12	0	14	0	29	0	0	0	0	0	0	0	0	0	0	0	0	138

Brussels II

Language section	DE							EN							ES				FR						IT						NL				GRAND TOTAL		
	Nurs	Nurs	Prim	Prim	Sec	Sec	TOTAL:	Nurs	Nurs	Prim	Prim	Sec	Sec	TOTAL:	Nurs	Prim	Sec	TOTAL:	Nurs	Prim	Prim	Sec	Sec	TOTAL:	Nurs	Nurs	Prim	Prim	Sec	TOTAL:	Nurs	Prim	Sec	TOTAL:			
Nationality	Cat.1	Cat.2	Cat.1	Cat.2	Cat.1	Cat.2	TOTAL:	Cat.1	Cat.2	Cat.1	Cat.2	Cat.1	Cat.2	TOTAL:	Cat.1	Cat.1	Cat.1	TOTAL:	Cat.1	Cat.1	Cat.2	Cat.1	Cat.2	TOTAL:	Cat.1	Cat.2	Cat.1	Cat.2	Cat.1	TOTAL:	Cat.1	Cat.1	Cat.1	TOTAL:			
EE	3	0	1	0	0	0	4	12	0	29	0	23	0	64	0	0	0	0	15	18	0	6	0	39	0	0	0	0	0	0	0	0	0	0	0	0	107
LV	0	0	0	0	0	0	0	6	0	18	0	31	0	55	0	0	0	0	10	13	0	4	0	27	0	0	0	0	0	0	0	0	0	0	0	0	82
LT	0	0	0	0	0	0	0	0	0	0	0	45	0	45	0	0	0	0	0	0	0	7	0	7	0	0	0	0	0	0	0	0	0	0	0	0	52
TOTAL:	3	0	1	0	0	0	4	18	0	47	0	99	0	164	0	0	0	0	25	31	0	17	0	73	0	0	0	0	0	0	0	0	0	0	0	0	241

Brussels III

Language section	DE							EN							ES				FR						IT						NL				GRAND TOTAL		
	Nurs	Nurs	Prim	Prim	Sec	Sec	TOTAL:	Nurs	Nurs	Prim	Prim	Sec	Sec	TOTAL:	Nurs	Prim	Sec	TOTAL:	Nurs	Prim	Prim	Sec	Sec	TOTAL:	Nurs	Nurs	Prim	Prim	Sec	TOTAL:	Nurs	Prim	Sec	TOTAL:			
Nationality	Cat.1	Cat.2	Cat.1	Cat.2	Cat.1	Cat.2	TOTAL:	Cat.1	Cat.2	Cat.1	Cat.2	Cat.1	Cat.2	TOTAL:	Cat.1	Cat.1	Cat.1	TOTAL:	Cat.1	Cat.1	Cat.2	Cat.1	Cat.2	TOTAL:	Cat.1	Cat.2	Cat.1	Cat.2	Cat.1	TOTAL:	Cat.1	Cat.1	Cat.1	TOTAL:			
CS	0	0	0	0	2	0	2	0	0	0	0	18	0	18	0	0	0	0	0	0	0	7	0	7	0	0	0	0	0	0	0	0	0	0	0	0	27
SK	1	0	3	0	2	0	6	5	0	19	0	23	0	47	0	0	0	0	11	17	0	5	0	33	0	0	0	0	0	0	0	0	0	0	0	0	86
TOTAL:	1	0	3	0	4	0	8	5	0	19	0	41	0	65	0	0	0	0	11	17	0	12	0	40	0	0	0	0	0	0	0	0	0	0	0	0	113

Brussels IV

Language section	DE							EN							ES				FR						IT						NL				GRAND TOTAL		
	Nurs	Nurs	Prim	Prim	Sec	Sec	TOTAL:	Nurs	Nurs	Prim	Prim	Sec	Sec	TOTAL:	Nurs	Prim	Sec	TOTAL:	Nurs	Prim	Prim	Sec	Sec	TOTAL:	Nurs	Nurs	Prim	Prim	Sec	TOTAL:	Nurs	Prim	Sec	TOTAL:			
Nationality	Cat.1	Cat.2	Cat.1	Cat.2	Cat.1	Cat.2	TOTAL:	Cat.1	Cat.2	Cat.1	Cat.2	Cat.1	Cat.2	TOTAL:	Cat.1	Cat.1	Cat.1	TOTAL:	Cat.1	Cat.1	Cat.2	Cat.1	Cat.2	TOTAL:	Cat.1	Cat.2	Cat.1	Cat.2	Cat.1	TOTAL:	Cat.1	Cat.1	Cat.1	TOTAL:			
BG	1	0	5	0	0	0	6	1	0	32	0	14	0	47	0	0	0	0	9	19	1	3	0	32	0	0	0	0	0	0	0	0	0	0	0	0	85
RO	1	0	2	0	1	0	4	6	0	26	0	9	1	42	0	0	0	0	14	26	1	2	0	43	0	0	0	0	0	0	0	0	0	0	0	0	89
TOTAL:	2	0	7	0	1	0	10	7	0	58	0	23	1	89	0	0	0	0	23	45	2	5	0	75	0	0	0	0	0	0	0	0	0	0	0	0	174

Culham																																		
Language section	DE							EN							ES					FR					IT					NL				GRAND TOTAL
Nurs	Nurs	Prim	Prim	Sec	Sec	TOTAL:	Nurs	Nurs	Prim	Prim	Sec	Sec	TOTAL:	Nurs	Prim	Sec	TOTAL:	Nurs	Prim	Prim	Sec	Sec	TOTAL:	Nurs	Nurs	Prim	Prim	Sec	TOTAL:	Nurs	Prim	Sec	TOTAL:	
Nationality	Cat.1	Cat.2	Cat.1	Cat.2	Cat.1	Cat.2	TOTAL:	Cat.1	Cat.2	Cat.1	Cat.2	Cat.1	Cat.2	TOTAL:	Cat.1	Cat.1	Cat.1	TOTAL:	Cat.1	Cat.1	Cat.2	Cat.1	Cat.2	TOTAL:	Cat.1	Cat.2	Cat.1	Cat.2	Cat.1	TOTAL:	Cat.1	Cat.1	Cat.1	TOTAL:
DK	0	0	0	0	0	0	0	0	0	1	0	2	0	3	0	0	0	0	0	0	0	0	0	0	0	0	0	0	0	0	0	0	3	
ES	0	0	0	0	0	0	0	0	0	0	1	0	4	5	0	0	0	0	0	0	0	0	0	0	0	0	0	0	0	0	0	0	5	
NL	0	0	0	0	0	0	0	0	0	0	0	1	0	1	0	0	0	0	0	0	0	0	0	0	0	0	0	0	0	0	0	0	1	
PT	0	0	0	0	0	0	0	0	0	2	0	0	0	2	0	0	0	0	0	0	0	0	0	0	0	0	0	0	0	0	0	0	2	
TOTAL:	0	0	0	0	0	0	0	0	0	3	1	3	4	11	0	0	0	0	0	0	0	0	0	0	0	0	0	0	0	0	0	11		

Frankfurt																																		
Language section	DE							EN							ES					FR					IT					NL				GRAND TOTAL
Nurs	Nurs	Prim	Prim	Sec	Sec	TOTAL:	Nurs	Nurs	Prim	Prim	Sec	Sec	TOTAL:	Nurs	Prim	Sec	TOTAL:	Nurs	Prim	Prim	Sec	Sec	TOTAL:	Nurs	Nurs	Prim	Prim	Sec	TOTAL:	Nurs	Prim	Sec	TOTAL:	
Nationality	Cat.1	Cat.2	Cat.1	Cat.2	Cat.1	Cat.2	TOTAL:	Cat.1	Cat.2	Cat.1	Cat.2	Cat.1	Cat.2	TOTAL:	Cat.1	Cat.1	Cat.1	TOTAL:	Cat.1	Cat.1	Cat.2	Cat.1	Cat.2	TOTAL:	Cat.1	Cat.2	Cat.1	Cat.2	Cat.1	TOTAL:	Cat.1	Cat.1	Cat.1	TOTAL:
BG	2	0	1	0	0	0	3	2	0	1	0	0	0	3	0	0	0	0	0	0	0	0	0	0	0	0	0	0	0	0	0	6		
CS	0	0	0	1	0	0	1	2	0	1	0	0	0	3	0	0	0	0	0	0	0	0	0	0	0	0	0	0	0	0	0	4		
DK	1	0	3	0	0	0	4	1	0	0	0	1	0	2	0	0	0	0	0	0	0	0	0	0	0	0	0	0	0	0	0	6		
GR	4	0	3	0	0	0	7	3	0	4	0	2	0	9	0	0	0	0	0	0	0	0	0	0	0	0	0	0	0	0	0	16		
ES	7	0	11	0	2	0	20	9	0	17	0	11	3	40	0	0	0	0	0	0	0	0	0	0	0	0	0	0	0	0	60			
FI	2	0	1	0	3	0	6	1	0	2	0	7	0	10	0	0	0	0	0	1	1	0	0	0	0	0	0	0	0	0	0	18		
HU	1	0	3	0	0	0	4	0	0	0	1	0	1	2	0	0	0	0	0	0	0	0	0	0	0	0	0	0	0	0	0	6		
LT	2	0	2	0	0	0	4	0	0	0	0	0	0	0	0	0	0	0	0	0	0	0	0	0	0	0	0	0	0	0	4			
NL	2	0	3	0	1	0	6	3	0	11	0	13	0	27	0	0	0	0	0	0	0	0	1	1	0	0	0	0	0	0	34			
PL	0	0	0	0	0	0	0	3	0	5	0	2	0	10	0	0	0	0	0	1	0	0	0	0	0	0	0	0	0	0	0	11		
PT	1	0	7	0	0	0	8	1	0	3	0	4	0	8	0	0	0	0	0	1	0	0	0	0	0	0	0	0	0	0	0	17		
SK	0	0	0	0	0	0	0	1	0	2	0	2	0	5	0	0	0	0	0	0	0	0	0	0	0	0	0	0	0	0	0	5		
SI	2	0	1	0	0	0	3	0	0	1	0	0	0	1	0	0	0	0	0	0	0	0	0	0	0	0	0	0	0	0	4			
SE	2	0	9	0	0	0	11	1	0	1	0	2	0	4	0	0	0	0	0	1	0	0	0	0	0	0	0	0	0	0	0	16		
TOTAL:	26	0	44	1	6	0	77	27	0	48	1	44	4	124	0	0	0	0	2	3	0	0	1	6	0	0	0	0	0	0	207			

Karlsruhe																																		
Language section	DE							EN							ES					FR					IT					NL				GRAND TOTAL
Nurs	Nurs	Prim	Prim	Sec	Sec	TOTAL:	Nurs	Nurs	Prim	Prim	Sec	Sec	TOTAL:	Nurs	Prim	Sec	TOTAL:	Nurs	Prim	Prim	Sec	Sec	TOTAL:	Nurs	Nurs	Prim	Prim	Sec	TOTAL:	Nurs	Prim	Sec	TOTAL:	
Nationality	Cat.1	Cat.2	Cat.1	Cat.2	Cat.1	Cat.2	TOTAL:	Cat.1	Cat.2	Cat.1	Cat.2	Cat.1	Cat.2	TOTAL:	Cat.1	Cat.1	Cat.1	TOTAL:	Cat.1	Cat.1	Cat.2	Cat.1	Cat.2	TOTAL:	Cat.1	Cat.2	Cat.1	Cat.2	Cat.1	TOTAL:	Cat.1	Cat.1	Cat.1	TOTAL:
BG	0	0	0	1	0	0	1	0	0	0	0	0	0	0	0	0	0	0	0	0	0	0	0	0	0	0	0	0	0	0	1			
CS	1	0	3	0	0	0	4	0	0	0	0	0	0	0	0	0	0	0	0	0	0	0	0	0	0	0	0	0	0	0	4			
DK	0	0	0	0	0	0	0	0	0	1	1	3	1	6	0	0	0	0	0	0	0	0	0	0	0	0	0	0	0	0	0	6		
ES	1	0	4	0	0	2	7	0	1	0	0	2	1	4	0	0	0	0	0	0	0	0	0	0	0	0	0	0	0	0	0	11		
FI	1	0	1	0	0	0	2	0	0	0	0	0	0	0	0	0	0	0	0	0	0	0	0	0	0	0	0	0	0	0	2			
HU	0	0	0	0	0	0	0	3	0	0	0	0	0	3	0	0	0	0	0	0	0	0	0	0	0	0	0	0	0	0	3			
IT	0	0	0	0	0	1	1	0	0	0	2	0	2	4	0	0	0	0	0	0	0	0	1	1	0	0	0	0	0	0	6			
LV	1	0	0	0	0	0	1	0	0	0	0	0	0	0	0	0	0	0	0	0	0	0	0	0	0	0	0	0	0	0	1			
NL	0	0	0	0	0	0	0	1	0	0	2	4	5	12	0	0	0	0	0	0	0	0	0	0	0	0	0	0	0	0	0	12		
PL	2	0	1	0	2	0	5	0	0	0	0	1	1	2	0	0	0	0	0	0	0	0	0	0	0	0	0	0	0	0	7			
PT	0	1	0	1	1	3	6	0	0	0	0	0	1	1	0	0	0	0	0	0	0	0	0	0	0	0	0	0	0	0	7			
SE	0	0	0	0	0	0	0	0	0	0	1	2	2	5	0	0	0	0	0	0	0	0	0	0	0	0	0	0	0	0	5			
TOTAL:	6	1	9	2	3	6	27	4	1	1	6	12	13	37	0	0	0	0	0	0	0	0	1	1	0	0	0	0	0	65				

Luxembourg I

Language section	DE							EN							ES				FR					IT					NL				GRAND TOTAL		
	Nurs	Nurs	Prim	Prim	Sec	Sec	TOTAL:	Nurs	Nurs	Prim	Prim	Sec	Sec	TOTAL:	Nurs	Prim	Sec	TOTAL:	Nurs	Prim	Prim	Sec	Sec	TOTAL:	Nurs	Nurs	Prim	Prim	Sec	TOTAL:	Nurs	Prim		Sec	TOTAL:
Nationality	Cat.1	Cat.2	Cat.1	Cat.2	Cat.1	Cat.2		Cat.1	Cat.2	Cat.1	Cat.2	Cat.1	Cat.2		Cat.1	Cat.1	Cat.1		Cat.1	Cat.1	Cat.2	Cat.1	Cat.2		Cat.1	Cat.2	Cat.1	Cat.2	Cat.1		Cat.1	Cat.1		Cat.1	
BG	2	0	2	0	1	0	5	2	0	11	0	12	0	25	0	0	0	0	13	25	0	4	0	42	0	0	0	0	0	0	0	0	0	0	72
CS	0	0	0	0	2	0	2	0	0	0	0	13	1	14	0	0	0	0	0	0	0	3	0	3	0	0	0	0	0	0	0	0	0	0	19
EE	2	0	1	0	0	0	3	7	0	14	0	19	0	40	0	0	0	0	8	12	0	5	0	25	0	0	0	0	0	0	0	0	0	68	
HU	0	0	0	0	4	0	4	0	0	0	0	12	0	12	0	0	0	0	0	0	0	3	0	3	0	0	0	0	0	0	0	0	0	19	
LV	0	0	1	0	0	0	1	1	0	8	0	24	0	33	0	0	0	0	10	8	0	3	0	21	0	0	0	0	0	0	0	0	0	55	
LT	1	0	0	0	0	0	1	6	0	7	0	25	0	38	0	0	0	0	12	26	0	10	0	48	0	0	0	0	0	0	0	0	0	87	
PL	0	0	0	0	0	0	0	0	0	0	3	1	4	0	0	0	0	0	0	0	0	0	0	0	0	0	0	0	0	0	0	0	0	4	
RO	0	0	0	0	1	0	1	0	0	0	0	0	1	1	0	0	0	0	0	0	0	4	0	4	0	0	0	0	0	0	0	0	0	6	
SK	0	0	0	0	0	0	0	0	0	0	0	13	0	13	0	0	0	0	0	0	0	2	0	2	0	0	0	0	0	0	0	0	0	15	
SI	0	0	0	0	0	0	0	0	0	0	0	4	0	4	0	0	0	0	0	0	0	0	0	0	0	0	0	0	0	0	0	0	0	4	
TOTAL:	5	0	4	0	8	0	17	16	0	40	0	125	3	184	0	0	0	0	43	71	0	34	0	148	0	0	0	0	0	0	0	0	349		

Luxembourg II

Language section	DE							EN							ES				FR					IT					NL				GRAND TOTAL		
	Nurs	Nurs	Prim	Prim	Sec	Sec	TOTAL:	Nurs	Nurs	Prim	Prim	Sec	Sec	TOTAL:	Nurs	Prim	Sec	TOTAL:	Nurs	Prim	Prim	Sec	Sec	TOTAL:	Nurs	Nurs	Prim	Prim	Sec	TOTAL:	Nurs	Prim		Sec	TOTAL:
Nationality	Cat.1	Cat.2	Cat.1	Cat.2	Cat.1	Cat.2		Cat.1	Cat.2	Cat.1	Cat.2	Cat.1	Cat.2		Cat.1	Cat.1	Cat.1		Cat.1	Cat.1	Cat.2	Cat.1	Cat.2		Cat.1	Cat.2	Cat.1	Cat.2	Cat.1		Cat.1	Cat.1		Cat.1	
RO	0	0	6	0	0	0	6	1	0	6	1	0	0	8	0	0	0	0	5	10	0	0	0	15	0	0	0	0	0	0	0	0	0	29	
SK	4	0	1	0	0	0	5	6	0	6	0	0	0	12	0	0	0	0	6	4	0	0	0	10	0	0	0	0	0	0	0	0	0	27	
SI	0	0	0	0	0	0	0	5	0	5	0	0	0	10	0	0	0	0	7	8	0	0	0	15	0	0	0	0	0	0	0	0	0	25	
TOTAL:	4	0	7	0	0	0	11	12	0	17	1	0	0	30	0	0	0	0	18	22	0	0	0	40	0	0	0	0	0	0	0	0	81		

Pupil population by language section, category and cycle (teaching level) for the 2011-2012 school year

This table shows the population of each language section in each school, broken down into categories of pupils and teaching level – Nursery, Primary and Secondary.

Schools	Language section Cycle Category	cs			de			dk			el			en			es			fi			fr			hu			it			lt			nl			pl			pt			sw			Total:
		1	2	3	1	2	3	1	2	3	1	2	3	1	2	3	1	2	3	1	2	3	1	2	3	1	2	3	1	2	3	1	2	3	1	2	3	1	2	3	1	2	3				
Alicante	nursery				10		11							15		6	14		33				25		3																			117			
	primary				35		34							40	2	53	87		41				46		23																			361			
	secondary				30		55							48	1	105	90		117				48		55																			549			
Alicante	Total:				75		100							103	3	164	191		191				119		81																			1.027			
Bergen	nursery													11		12							4		6							4		17										54			
	primary													18		57							8		27							12		83										205			
	secondary													23		98							9		51							20		121										322			
Bergen	Total:													52		167							21		84				36		221													581			
Culham	primary				11	3	66							12	1	101							14	3	82																			293			
	secondary				14	8	101							26	4	174							15	6	104																			452			
Culham	Total:				25	11	167							38	5	275							29	9	186																			745			
Brussels I	nursery				24		1	35						27			25						79		28				23	1	1				22									266			
	primary				108	2	10	103	4					163	4	7	119		1				291	3	4	56			87	7	3				90	1								1.063			
	secondary				140	3	29	118	10					288	7	37	154	5	12				570	10	49	75	1		162	9	40				82	1								1.802			
Brussels I	Total:				272	5	40	256	14					478	11	44	298	5	13				940	13	53	159	1		272	17	44				194	1	1							3.131			
Brussels II	nursery				23									35		1			36				51						24		26	17		1			29			52				295			
	primary				115	1	2							113	10	4			167	2			220	8	7				103	3	8	61	79	6	4		103	3	3	164	2	1	1.189				
	secondary				169	5	4							277	22	11			182	1			395	30	16				154	4	11		115	4	22		143	3	7	112	3	2	1.692				
Brussels II	Total:				307	6	6							425	32	16			385	2	1		666	38	23				281	7	19	87	211	10	27		275	6	10	328	5	3	3.176				
Brussels III	nursery	30			26						43			51		1	40						47									22		1										261			
	primary	68	3		114		1				128	2	3	111	3	8	139		2				261	5	4							74	2	4										932			
	secondary	9			184	2	6				241	5	8	297	12	30	239	1	4				475	15	11							161	3	23										1.726			
Brussels III	Total:	107	3		324	2	7				412	7	11	459	15	39	418	1	6				783	20	15							257	5	28										2.919			
Brussels IV	nursery				30									41		1							99						13			14		1										199			
	primary				102	3								153	1	2							297	4	5				69	1	3	32		1										673			
	secondary				19									55	2	1							84	2					18			6												187			
Brussels IV	Total:				151	3								249	3	4							480	6	5				100	1	3	52		2										1.059			
Frankfurt	nursery				68	1								48	2								15	1	4				4	2	4													149			
	primary				151	7	8							127	1	5							48	13	13				26	15	30													444			
	secondary				101	15	48							117	13	37							48	22	40				27	15	60													543			
Frankfurt	Total:				320	23	56							292	16	42							111	36	57				57	32	94													1.136			

Schools	Language section	cs			de			dk			el			en			es			fi			fr			hu			it			lt			nl			pl			pt			sw			Total:
		1	2	3	1	2	3	1	2	3	1	2	3	1	2	3	1	2	3	1	2	3	1	2	3	1	2	3	1	2	3	1	2	3	1	2	3	1	2	3							
Karlsruhe	nursery				19	3	22							9	7	14				5	6	15																						100			
	primary				38	50	42							12	56	40				7	8	59																						312			
	secondary				44	47	139							27	79	95				10	11	70																						522			
Karlsruhe	Total:				101	100	203							48	142	149				22	25	144																						934			
Luxembourg 1	nursery				42		4							53	1		40	6	24	1	113		2						14	7	4	24	2	10	2	1	19	3	2		374						
	primary				92	1	9							125	1	9	86	3	18	63	2	5	240	3	6				47	9	23	47	5	48	5	7	54	14	8		930						
	secondary				200	12	56	84	32	37	91	1	9	372	16	66	123	8	15	73	2	5	471	19	35			112	13	37		76	17	52	29	2	79	6	18	83	4	20	2.275				
Luxembourg 1	Total:				334	13	69	84	32	37	91	1	9	550	18	75	249	11	39	160	4	11	824	22	43			112	13	37		137	33	79	100	9	137	13	26	156	21	30	3.579				
Luxembourg II	nursery	18			17	4	2	10	2	4	26		3	36	1	4					67	1	5	22	1	22		2											247								
	primary	16	1	6	62	6	22	49	11	22	33	2	8	94	9	24					178	13	12	18	1	88	19	16											710								
Luxembourg II	Total:	34	1	6	79	10	24	59	13	26	59	2	11	130	10	28					245	14	17	40	2	110	19	18											957								
Mol	nursery				5		7							7	1	18					1		15						9		10								73								
	primary				6	2	11							10	1	80					6	1	42						15	1	70								245								
	secondary				10		31							25	4	118					15	2	78						29	3	134								449								
Mol	Total:				21	2	49							42	6	216					22	3	135						53	4	214								767								
Munich	nursery				70	1								20	2						21	1																115									
	primary				354	10	5			12	33		80	6	15	55	4	10		127	6	2			59	25	33	16	1	23								876									
	secondary				392	17	88						131	16	29					121	4	10			42	37	54	27	1	30								999									
Munich	Total:				816	28	93			12	33		231	24	44	55	4	10		269	11	12			101	62	87	43	2	53								1.990									
Varese	nursery				11	1	4							29	11	5					9	1	6			16	4	6	5	2	5								115								
	primary				44	12	37							77	31	28					51	6	31			104	21	45	23	6	18								534								
	secondary				54	9	58							97	47	42					78	6	40			154	18	61	23	2	28								717								
Varese	Total:				109	22	99							203	89	75					138	13	77			274	43	112	51	10	51								1.366								
GRAND TOTALS		cs			de			dk			el			en			es			fi			fr			hu			it			lt			nl			pl			pt			sw			
		1	2	3	1	2	3	1	2	3	1	2	3	1	2	3	1	2	3	1	2	3	1	2	3	1	2	3	1	2	3	1	2	3	1	2	3	1	2	3	1	2	3	1	2	3	
nursery		48			345	10	51	45	2	4	69		3	382	25	62	119		39	60	1	536	10	56	50	1	102	7	13	26	85	9	39	46	2	39	2	1	71	3	2	2.365					
primary		84	1	9	1.232	97	247	152	11	26	173	4	44	1.135	126	433	486	7	72	230	4	5	1.794	73	317	74	1	536	91	138	61	298	25	226	137	1	5	151	8	10	218	16	9	8.767			
secondary		9			1.357	118	615	202	32	47	332	6	17	1.783	223	843	606	14	148	255	2	6	2.339	127	559	75	1	669	96	263		457	30	410	111	3	222	9	25	195	7	22	12.235				
Total:		141	1	9	2.934	225	913	399	45	77	574	10	64	3.300	374	1.338	1.211	21	259	545	6	12	4.669	210	932	199	1	1.307	194	414	87	840	64	675	294	1	10	412	19	36	484	26	33	23.367			

II. CHOICES OF LANGUAGES

Choices of foreign languages

The three tables below give details of European School pupils' choices of language for study.

Language 2 is a pupil's first foreign language, which is studied from primary year 1 and is taken up to Baccalaureate level. It is the medium of instruction in a number of subjects in secondary school. Language 3 is a compulsory subject in secondary years 2 to 5 and may be taken up to Baccalaureate level. Language 4 is optional and may be studied from secondary year 4. (Some schools also offer a Language 5 which pupils may take at beginner level as a complementary course forming part of the curriculum of secondary years 6 and 7).

Table LANG 2 shows the percentage of pupils choosing English, French and German as Language 2 in the current year. Pupils' range of choices of Language 2 is confined to English, French and German up to secondary year 5. In years 6 and 7, although one of these three languages must be the language of tuition for the study of certain subjects, the choice of a different Language 2 may be possible, conditional upon proven knowledge of the language in question. This is the most often the language of the school's host country.

Table LANG 2: Choice of Language 2, 2011-2012 school year

Schools	German	English	French	Other (as from secondary year 6)
Alicante	11,29 %	68,12 %	15,12 %	5,46 %
Bergen	9,45 %	67,99 %	20,43 %	2,13 %
Brussels I	5,65 %	62,86 %	31,49 %	
Brussels II	4,92 %	60,15 %	34,82 %	0,12 %
Brussels III	6,15 %	55,32 %	38,07 %	0,46 %
Brussels IV	5,88 %	67,91 %	26,20 %	
Culham	8,46 %	68,76 %	22,78 %	
Frankfurt	49,54 %	46,81 %	3,64 %	
Karlsruhe	48,30 %	40,19 %	11,51 %	
Luxembourg I	13,75 %	56,79 %	29,45 %	
Luxembourg II				
Mol	6,64 %	57,96 %	35,40 %	
Munich	46,97 %	45,78 %	7,25 %	
Varese	10,97 %	70,23 %	18,11 %	0,69 %
Total	17,53%	59,14%	22,63%	

English clearly continues to be by far the most popular choice for Language 2, except in the schools in Germany, where German is chosen by approximately half of the pupils enrolled in a language section other than the German section, or enrolled in the latter section as SWALS.

Tables LANG 3a and LANG 4a show the most popular choices, in each school, of languages for study of Language 3 and Language 4 respectively.

Table LANG 3a: The three most frequently chosen languages in each School as Language 3 on entry into secondary year 2, 2011-2012 school year

Schools	Choice 1		Choice 2		Choice 3	
	Language	%	Language	%	Language	%
Alicante	French	38,82%	German	25,88%	Spanish	20,00%
Bergen	Dutch	31,37%	Spanish	29,41%	French	23,53%
Brussels I	English	27,05%	Spanish	23,77%	French	19,67%
Brussels II	French	33,48%	English	26,09%	Spanish	16,09%
Brussels III	English	28,70%	French	20,00%	Spanish	20,00%
Brussels IV	Spanish	34,44%	French	22,22%	Dutch	18,89%
Culham	Spanish	49,33%	French	24,00%	Italian	13,33%
Frankfurt	Spanish	40,54%	English	35,14%	French	14,86%
Karlsruhe	Spanish	32,89%	English	31,58%	French	27,63%
Luxembourg I	English	32,94%	French	24,71%	German	23,82%
Luxembourg II						
Mol	Spanish	41,79%	French	17,91%	Dutch	14,93%
Munich	English	44,51%	French	26,22%	Spanish	12,80%
Varese	Italian	26,09%	French	25,00%	Spanish	25,00%

Table LANG 4a: The three most frequently chosen languages in each School as Language 4 on entry into secondary year 4, 2011-2012 school year

Schools	Choice 1		Choice 2		Choice 3	
	Language	%	Language	%	Language	%
Alicante	Italian	42,22%	German	40,00%	French	17,78%
Bergen	Spanish	52,38%	Italian	47,62%		
Brussels I	Spanish	42,75%	German	24,64%	Italian	16,67%
Brussels II	Spanish	41,60%	Dutch	18,40%	Italian	12,80%
Brussels III	Spanish	43,55%	Dutch	26,61%	Italian	16,13%
Brussels IV						
Culham						
Frankfurt	Spanish	76,19%	French	23,81%		
Karlsruhe	Spanish	61,76%	Italian	20,59%	French	17,65%
Luxembourg I	Spanish	44,80%	German	24,80%	Italian	13,60%
Luxembourg II						
Mol	Spanish	51,72%	German	34,48%	Italian	13,79%
Munich	Spanish	56,52%	French	43,48%		
Varese	Spanish	30,00%	German	30,00%	Italian	22,50%

It would appear that those pupils who have not chosen English as Language 2 tend to do so at Language 3 level. However, by far the most popular choice as Language 3 or Language 4 is Spanish – which is not available as Language 2.

III. DEVELOPMENT OF STAFF

Table ENS 1 – Seconded staff

Table ENS1 shows the number of seconded staff in each school, i.e. the number of teachers, educational advisers, librarians and executive staff (Directors and Deputy Directors) seconded by the Member States for the 2011-2012 school year.

School	Nursery	Primary	Secondary			Executive Staff	TOTAL
			Teachers	Advisers	Librarians		
Alicante	5	21	49	3	0	3	81
Bergen	2	12	27	1	0	3	45
Brussels I	6	61	116	10	1	3	197
Brussels II	11	62	125	8	0	3	209
Brussels III	7	47	112	9	0	3	178
Brussels IV	7	28	9	1	0	3	48
Culham	0	12	29	2	0	3	46
Frankfurt	5	20	40	3	0	3	71
Karlsruhe	3	17	43	3	0	3	69
Luxembourg I	9	53	150	12	3	4	231
Luxembourg II	10	40	0	0	0	2	52
Mol	3	14	42	3	1	3	66
Munich	2	33	63	5	0	3	106
Varese	5	30	64	5	1	3	108
GRAND TOTALS	TOTAL NURSERY	TOTAL PRIMARY	TOTAL SECONDARY			TOTAL EXECUTIVE STAFF	TOTAL
			Teachers	Advisers	Librarians		
	75	450	869	65	6	42	1507

If the seconded staff of the Office of the Secretary-General of the European Schools (**7**) and the Bursars of the European Schools (**11**) are added, the total number of seconded staff is **1525**.

Table ENS 1a – Seconded teaching staff

Table ENS 1a shows the number of members of the teaching staff seconded by each Member State in the system as a whole and in each school for the 2011-2012 school year. It also shows the percentage of the total seconded teaching staff from each Member State.

Countries	Total	%	Ali	Berg	Br1	Br2	Br3	Br4	Cul	Frf	Kar	Lu1	Lu2	Mol	Mun	Var
Germany	229	16,42%	15	2	16	20	15	7	14	20	26	24	6	11	35	18
Austria	20	1,43%			5	1	1	1		3		3			5	1
Belgium	175	12,55%	10	7	21	33	27	10		5	2	25	8	14	5	8
Bulgaria	1	0,07%			1											
Denmark	31	2,22%			14				1			8	6		1	1
Spain	77	5,52%	18	1	15	2	16		1	2	1	14		1	3	3
Estonia	3	0,21%				2						1				
Finland	30	2,15%				18						11			1	
France	182	13,05%	5	5	31	24	25	7	8	7	12	25	4	9	8	12
UK	233	16,58%	13	7	29	29	25	6	11	14	15	32	6	8	17	21
Greece	36	2,58%					22					7	4		3	
Hungary	13	0,93%			10								3			
Ireland	57	4,08%	5	2	8	8	7	3	3	3	2	6	1	2	2	5
Italy	100	7,17%	2		16	13	3	8	1	11	2	8	6	1	10	19
Latvia	1	0,07%				1										
Lithuania	7	0,50%				5						2				
Luxembourg	17	1,21%	4			2	3					4	1		2	1
Malta	2	0,14%			1								1			
Netherlands	75	5,38%		16		10	9	2	2		3	10		11	5	7
Poland	22	1,57%			14							7			1	
Portugal	29	2,08%	1			13	1					12				2
Slovakia	4	0,28%					3						1			
Slovenia	2	0,14%			2											
Sweden	35	2,51%	2	1		17						12		2		1
Czech Republic	13	0,93%					9					1	3			
TOTAL	1394	100,00%	75	41	183	198	166	44	41	65	63	212	50	59	98	99

At the beginning of the 2011-2012 school year in September 2011, the number of seconded teachers' posts remaining unfilled by the Member States was 88 (21 in the nursery and primary – 67 in the secondary) – a total of 24 posts more than the previous school year (1 less in the nursery, 1 more in the primary and 23 more in the secondary). Of these 88 posts, 38 are Anglophone posts and 24 are Francophone posts.

In response to the UK's comments about the imbalance between the percentage of UK pupils and that of seconded teachers of the same nationality, at its April 2008 meeting in Helsinki, the Board of Governors adopted general principles to determine fair cost sharing amongst the Member States based on proportionality for each Member State between the total number of seconded posts required and the percentage of their nationals in the schools.

On the basis of the total number of seconded posts required, a maximum theoretical threshold was determined for each Member State with reference to the percentage of pupils who are nationals of the country in question.

A structural approach was adopted whereby Member States which so wish are allowed to second teachers to teach as non-native speakers in a given language, in certain cases and subject to prior checking of their linguistic competence. Criteria for carrying out this check prior to appointment were approved by the Board of Governors in January 2009.

After three years, it is to be noted that few Member States are prepared to fill posts requiring teachers to teach in a language other than own language(s).

At the beginning of the 2011-2012 school year, only two Member States had seconded one teacher each, one to teach English Language 2, the other to teach mathematics in English.

Another Member State had expressed an interest in filling a post of Educational Adviser for the 2011-2012 school year. In the end the post was not filled.

For the 2012-2013 school year, 11 posts for subjects taught in DE, EN or FR (Physical Education, Music, Art) might be filled by non-native speakers, as might two posts of educational adviser.

These figures do not take account of the following subjects, which might also be taken into consideration: in accordance with the provisions of the document on the checking of linguistic competence: Foreign languages (L2, 3, 4), Human sciences (history and geography), Economics, Mathematics, Science subjects.

Table ENS2: Development of locally recruited teachers – 2008-2011

Table ENS2 gives for each year since 2008 a number of locally recruited teachers for each school. This number corresponds to full-time teacher equivalents, i.e. with a teaching load of 21 weekly periods in the secondary and 25.5 weekly hours in the primary.

Schools	2008	2009	2010	2011	Difference between 2008 and 2011	
	Locally recruited teachers	Locally recruited teachers	Locally recruited teachers	Locally recruited teachers	Locally recruited teachers	%
Alicante	19	24	22	22	3	15,79%
Bergen	18	20	21	20	2	11,11%
Brussels I	76	77	72	56	-20	-26,31%
Brussels II	49	54	46	56	7	14,28%
Brussels III	48	60	66	56	8	16,66%
Brussels IV	10	14	22	20	10	
Culham	27	30	28	26	-1	-3,70%
Frankfurt	35	35	46	37	2	5,71%
Karlsruhe	34	38	35	33	-1	-2,94%
Luxembourg I	82	97	83	72	-10	-12,19%
Luxembourg II	13	12	11	13	0	0,00%
Mol	19	15	13	13	-6	-31,58%
Munich	62	73	70	64	2	3,22%
Varese	50	49	43	43	-7	-14,00%
Total	542	598	578	531	-11	-2,03%

Attention should be drawn to the significant fall in the number of locally recruited teachers between 2010 and 2011: 47 full-time equivalent posts, or 8.13%, despite the rise in the number of posts remaining unfilled and in the total number of pupils on roll in the schools as a whole. If the 11 fewer seconded teachers' posts compared with last year are added to this figure of 47, the overall fall amounts to 58 full-time posts.

This results from application of the April 2011 decisions of the Board of Governors concerning the rules for creation of classes and groups (Document 2011-01-D-33-7), which were taken against the background of the budgetary constraints associated with the current economic crisis.

Table ENS 2a: Seconded staff and locally recruited teachers (full-time equivalent) for the 2011-2012 school year

	Seconded teachers	Ed. Advisers/ Librarians	Executive staff	Total Seconded staff		Locally recruited teachers	Locally recruited teachers	Loc. recr. teachers Religion and Ethics	Total Locally recruited teachers		Total
						Primary	Secondary				
Alicante	75	3	3	81	79%	10	9	3	22	21%	103
Bergen	41	1	3	45	69%	6	12	2	20	31%	65
Brussels I	183	11	3	197	78%	17	30	9	56	22%	253
Brussels II	198	8	3	209	79%	18	28	10	56	21%	265
Brussels III	166	9	3	178	76%	17	29	10	56	24%	234
Brussels IV	44	1	3	48	71%	9	8	3	20	29%	68
Culham	41	2	3	46	64%	6	18	2	26	36%	72
Frankfurt	65	3	3	71	66%	15	17	5	37	34%	108
Karlsruhe	63	3	3	69	68%	9	21	3	33	32%	102
Luxembourg I	212	15	4	231	76%	16	46	10	72	24%	303
Luxembourg II	50	0	2	52	80%	11	0	2	13	20%	65
Mol	59	4	3	66	84%	5	6	2	13	16%	79
Munich	98	5	3	106	62%	28	31	5	64	38%	170
Varese	99	6	3	108	72%	20	18	5	43	28%	151
Total	1394	71	42	1507	74%	187	273	71	531	26%	2038

Table ENS2a shows the total number of seconded staff in each school, i.e. the number of teachers, educational advisers, librarians and executive staff (Directors and Deputy Directors) seconded by the Member States for the 2011-2012 school year.

The table also gives a figure for the number of locally recruited teachers for each school. This number corresponds to the number mentioned in table ENS2. However, it also gives a breakdown of primary and secondary locally recruited teachers and of religion/ethics locally recruited teachers.

Table ENS 3 – Pupil to Educational Adviser ratio

Table ENS3 gives information about the pupil to educational adviser ratio in the secondary schools.

	2008		2009		2010		2011	
	Ed. advisers	Pupils-Ed.adv. ratio	Ed. adv.	Pupil-Ed.adv. ratio	Ed. adv.	Pupil-ed.adv. Ratio	Ed. adv.	Pupil-Ed.adv. Ratio
Alicante	3	182	3	183	3	186	3	183
Bergen	2	155	2	156	2	162	1	322
Brussels I	10	168	10	176	10	174	10	180
Brussels II	9	187	9	187	9	184	8	211
Brussels III	9	179	9	184	9	189	9	192
Brussels IV	0	0	0	0	0	0	1	452
Culham	2	230	2	237	2	241	2	226
Frankfurt	2	247	3	178	3	175	3	181
Karlsruhe	3	192	3	188	2	270	3	174
Luxembourg I	12	184	13	170	13	172	12	189
Luxembourg II								
Mol	2	216	2	224	3	156	3	150
Munich	4	221	4	233	5	190	5	200
Varese	5	143	4	177	5	143	5	143
Total	63	184	64	185	66	181	65	188

Tableau PAS 1 – Administrative and ancillary staff

Table PAS 1 shows the number of posts of administrative and ancillary staff in each school and at the Office of the Secretary-General for the years 2009 to 2012 according to the organigrams appearing in the budgets. It also shows the percentage difference between the number of such staff members at the beginning and end of that period.

Table PAS 1: Number of posts of administrative and ancillary staff from 2009 to 2012 according to the organigrams appearing in the budgets					
Schools	2009	2010	2011	2012	Diff. 2009-2012 (%)
Alicante	18,00	19,50	19,50	19,50	8,33
Bergen	14,50	14,50	14,50	14,50	0,00
Brussels I	37,95	37,45	37,45	35,95	-5,27
Brussels II	36,50	36,00	38,00	41,00	12,33
Brussels III	31,50	28,25	35,75	38,75	23,02
Brussels IV	14,50	16,50	18,00	22,50	55,17
Culham	16,50	16,50	16,50	13,50	-18,18
Frankfurt	18,00	18,50	19,00	19,00	5,56
Karlsruhe	17,80	19,10	19,10	21,90	23,03
<u>Luxembourg:</u>	<i>59,50</i>	<i>63,50</i>	<i>65,50</i>	<i>64,50</i>	8,40
Luxembourg I	40,00	43,00	44,00	43,00	7,50
Luxembourg II	19,50	20,50	21,50	21,50	10,26
Mol	15,00	15,00	15,00	15,50	3,33
Munich	28,00	30,00	30,00	30,50	8,93
Varese	23,43	23,47	23,47	23,43	0,00
OSGES	35,50	37,50	37,50	38,50	8,45
TOTAL	366,68	375,77	389,27	399,03	8,82

Posts of nursery assistant are included in this table (**2009: 59.5 – 2010: 70.25 – 2011: 73.25 – 2012: 70.25**). The year on year variations in the number of AAS posts are due largely to posts of nursery assistant, which are created or discontinued according to the number of pupils in the nursery classes, in accordance with the relevant decisions of the Board of Governors.

There are also **44.04** posts of auxiliary staff in the schools to be taken into account. Those posts are not included in the above table.

IV. 2011 BACCALAUREATE RESULTS

A total of 1481 candidates from 12 European Schools and one Accredited Schools (*Scuola per l'Europa di Parma*) were entered for the 52nd session of the European Baccalaureate, the Examining Board for which was chaired by Prof. Anna Tirpáková (SK). Of that number, 1476 candidates actually took the examinations, five students having given up their studies in mid-year.

The overall pass rate for the 2011 Baccalaureate 2011 was 98.24%.

Pass rate 2077-2011

Taux de réussite 2007-2011



	2007	2008	2009	2010	2011
AL	100.00%	100.00%	100.00%	100.00%	100.00%
BE	97.78%	95.56%	97.92%	97.87%	89.36%
BR I	99.40%	96.81%	97.14%	99.04%	99.07%
BR II	98.55%	98.63%	97.81%	99.55%	98.10%
BR III	96.95%	95.17%	95.89%	99.49%	96.92%
CU	100.00%	100.00%	100.00%	98.25%	96.30%
FR	100.00%	100.00%	100.00%	100.00%	100.00%
KA	96.30%	96.10%	100.00%	95.89%	97.53%
LU	98.27%	96.58%	98.15%	97.33%	99.23%
MO	96.43%	100.00%	96.55%	100.00%	95.38%
MU	97.85%	98.88%	99.08%	96.72%	100.00%
PA			100.00%	100.00%	100.00%
VA	97.89%	100.00%	98.90%	98.97%	100.00%

The following table shows the pass rate percentage in the different language sections.

The pass rate by language section this year ranged between 88.9% and 100%.

Pass rate by section, 2011Baccalaureate

Pass rate	DA	DE	EL	EN	ES	FI	FR	HU	IT	NL	PL	PT	SV
2011	100	98.30	100	98.30	98.80	100	97.60	88.90	99.20	97.30	100	97.40	100

The following table shows the pass rate percentage in the different schools. The pass rate ranges between 89.4% and 100 %.

Pass rate by school, 2011 Baccalaureate

Pass rate	AL	BE	Br I	Br II	Br III	CU	FR	KA	LU	MO	MU	PA	VA
2011	100	89.4	99.1	98.1	96.9	96.3	100	97.5	99.2	95.4	100	100	100

Taking all the candidates who participated in the 2011 Baccalaureate session, the average final mark was 76.81%. Comparison of the average final marks shows that they have remained comparatively stable over the last five years.

Average final mark – 2007-2011 Baccalaureate

Year	2007	2008	2009	2010	2011
FM	76.80	75.60	76.50	76.90	76.81

The final marks range between 73.9 and 80.76 according to the schools.

School	AL	BE	BR I	Br II	BR III	CU	FR	KA	LU	MO	MU	PA	VA
FM	80.13	75.62	76.57	76.69	75.91	80.76	80.73	76.35	77.74	73.19	77.47	78.21	77.85

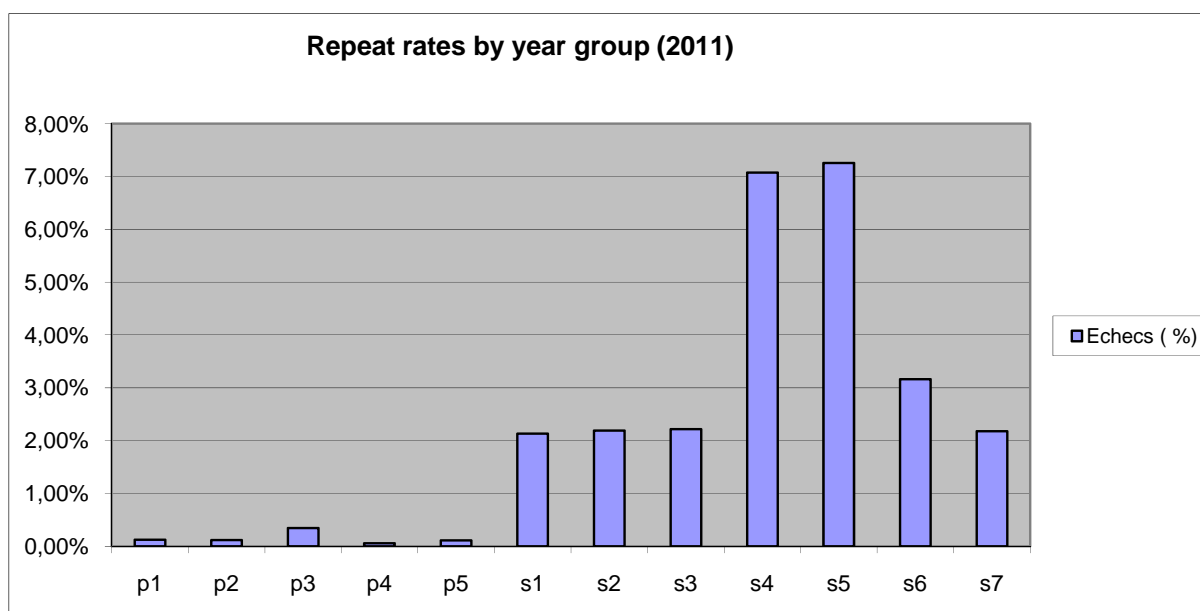
The average final marks of the different language sections range between 73.84 and 82.63.

LS	da	de	el	en	es	fi	fr	hu	it	nl	pl	pt	sv
FM	78.09	77.93	79.94	78.15	77.03	80.40	74.60	73.84	77.23	74.20	76.86	73.91	82.63

V. REPEAT RATES IN 2011

In 2010-2011, 20,439 primary and secondary pupils received a final school report at the end of the school year. The table below shows the total number of pupils by year group for all 14 schools, the numbers of pupils repeating a year in relation to that total number and the repeat rate in percentage terms which that represents for each year group.

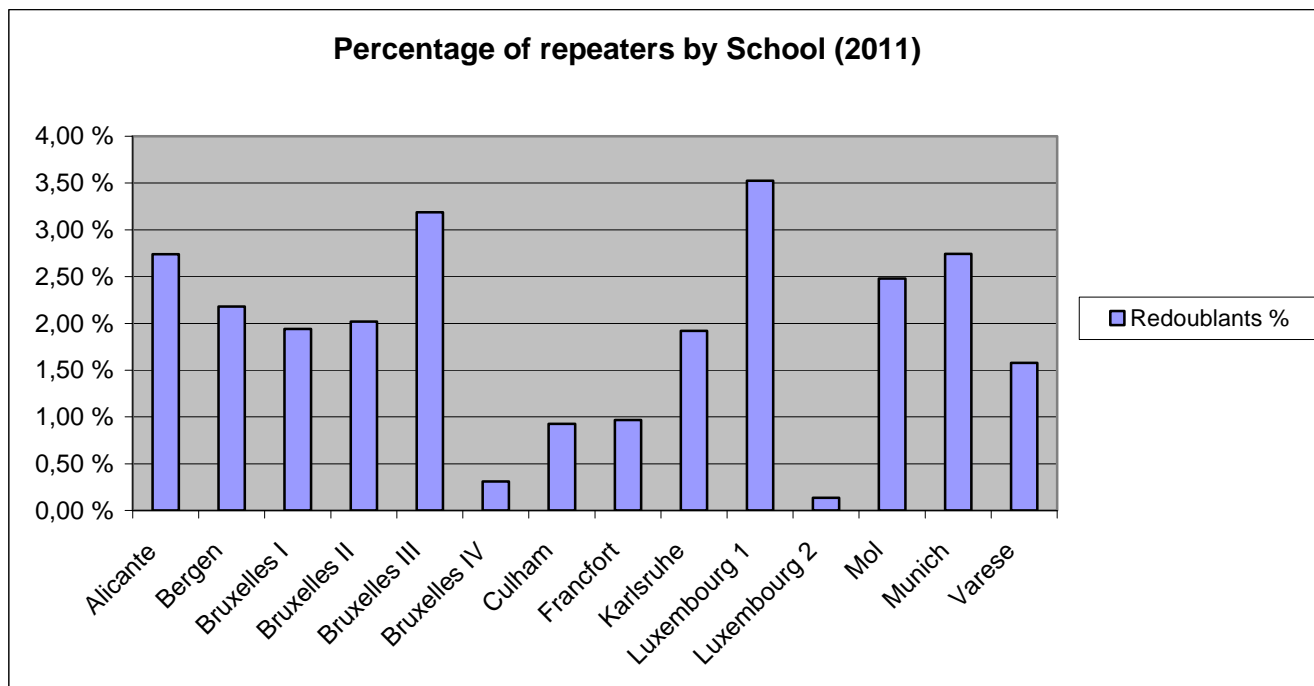
Year	Pupils	Repeaters	Repeat rates
p1	1,606	2	0.12 %
p2	1,672	2	0.12 %
p3	1,723	6	0.35 %
p4	1,739	1	0.06 %
p5	1,775	2	0.11 %
s1	1,785	38	2.13 %
s2	1,828	40	2.19 %
s3	1,806	40	2.21 %
s4	1,851	131	7.08 %
s5	1,667	121	7.26 %
s6	1,518	48	3.16 %
s7	1,469	32	2.18 %
TOTAL	20,439	463	2.27 %



In the light of the above figures, it can be observed that the average repeat rate for the 2010-2011 school year stands at approximately 2.3% (463 pupils). The rate for the 2009-2010 school year was 2.7%, meaning that the number of pupils having to repeat a year in 2010-2011 is down by around 0.4% on the previous year.

As usual, the repeat rate is highest in secondary years 4 and 5. This phenomenon is analysed and examined in the document (2011-09-D-50-en-3): 'Follow-up on the report on the analysis of repeat rates and external evaluation of competences acquired by pupils of the European Schools system'.

The table below shows in percentage terms the average repeat rate for each school as a whole, all sections taken together, for the primary and secondary levels.



It is to be observed that for 2010-2011, the average repeat rate per school ranges between 0.14% and 3.53%. In 2009-2010, the rate ranged between 0.13% and 5.29%.

The table below shows firstly, the number of repeaters in relation to the total number of pupils in the secondary cycle and secondly, the number of repeaters who left the European Schools system and the percentage for which that number accounts in relation to the total number of pupils.

Secondary	Total number of pupils by year group (secondary cycle)	Repeaters	Repeaters who left the European Schools	Percentage of repeaters who left the European Schools
s1	1,785	38	12	0.67%
s2	1,828	40	10	0.55%
s3	1,806	40	11	0.61%
s4	1,851	131	37	2.00%
s5	1,667	121	35	2.10%
s6	1,518	48	12	0.79%
s7	1,469	32	9	0.61%
Total	11,924	450	126	1.06%

Of the 450 repeaters in the secondary school, 126 left the European Schools system. Those data are in the process of being studied.

As announced in document 2010-D-245-en-5, at its October 2009 meeting, the Joint Teaching Committee adopted 19 measures designed to combat the need for pupils to repeat a year. The Schools were only able to implement those measures as from the 2010-2011 school year.

A follow-up report on their implementation was presented to Board of Governors at its December 2011 meeting entitled 'Follow-up on the report on the analysis of repeat rates and external evaluation of competences acquired by pupils of the European Schools system' (2011-09-D-50-en-3). On the basis of that report, the Board of Governors mandated the Secretary-General, amongst other things, to contact organisations which conduct large-scale comparative studies of educational achievement and to study with them the feasibility of conducting a study of that kind to assess the performances of the pupils of the European Schools.